



**Gateley Road, Brixton, SW9**

2 bedroom flat - conversion for sale

**£650,000**

Share of Freehold

## Property Details

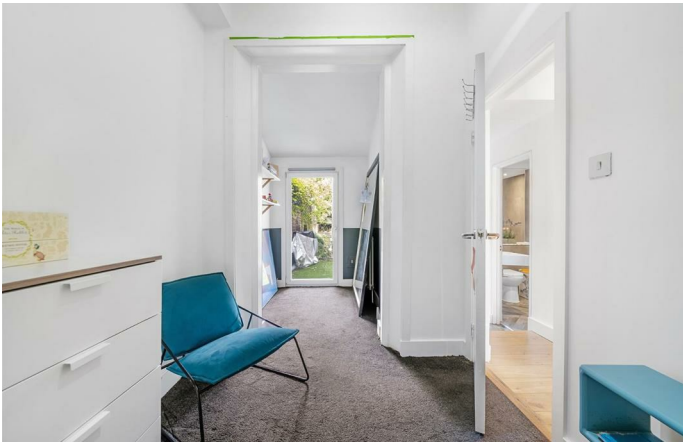
A beautiful two double bedroom garden flat with unique features on a popular Victorian street. Sure to wow guests, the open plan living room has plenty of space to relax, dine and socialise, with poured concrete floors and multiple floor-to-ceiling glass doors out to the garden, bathing the space in natural light. A contemporary kitchen boasts generous storage within steel and black cabinets with worktop lighting, a pleasant place to cook. Bi-fold doors from the lounge allow a seamless transition out to a pretty, low-maintenance garden with a large wrap-around patio, raised deck seating and planters. Unwind under your very own palm tree or host BBQs. The bedroom to the front is a beautiful space with a large bay window with shutters and the proportions for generous wardrobes. The second bedroom boasts a door to the garden, with a handy nook, ideal as a dressing or reading area. The bathroom is also stunning, with a bath plus overhead rain shower, luxurious tiling and a large mirror. The home has great storage in the entrance hall and also in the cellar.

## Features

- Two double bedrooms
- Private garden
- Victorian conversion
- Over 700 internal square feet
- Central Brixton a three-minute stroll
- Walking distance to Brixton, Clapham and Stockwell High Streets
- Access to the Victoria and Northern tube lines
- Share of freehold
- Chain-free

Council tax band C    EPC rating (0)

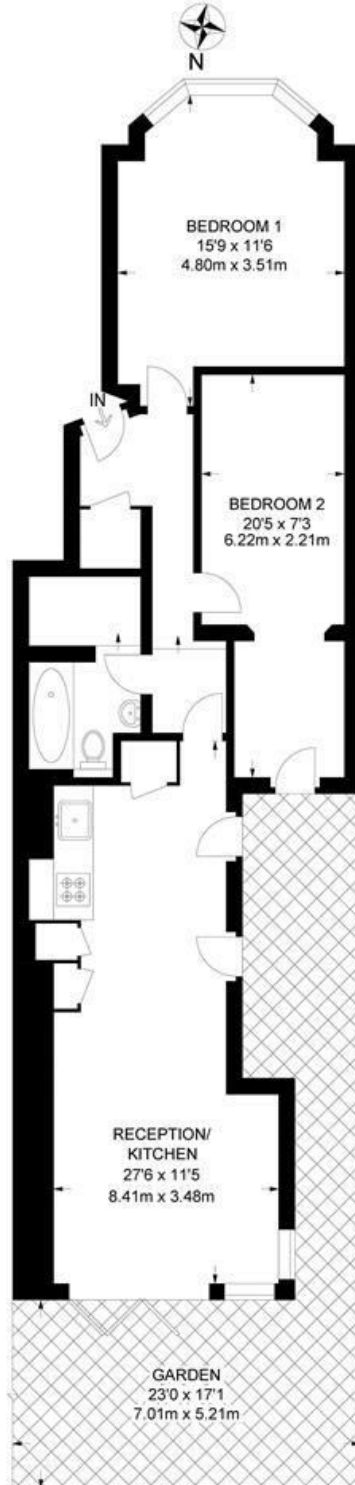




Gateley Road, Brixton, SW9

**Gateley Road, SW9**  
**2 Bedroom Flat**

APPROXIMATE GROSS INTERNAL AREA: **724 SQ FT / 67.3 SQ M**



**GROUND FLOOR**



While we try our very best, floor plans are produced as a guide only and we take no responsibility for the precise accuracy with which any property is represented.

Gateley Road, Brixton, SW9

