**Coldharbour Lane, Brixton, SW9**

1 bedroom flat to let

£404 Per Week

Furnished

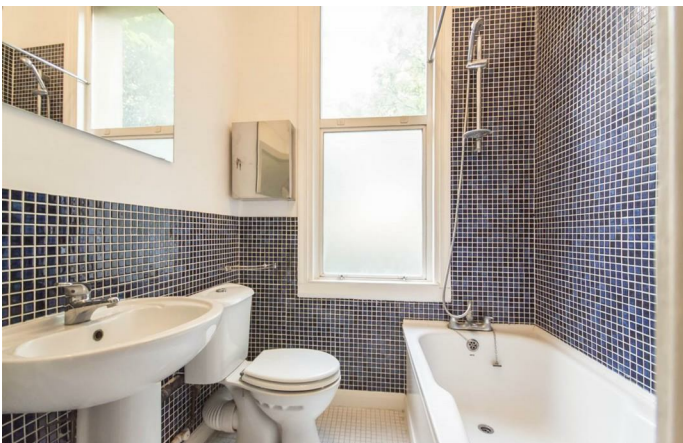
Property Details

A beautiful and very large one bedroom, first floor flat in a grand, early Victorian town house, set back from the road. The property is ideally located as it is only a short walk to Brixton Village and Brixton town centre as well as being close to both the tube station and the train station. The flat has a very large reception with a huge floor-to-ceiling window, a separate kitchen with brand new appliances, a double bedroom at the back of the property and a good sized, well appointed bathroom. There are wooden floors throughout, as well as lots of storage and off street parking.

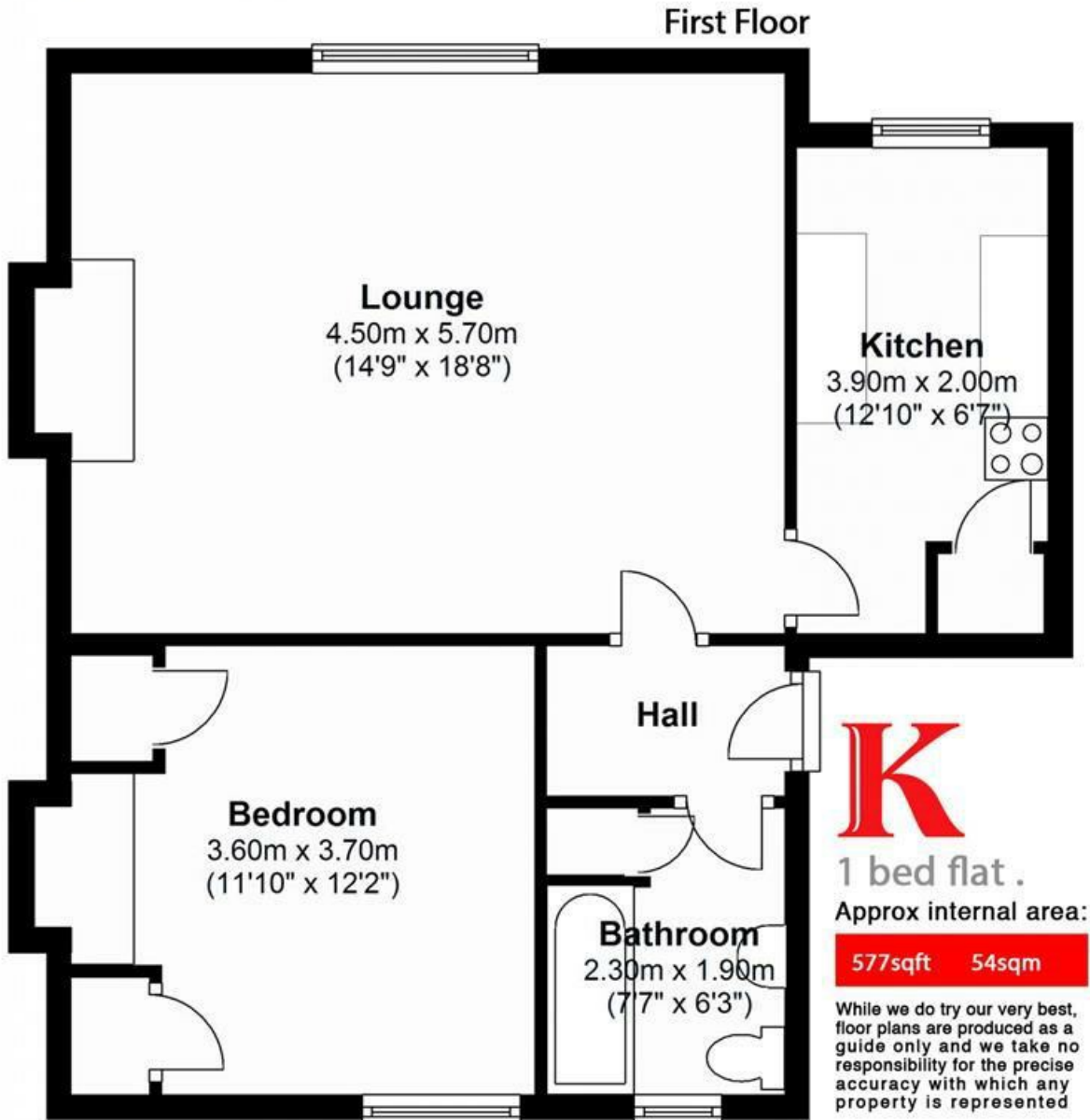
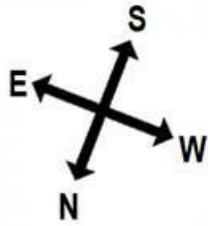
Features

- One double bedroom
- Family bathroom
- Separate reception area and kitchen
- Characterful features
- Central location
- Close to transport links
- Off-street parking
- Available from the 8th of June

Council tax band C EPC rating D (68)



Coldharbour Lane, Brixton, SW9



Coldharbour Lane

Coldharbour Lane, Brixton, SW9

