



## Belvedere Place, Brixton, SW2

2 bedroom flat - purpose built for sale

£550,000

Leasehold

### Property Details

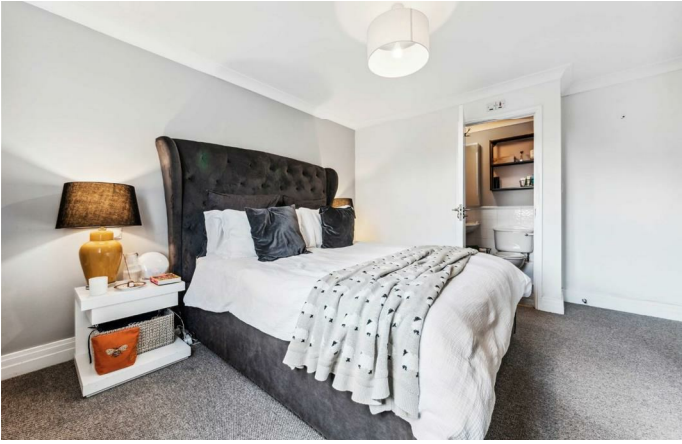
A bright two bedroom, two bathroom flat with a Juliet balcony and gardens, within a sought-after, gated mews. This apartment has multiple perks, with a peaceful and private setting over the second floor and access to the loft space for storage. The L-shaped open-plan living space provides the ideal room to relax, unwind, dine and entertain, complete with an attractive Juliet balcony. The room offers brilliant dimensions for a large dining table as well as a lounge area, feeding through to a well-equipped modern kitchen, maximising the space on offer with generous storage options and plenty of surface space. The principal bedroom has generous proportions, plenty of space for storage plus an en-suite shower room. The second bedroom is rentable double, a versatile room easily repurposed to suit needs. The main bathroom has a bath with overhead shower and there is further storage in two hallway cupboards. The cherry on the cake is the beautifully maintained shared gardens, complete with a built in BBQ and picnic benches, plus bike storage by arrangement and an unrivalled location.

### Features

- Two double bedrooms
- Two bathrooms
- Juliet balcony & shared gardens
- Secure gated mews development
- 700 square feet of internal space
- Ample storage with loft access
- Secure bike storage
- Quiet location, close to the action
- Amenities of Acre lane and Brixton
- Victoria and Northern lines

Council tax band D    EPC rating C (79)





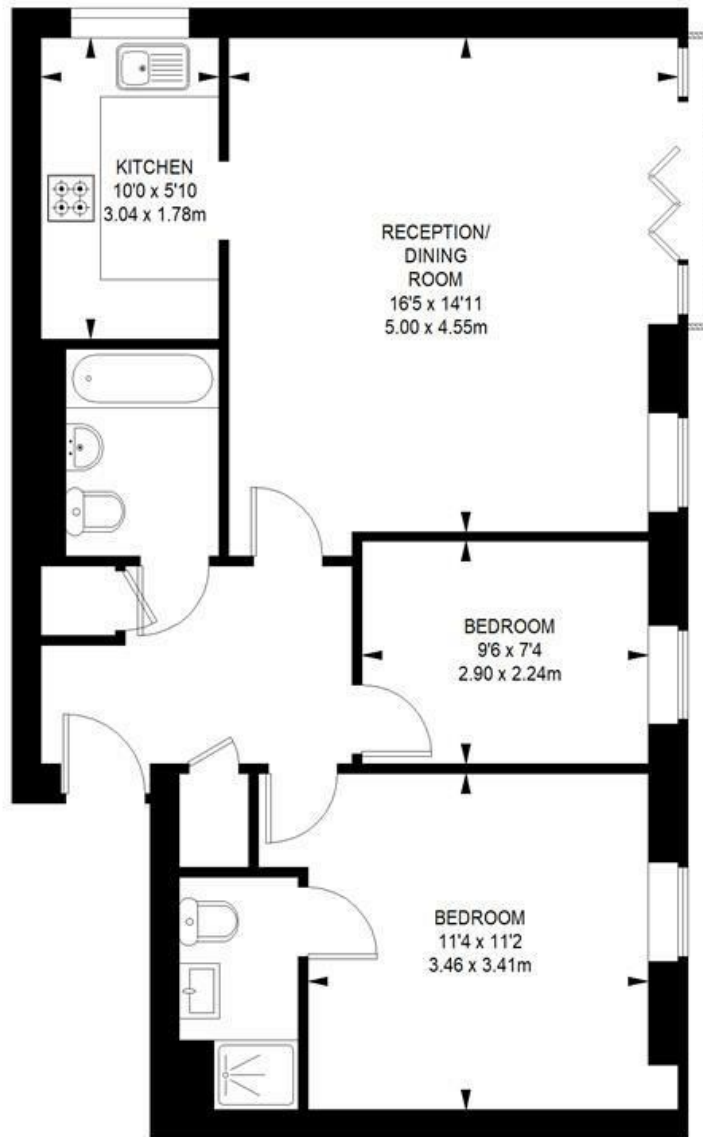
Belvedere Place, Brixton, SW2

## Belvedere Place, SW2

### 2 bedroom flat

APPROXIMATE GROSS INTERNAL AREA :

700 SQ FT / 65 SQM



SECOND FLOOR



While we try our very best, floor plans are produced as a guide only and we take no responsibility for the precise accuracy with which any property is represented.

Belvedere Place, Brixton, SW2

