



35 Fortrose Gardens, Streatham Hill, SW2

4 bedroom flat - purpose built to let

£600 Per Week

Not specified

Property Details

A wonderful four bedroom split level flat with private balcony located within a short walk from Streatham Hill and bus ride away from Central Brixton. The flat comes complete with a spacious reception room that seamlessly flows out onto your own balcony, a separate and spacious kitchen with plenty of work top space, family bathroom and four bedrooms. The property is a 12 minute walk to Streatham Hill, 10 minute bus trip to Clapham South or 10 minute bus trip to Brixton. Clapham and Brixton have a wide range of different bars, pubs, restaurants and transport links so you'll never go short of choice.

Features

- Four double bedrooms
- Split level
- Spacious reception room
- Close to Transport links
- Private balcony
- Available asap

Council tax band C EPC rating E (53)



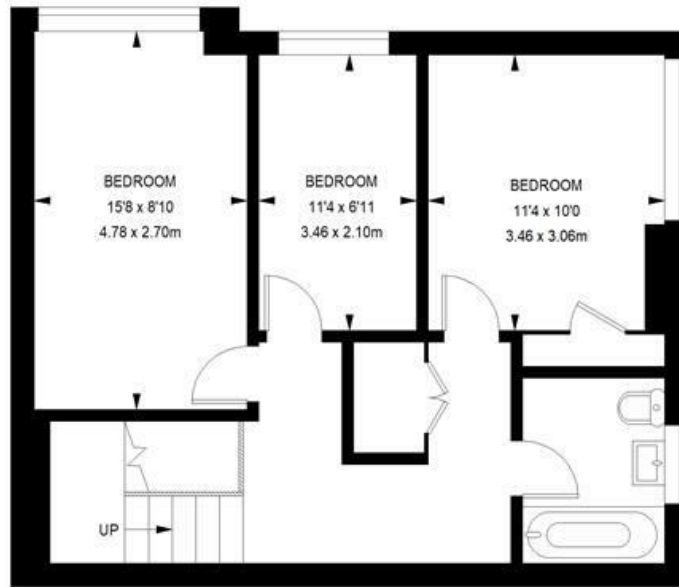


Fortrose Gardens, SW2

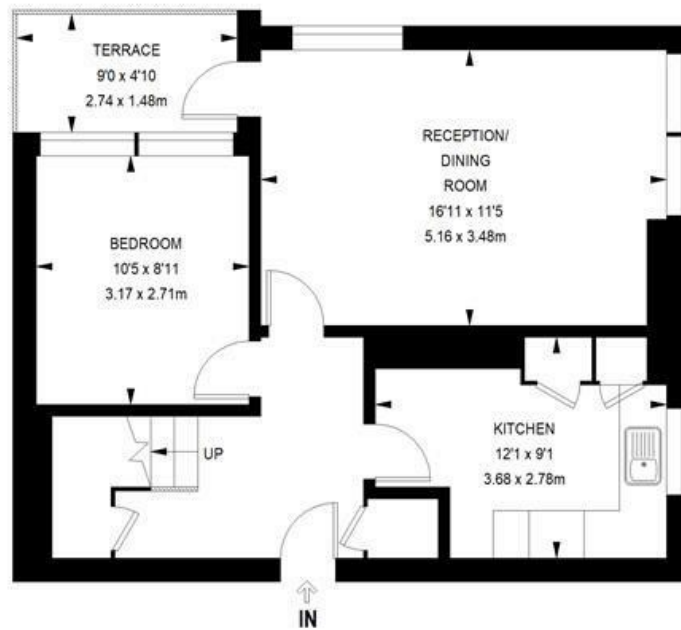
4 bedroom flat

APPROXIMATE GROSS INTERNAL AREA :

1062 SQ FT / 98.66 SQ M



SECOND FLOOR



FIRST FLOOR



While we try our very best, floor plans are produced as a guide only and we take no responsibility for the precise accuracy with which any property is represented.

35 Fortrose Gardens, Streatham Hill, SW2

