



Arlingford Road, Brixton, SW2

1 bedroom flat for sale

Leasehold

Property Details

A beautiful one double bedroom garden flat, in an end-of-terrace Victorian conversion on the popular Arlingford Road. Boasting a mix of characterful features and contemporary design, the apartment has an efficient layout, maximising space to create a spacious, bright feel. The reception room is well-proportioned, with high ceilings and wooden flooring adding to the homely ambience. French doors lead out to the private garden. Predominantly South-facing, the wrap-around garden is paved into an attractive stone terrace for a low-maintenance finish, ideal for getting the most out of the summer with al-fresco hosting. Ideal for bikes, there is private side access onto the street, plus the perk of a gate into Brockwell Park a two-minute stroll away, providing a second outdoor haven. Back inside, the living space flows effortlessly onto a stylish eat-in kitchen, with solid wood worktops and ample storage, finished with a butler sink and plenty of room for a dining table. The double bedroom is nestled behind a large bay window, with generous proportions for storage. The modern shower room features a large rain shower and integrated storage. A cupboard off the reception is ideal for hiding away essential items not used on a daily basis.

Council tax band C EPC rating D (55)

Features

- One double bedroom
- Private South-facing wrap-around garden
- Victorian end-of-terrace conversion
- Bright and airy throughout
- Sought after street with an entrance onto Brockwell Park
- Local amenities on the doorstep
- Central Brixton and Herne Hill a ten-minute stroll
- Victoria Line, Overground and Thameslink
- Chain-free

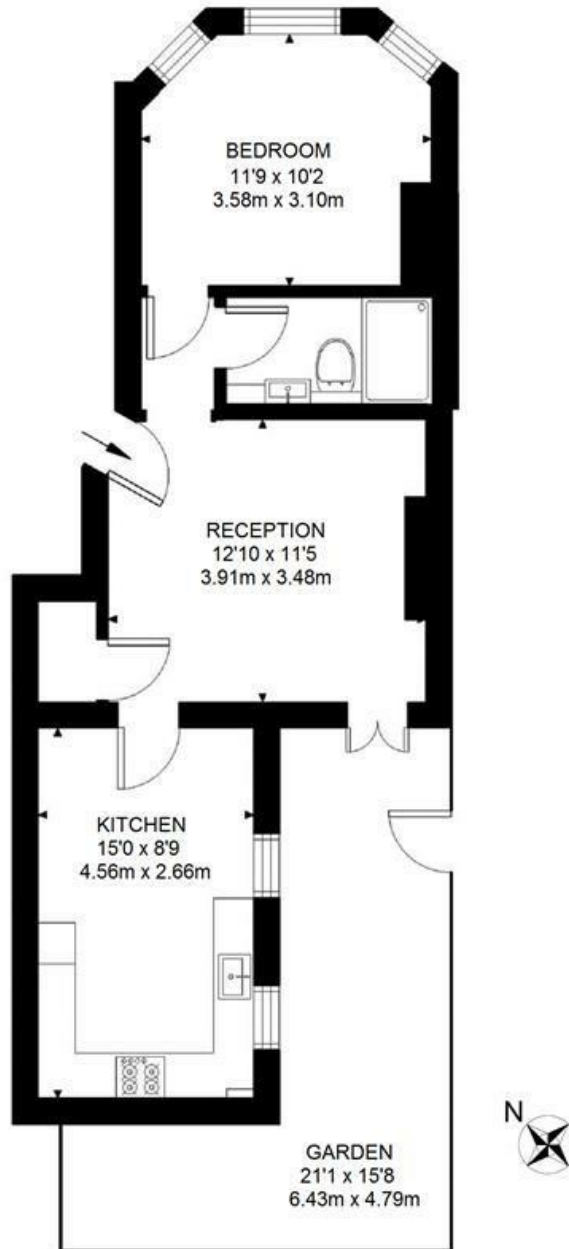


Arlingford Road, Brixton, SW2

Arlingford Road, SW2

2 Bedroom Flat

APPROXIMATE GROSS INTERNAL AREA: **473 SQ FT / 44 SQ M**



GROUND FLOOR



While we try our very best, floor plans are produced as a guide only and we take no responsibility for the precise accuracy with which any property is represented.

Arlingford Road, Brixton, SW2

