**Barnwell Road, London, SW2****£550,000**

2 bedroom flat for sale

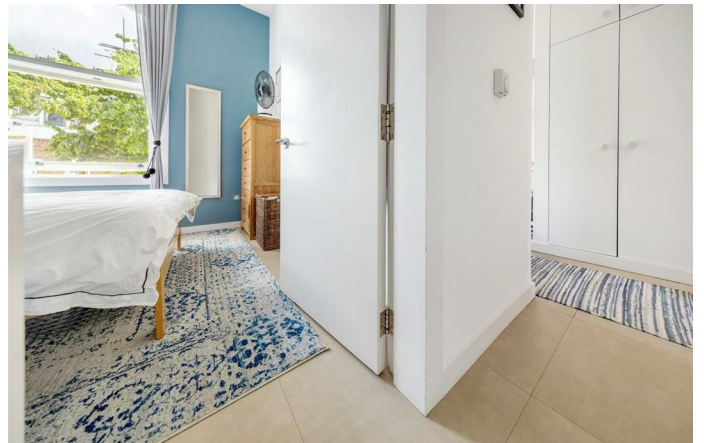
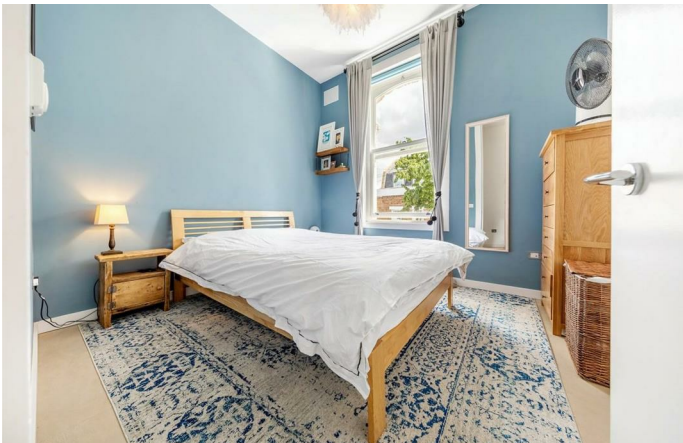
## Property Details

A stunning two double bedroom period conversion flat located a seven-minute walk to Brixton tube station and a ten-minute walk to Herne Hill. The open plan reception is a good size with high ceilings and flooded with natural light through multiple wooden sash windows. The kitchen is contemporary with ample room for a large dining table. The two double bedrooms are similar in size and the property benefits from under floor heating. The bathroom is modern and the hallway has a built-in storage cupboard. The flat is in great condition, ideal for anyone looking to move into a property hassle free.

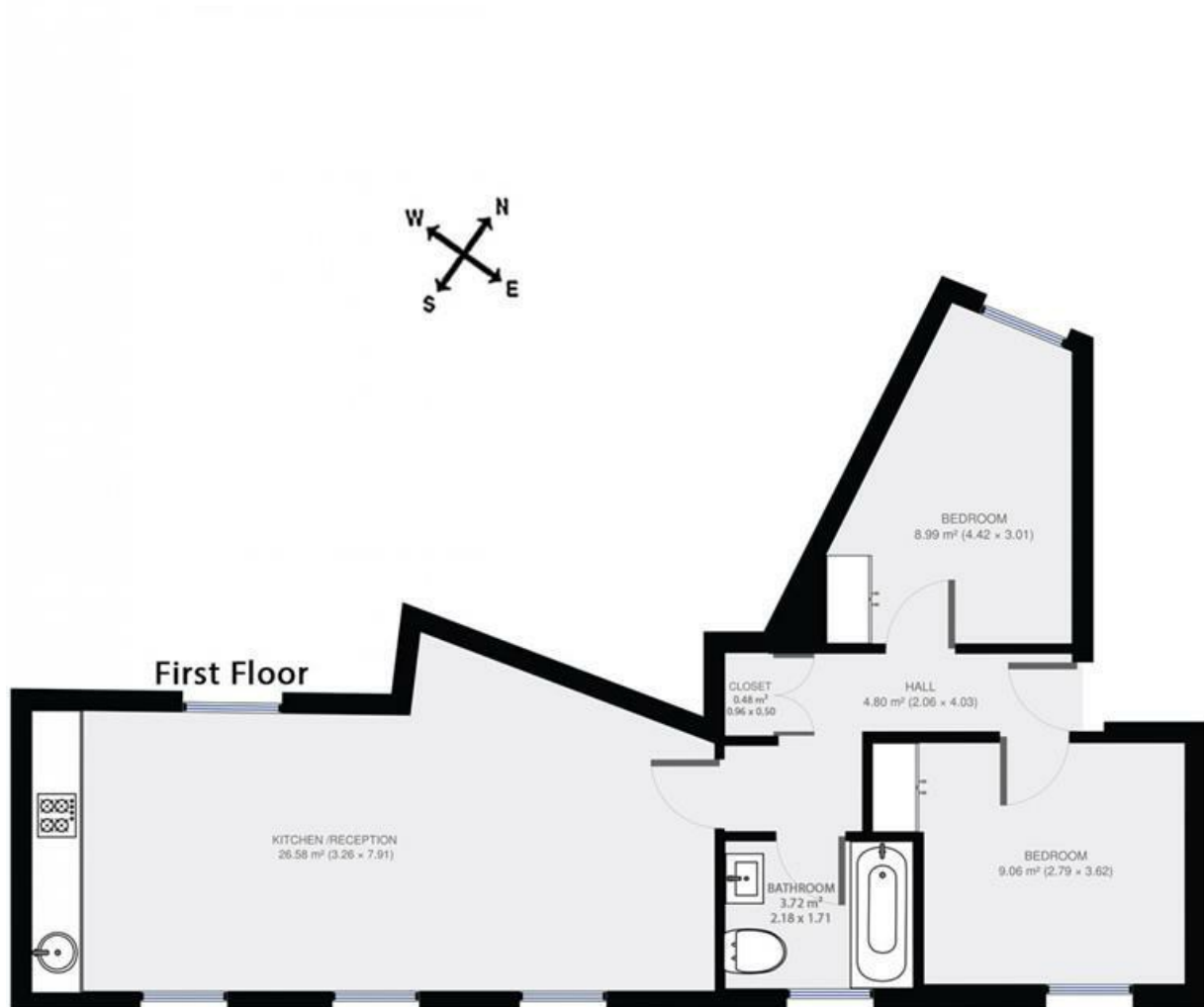
## Features

- Victorian
- Bright and airy throughout
- Sought after location
- Close to Brockwell Park
- Underfloor heating throughout

Council tax band D    EPC rating C (79)



## Barnwell Road



2 Bed Flat.

Approx internal area:

**593 sqft 55 sqm**

While we do try our very best, floor plans are produced as a guide only and we take no responsibility for the precise accuracy with which any property is represented

Barnwell Road, London, SW2

