



## Dalberg Road, London, SW2

£550,000

2 bedroom flat for sale

### Property Details

A two double bedroom flat split over the first and second floors of a charming Victorian terraced house, on one of Brixton's most popular residential roads close to Brockwell Park. With nearly 800 square feet of internal living space, the new purchaser will also have access to the loft space which offers a great storage solution. This characterful flat comprises a reception room spanning the width of the building, a separate eat-in kitchen diner, two comfortable double bedrooms and a modern bathroom. Brixton is a five-minute stroll and Herne Hill is a ten-minute walk.

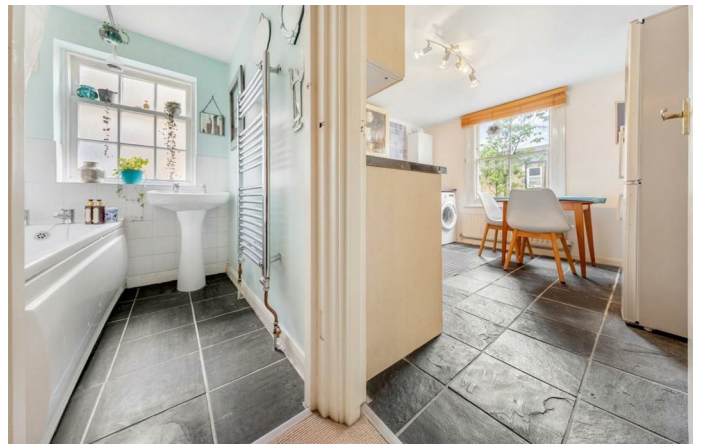
### Features

- Victorian
- Split-level
- Ample storage with access to the loft
- Sought after location
- Close to Brockwell park

Council tax band D

EPC rating C (69)





Dalberg Road, London, SW2



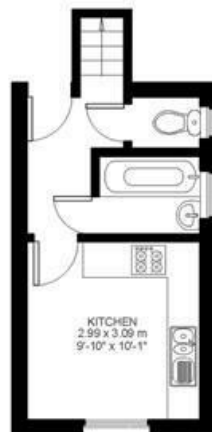
2 Bed flat

**Approx internal area:**

**780 sqft 72 sqm**

While we do try our very best, floor plans are produced as a guide only and we take no responsibility for the precise accuracy with which any property is represented

Dalberg Road



First Floor



Second Floor





Dalberg Road, London, SW2

