



Melville Court, 1 Charles Haller Street, SW2

3 bedroom flat to let

£585 Per Week

Furnished

Property Details

A wonderfully bright and airy three double bedroom, top floor apartment, nestled next to Brockwell Park. This gated development offers all the advantages of modern design and security, and is ideally located with direct access to the park - it's easy to forget that you are indeed just minutes from central Brixton. A smart open-plan reception is the heart of the home, comfortable dimensions to relax and unwind, dine and entertain, with a fully equipped, integrated kitchen opening out onto the space, offering an abundance of storage options and surface space. Bedrooms are well proportioned with one of the rooms having an en-suite bathroom.

Having access to a green space is now more important than ever for our wellbeing - luckily, the lush, open spaces of the award-winning Brockwell Park are right next to the property, along with its iconic 1930's Lido and unrivalled sports facilities. A pleasant walk through the park will bring you to leafy Herne Hill, and all that this village-like neighbourhood has to offer. With the park next door, and the enormous variety of night-life and restaurants on offer ten minutes away in Brixton, the location cannot be overstated. The popular establishments down Tulse Hill are also easily reached, including neighbourhood favourite haunts such as Naughty Piglets, Maremma and The Hootenanny. This elegant apartment is ideal for anyone who wants to be close to the action while maintaining a sense of calm. Living here you'll have the best of both worlds, with everything on offer in the hustle and bustle of central Brixton, yet will be able to retire to this peaceful development. First stop on the

Features

- Three bedrooms
- Leading onto Brockwell Park
- Split-level
- En-suite bathroom
- Light and airy
- Around a 13 minute walk to Herne Hill Station
- Furnished

Council tax band E EPC rating C (78)



Melville Court, 1 Charles Haller Street, SW2

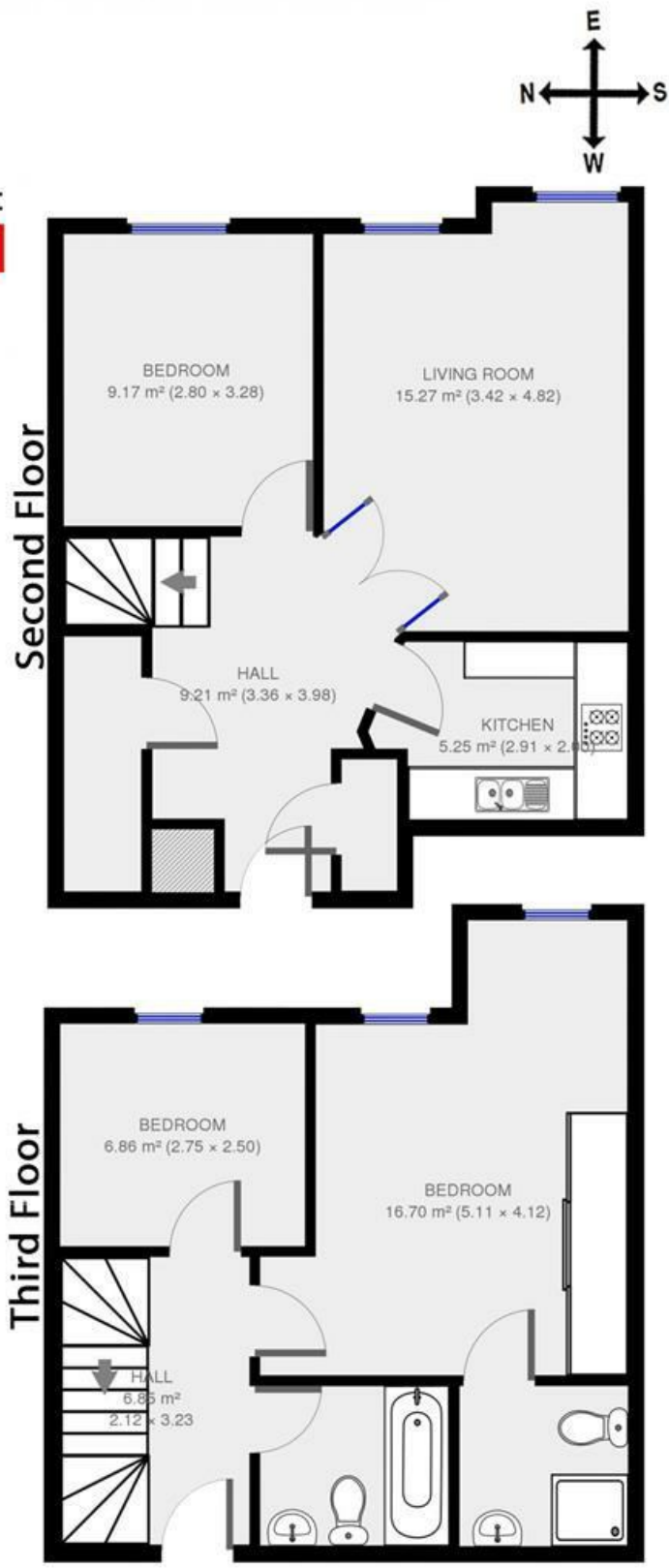


3 bed Flat.

Approx internal area:

862 sqft 80 sqm

While we do try our very best, floor plans are produced as a guide only and we take no responsibility for the precise accuracy with which any property is represented



Melville Court

Melville Court, 1 Charles Haller Street, SW2

