

Milton Road, Herne Hill, SE24

4 bedroom house to let

£969 Per Week

Not specified

Property Details

Keating Estates are proud to present this stunning and appealing house, offering four spacious bedrooms, fantastic living spaces and a lovely private garden. This fantastic family home is tucked away peacefully on one of Brixton's and Herne Hill's most sought-after residential streets on Poets corner.

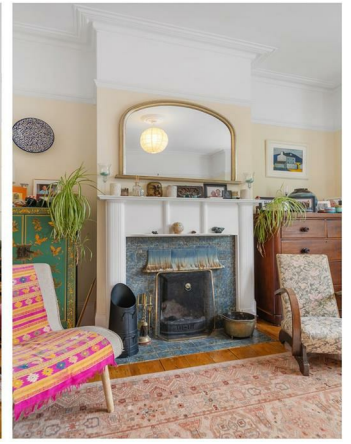
This charming home will appeal to a wide range of tenants and would be perfect for professional sharers or a family wanting a gorgeous, quiet space near to the hubbub of central Brixton and Brockwell Park on your door step. This is a beautifully presented home, a light and airy mix of elegant design and characterful features. The ground floor comprises a generous entrance hall, leading into a bright and spacious, dual-aspect reception room at the front of the property. Following on, a handy WC is nestled between the receptions and the impressive eat-in kitchen at the rear – this is an ideal family hub, with its smart units and stylish finish, complete with a trendy breakfast bar, off the kitchen you find yourself in the beautiful, quiet and tranquil garden providing a sunny escape in the summer months which also has additional summer house or garden studio which is rare for a house this size in this location. Four double bedrooms are arranged over two floors of the property, two contemporary bathrooms, one of which is an en-suite bathroom that serves the master bedroom.

Milton Road is situated in the heart of Poets' Corner, a highly desirable residential pocket of roads

Features

- Four Bedrooms
- Private Garden
- Dual reception
- Two bathrooms
- Sought after location
- Stone's throw from Brockwell Park

Council tax band E EPC rating E (53)



Milton Road, Herne Hill, SE24

Milton Road, SE24

4 Bedroom House

APPROXIMATE GROSS INTERNAL AREA:

1828 SQ FT / 169.8 SQ M

TOTAL AREA (INCLUDING OUTBUILDING):

1954 SQ FT / 181.5 SQ M



While we try our very best, floor plans are produced as a guide only and we take no responsibility for the precise accuracy with which any property is represented.

Milton Road, Herne Hill, SE24

