



## Endymion Road, Brixton, SW2

2 bedroom flat - conversion for sale

£600,000

Share of Freehold

### Property Details

A spacious two double bedroom apartment, split over the upper floors of an attractive Victorian end of terrace conversion. This wonderful flat offers generous proportions with an airy ambience. The bright reception is complimented by a bay window, plus room to relax and entertain at the dining table. High ceilings are adorned with modern downlights whilst the whole flat benefits from new flooring. The contemporary kitchen is well-equipped with sleek gloss and plentiful worktop space. A convenient WC sits adjacent. Both bedrooms are doubles, nestled to the rear away from the already quiet street whilst still separated from one another for privacy. The principal bedroom has fitted mirrored wardrobes and a fireplace. Upstairs, the second bedroom is similarly serene, still a well-proportioned double with the space for a desk if desired. The main bathroom is adjacent, equipped with a bathtub plus overhead shower. Currently providing capacious storage, a demised loft offers the potential to extend the property in the future, subject to the necessary permissions.

### Features

- Two double bedrooms
- Bathroom plus downstairs WC
- Victorian end of terrace conversion
- Bright and airy
- Over 850 square feet split over two floors
- Potential to extend STNP
- Sought after residential location
- Local amenities on the doorstep
- Short walk to Brockwell Park and central Brixton
- Share of freehold

Council tax band D

EPC rating D (55)

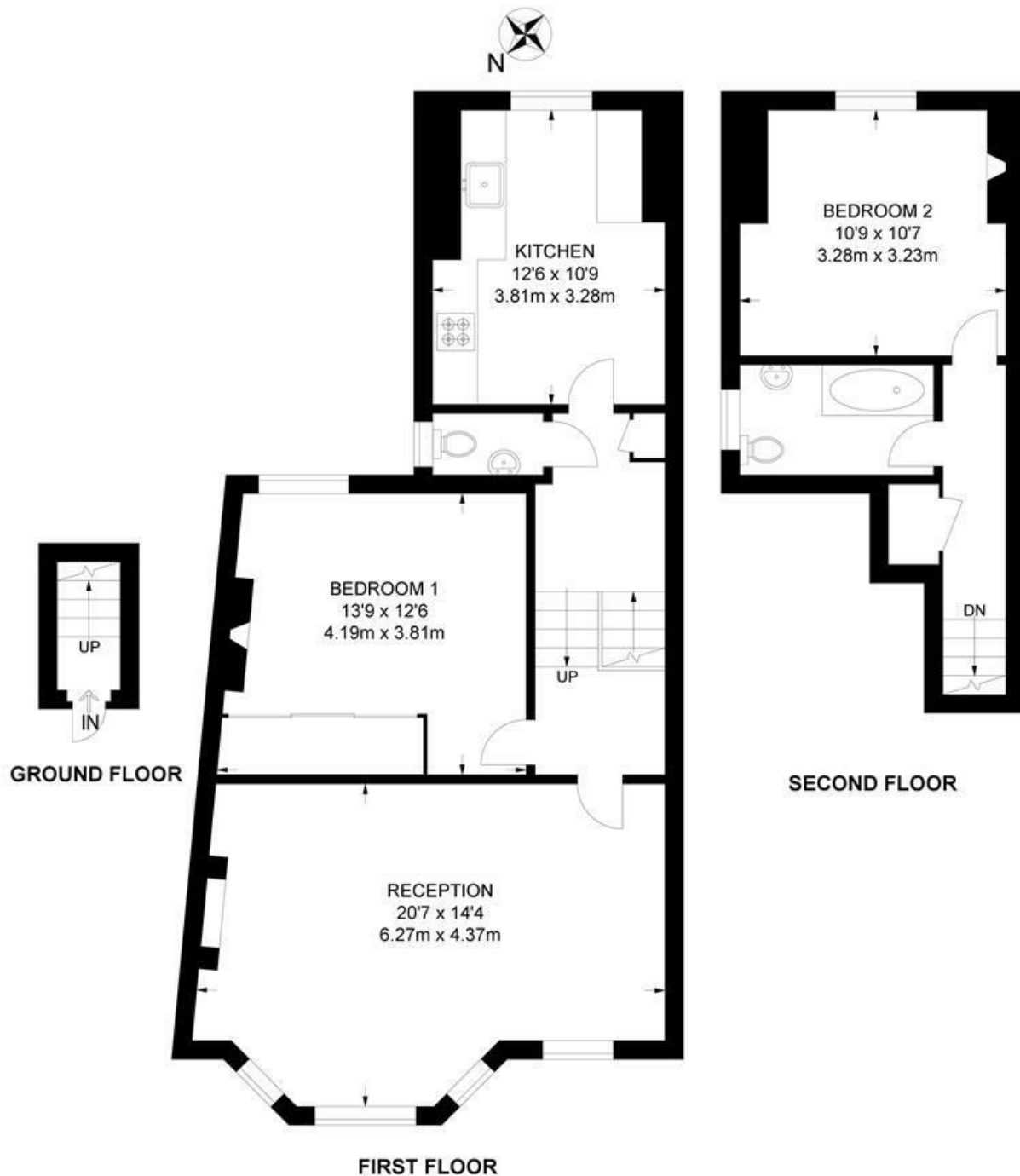




Endymion Road, Brixton, SW2

**Endymion Road, SW2**  
**2 Bedroom Flat**

APPROXIMATE GROSS INTERNAL AREA: **852 SQ FT / 79.1 SQ M**



While we try our very best, floor plans are produced as a guide only and we take no responsibility for the precise accuracy with which any property is represented.



Endymion Road, Brixton, SW2

