

Josephine Avenue, Brixton, SW2

2 bedroom flat - conversion for sale

£580,000

Share of Freehold

Property Details

A delightfully arranged flat occupying the ground floor of one of the lovely Victorian terraces on Josephine Avenue quietly set back from the road behind leafy neighbouring front gardens. The property comprises a separate reception room packed full of period features, two comfortable double bedrooms, a bright kitchen, a modern bathroom and a private garden. With nearly 900 square feet of internal living space, this well-presented home is a neutral blank canvas and has the fantastic benefit of a large cellar. Brixton tube station is a ten-minute stroll and Brockwell Park is a few minutes away.

Features

- Two double bedrooms
- Victorian conversion
- Sought-after location
- Private garden
- Close to Brockwell Park
- Bright and airy throughout
- Characterful features

Council tax band EPC rating E (54)



Josephine Avenue

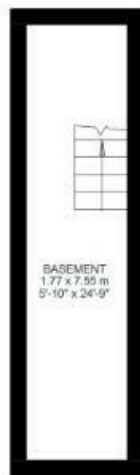
K

2 Bed Flat.

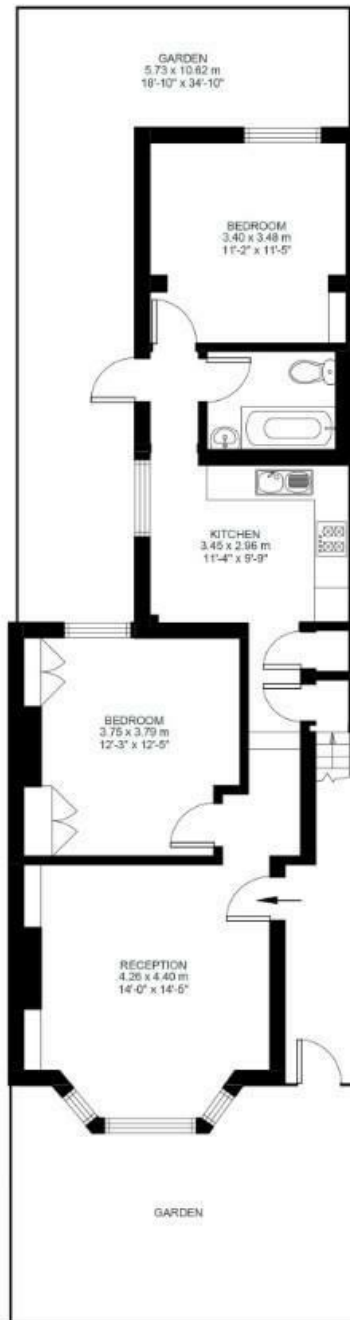
Approx internal area:

869 sqft 81 sqm

While we do try our very best, floor plans are produced as a guide only and we take no responsibility for the precise accuracy with which any property is represented



Basement



Ground Floor



Josephine Avenue, Brixton, SW2

