



**Acre Lane, Brixton, SW2**

2 bedroom flat to let

**£450 Per Week**

Furnished

## Property Details

A sleek and light two double bedroom flat situated in the heart of Brixton

## Features

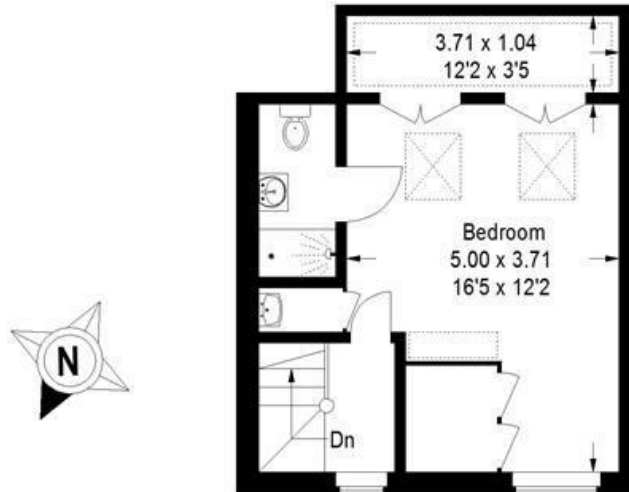
- Light and airy
- 2 double bedrooms
- 10 minute walk to Brixton Rube station
- 10 minute walk to Clapham North station
- Open plan kitchen/ reception
- Close to bars, restaurants and supermarkets

Council tax band C    EPC rating C (70)




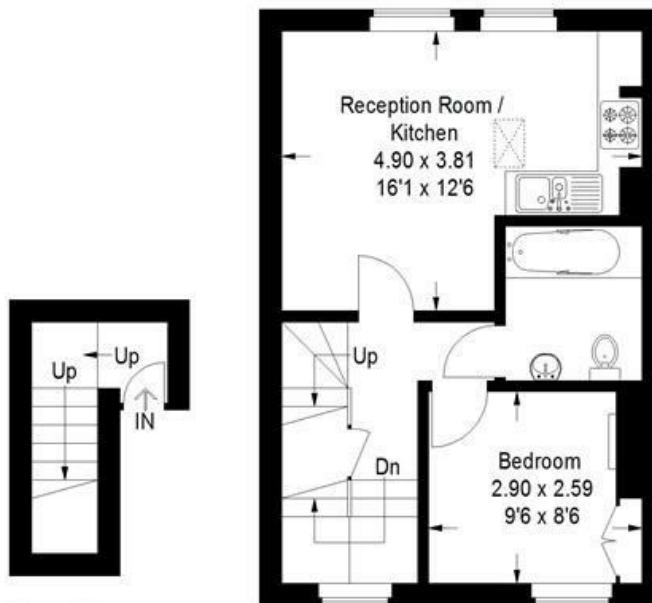
## Acre Lane, SW2

Approximate Gross Internal Area  
 First Floor = 3.8 sq m / 41 sq ft  
 Second Floor = 36.8 sq m / 396 sq ft  
 Top Floor = 28.9 sq m / 311 sq ft  
 Total = 69.5 sq m / 748 sq ft



**Top Floor**

 = Reduced headroom below 1.5 m / 5'0



**First Floor**

**Second Floor**

This plan is for layout guidance only. Not drawn to scale unless stated. Windows and door openings are approximate. Whilst every care is taken in the preparation of this plan, please check all dimensions, shapes and compass bearings before making any decisions reliant upon them. (ID188191)

Acre Lane, Brixton, SW2

