



Canterbury Crescent, Brixton, SW9

3 bedroom flat - purpose built for sale

£745,000

Leasehold

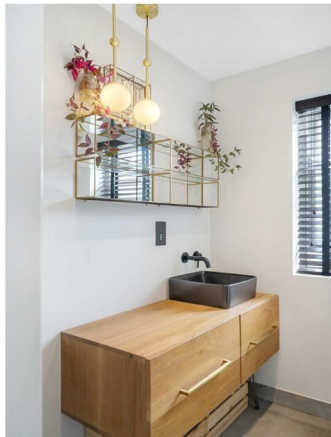
Property Details

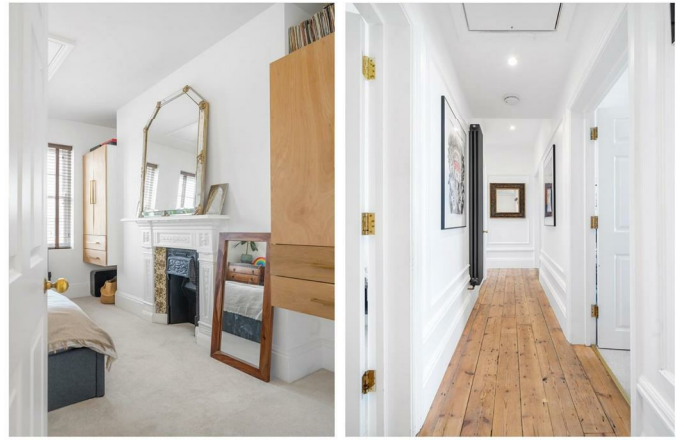
A fantastic three-bedroom, two-bathroom apartment, nestled securely on the top floor of an attractive Victorian mansion block. Renovated in 2019, this beautiful home has large proportions, wonderfully bright and private with city views due to the elevated position on the fourth floor. Packed full of character, the semi-open plan reception is divided by a concrete-finished pillar, creating a cosy living area, ergonomic kitchen and stunning dining area framed by arched sash windows. The kitchen is integrated within charcoal cabinetry offering generous storage, offset with brass fittings. A skylight bathes the worktops in light with lofty ceilings further enhancing this striking room. All three bedrooms are separated from one another for privacy, neutrally presented with plush carpets, the two largest with bespoke wardrobes and one, a feature fireplace. The principal bedroom is particularly appealing, set to the rear with large windows and the luxury of an attractive en-suite shower room. In the centre of the home, the main bathroom is equally as tasteful, with a bathtub and a separate shower. There is a utility cupboard in the hallway, plus direct access to a non-demised private roof terrace and loft with eaves, offering remarkable storage.

Features

- Three double bedrooms
- Two bathrooms
- Victorian mansion building
- Beautifully presented
- Bright and airy with views over the city
- Bike storage
- Situated in the heart of Brixton
- A rich variety of local amenities
- A short walk to Brixton Village and the Tube Station
- Chain-free

Council tax band A EPC rating C (77)





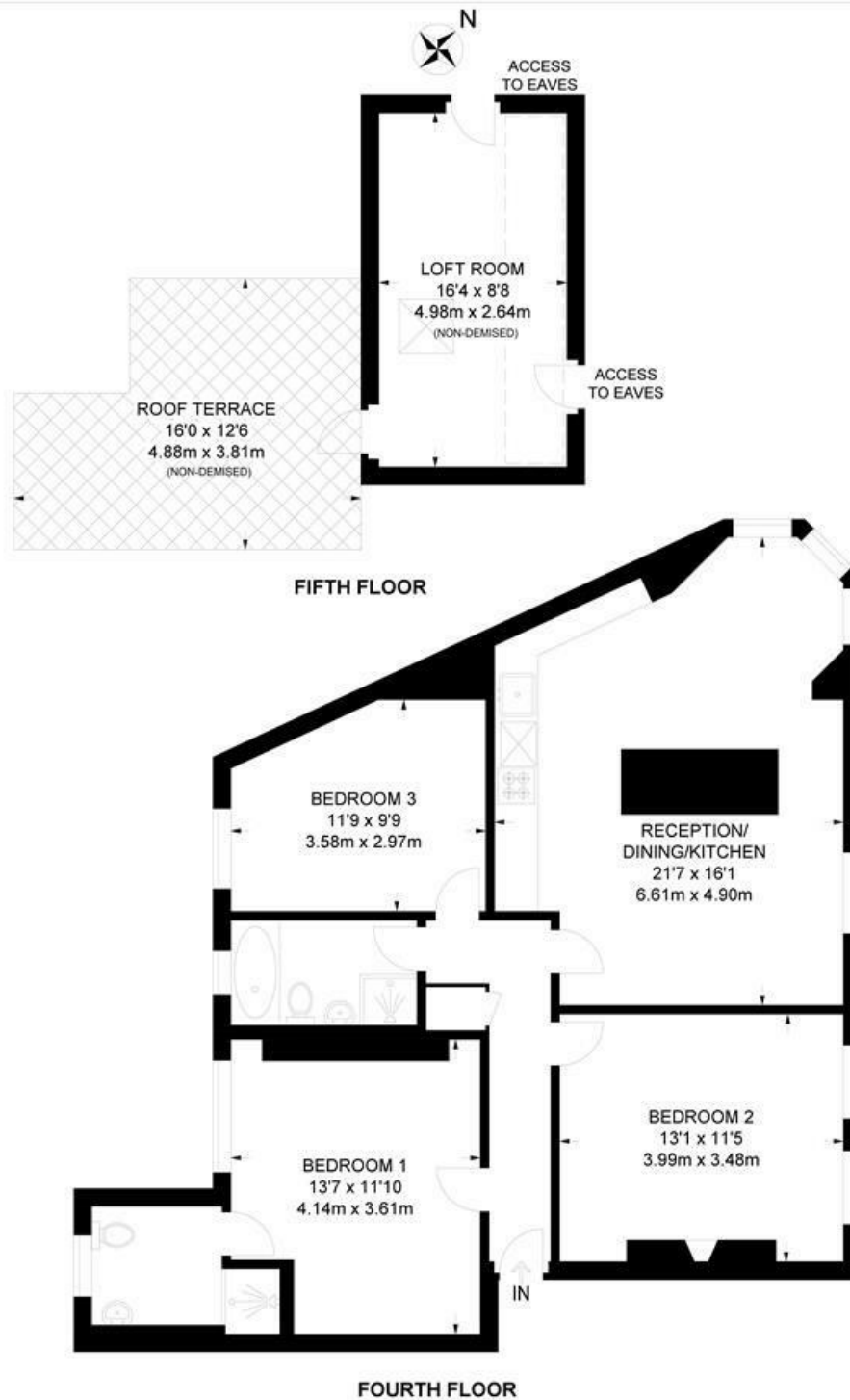
Canterbury Crescent, Brixton, SW9

Canterbury Crescent, SW9

3 Bedroom Flat

APPROXIMATE GROSS INTERNAL AREA: **896 SQ FT / 83.2 SQ M**

TOTAL AREA (INCLUDING LOFT ROOM): **1038 SQ FT / 96.4 SQ M**



While we try our very best, floor plans are produced as a guide only and we take no responsibility for the precise accuracy with which any property is represented.

Canterbury Crescent, Brixton, SW9

