



Shakespeare Road, Herne Hill, SE24

2 bedroom flat - conversion for sale

£600,000

Share of Freehold

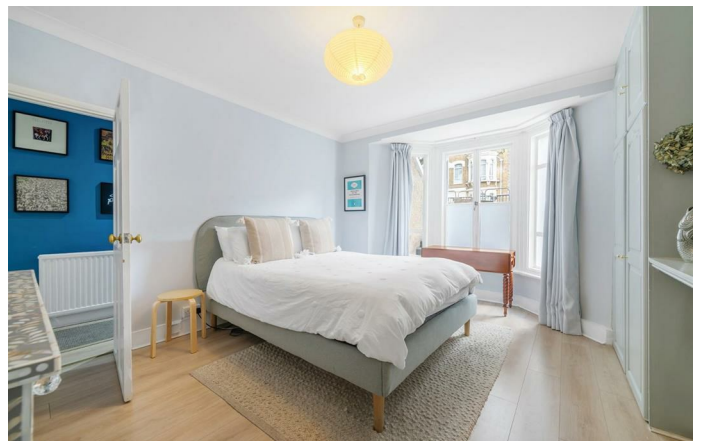
Property Details

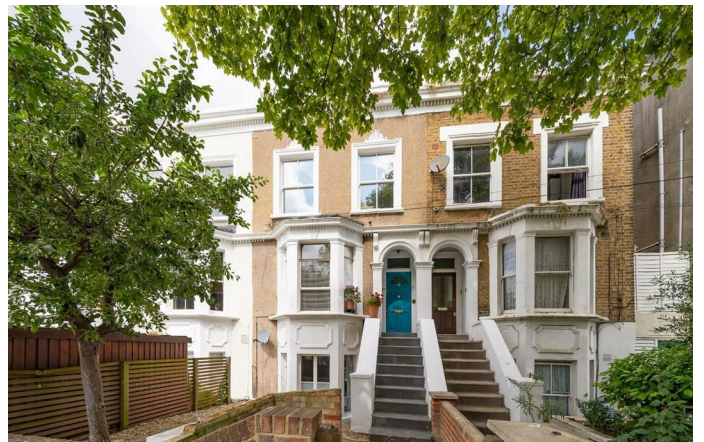
An attractive two bedroom garden flat, moments from Brockwell Park. Beautifully presented the apartment instantly feels like a home from the moment you enter. Accessed via its own front door, the property is a light and airy mix of period features and contemporary design. Nestled in the heart of the home is the generous reception, with the space to unwind and entertain. Leading off, is a sleek kitchen, with skylights promoting an elegant atmosphere, whilst storage and worktop space offer practicality. Dine in elegance with garden views through sliding doors to the outside seating area. The delightful private garden is an oasis of calm, escape the bustle of city life on the lawn, or host BBQs on the patio. Both bedrooms are spacious doubles with fitted wardrobes and peaceful pastel presentation, set apart from one another for privacy. One boasts a wonderful bay window overlooking the front garden of the building, with the quiet, neighbourly street beyond. Tucked to the rear, the second enjoys French doors to the garden, suited to lazy weekends whilst offering a pleasant setting for those who work from home. The tastefully finished bathroom is conveniently set in the centre of the home, featuring a luxurious walk-in rain shower.

Features

- Two double bedrooms
- Large private garden
- Victorian conversion
- Private entrance
- Well-presented throughout
- Set in the desirable Poet's Corner
- Herne Hill a six-minute walk
- Brixton an eight-minute stroll
- Brockwell Park and Lido at the end of the road
- Chain-free & share of freehold

Council tax band C EPC rating (0)





Shakespeare Road, Herne Hill, SE24

Shakespeare Road, SE24

2 Bedroom Flat

APPROXIMATE GROSS INTERNAL AREA: 722 SQ FT / 67 SQ M



While we try our very best, floor plans are produced as a guide only and we take no responsibility for the precise accuracy with which any property is represented.

Shakespeare Road, Herne Hill, SE24

