



St. Faiths Road, Tulse Hill, SE21

2 bedroom flat - conversion for sale

£640,000

Share of Freehold

Property Details

An exceptional example of a two double bedroom garden flat occupying the entire ground floor of this extended Victorian terraced house on St. Faith's Road. There are multiple selling points including the location, the period features, proximity to transport, ample built-in storage and direct access from the wonderful eat-in kitchen diner into the garden, to name a few. St Faith's Road is a quiet residential one way straight street within a stone's throw from the green open spaces of Brockwell Park and Tulse Hill train station is within a three-minute walk.

Council tax band C

EPC rating D (61)

Features

- Two double bedrooms
- Victorian conversion
- Could be configured as a three bedroom garden flat
- Private garden with side access
- Beautifully finished throughout
- Close to transport links
- Characterful features





St. Faiths Road, Tulse Hill, SE21

K

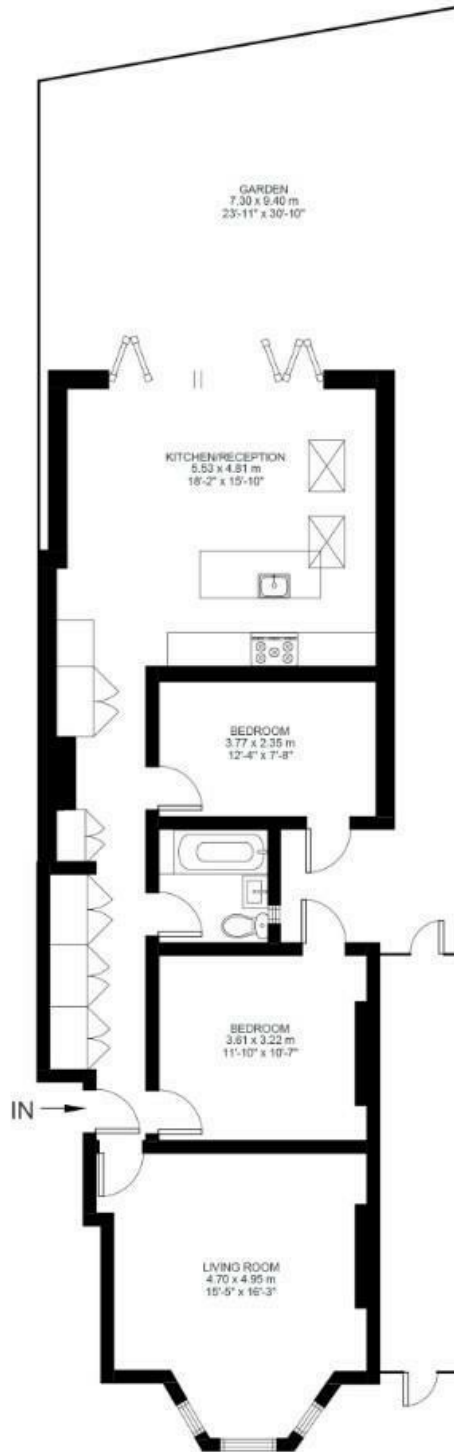
St. Faith's Road

2 Bed flat

Approx internal area:

929 sqft 86 sqm

While we do try our very best, floor plans are produced as a guide only and we take no responsibility for the precise accuracy with which any property is represented



Ground Floor



St. Faiths Road, Tulse Hill, SE21

