



Jelf Road, London, SW2

3 bedroom flat to let

£620 Per Week

Furnished

Property Details

Ideally located, this three double bedroom flat located a hop, skip and jump away from the famous greenery of Brockwell Park. The flat comprises a spacious reception room a separate kitchen with space for a dedicated dining area and access to the private balcony perfect for the warmer months. There are a further three spacious double bedrooms one having the benefit of two large skylights allowing plenty of light to flood in and a family size bathroom shared between all three bedrooms. The property is just a short walk from the town center of Brixton where you can find a vast amount of High street stores and supermarkets not to mention the pubs, bars, and restaurants. Brixton is known for its buzzy nightlife you'll never be stuck for choice.

Features

- Conversion Flat
- 3 Bedrooms
- Around a 10 minute walk to Brixton Station
- Under a 13 minute walk to Brockwell Park
- Close To Transport Links
- Balcony
- Separate Kitchen

Council tax band EPC rating D (55)



Jelf Road

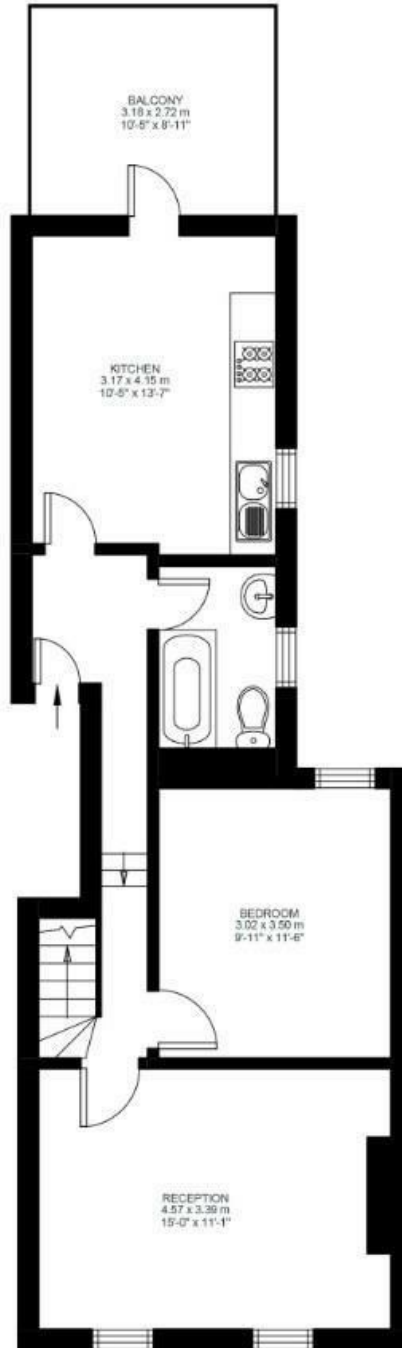
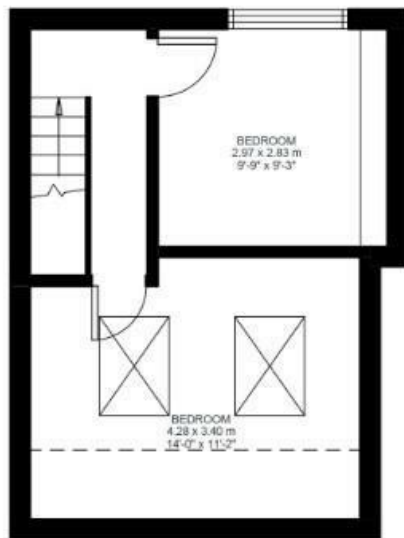
K

3 Bed flat

Approx internal area:

873 sqft 81 sqm

While we do try our very best, floor plans are produced as a guide only and we take no responsibility for the precise accuracy with which any property is represented



Jelf Road, London, SW2

