



Archbishop's Place, Brixton, SW2

2 bedroom house for sale

£750,000

Freehold

Property Details

A rare opportunity to acquire one of the delightful cottages in Archbishop's Place. This charming two double bedroom period home boasts appealing character with a pleasant outlook and an abundance of natural light throughout. Archbishop's Place is a tranquil and leafy close-knit community which feels secluded yet is close to the action with a wealth of well-tended gardens and historic charm. Enjoying a private position, the home is set back from the road by a pathway to the front door. The ideal space for entertaining, the ground floor has with two well-proportioned spaces, currently a reception and a separate dining room, with kitchen leading off it. Leafy views through sash windows add to the appealing ambience. A French door leads off the dining room to the private garden. At 44ft in length, the large South-East facing garden is a tranquil and sunny delight, surrounded by greenery plus a side access gate. Upstairs, two well-proportioned double bedrooms share a generous family-sized bathroom, with original floorboards and a bathtub with overhead shower. Ready to move in straight away, with neutral modern design and contemporary finishes, with the potential to stamp your own mark over time.

Council tax band E EPC rating E (54)

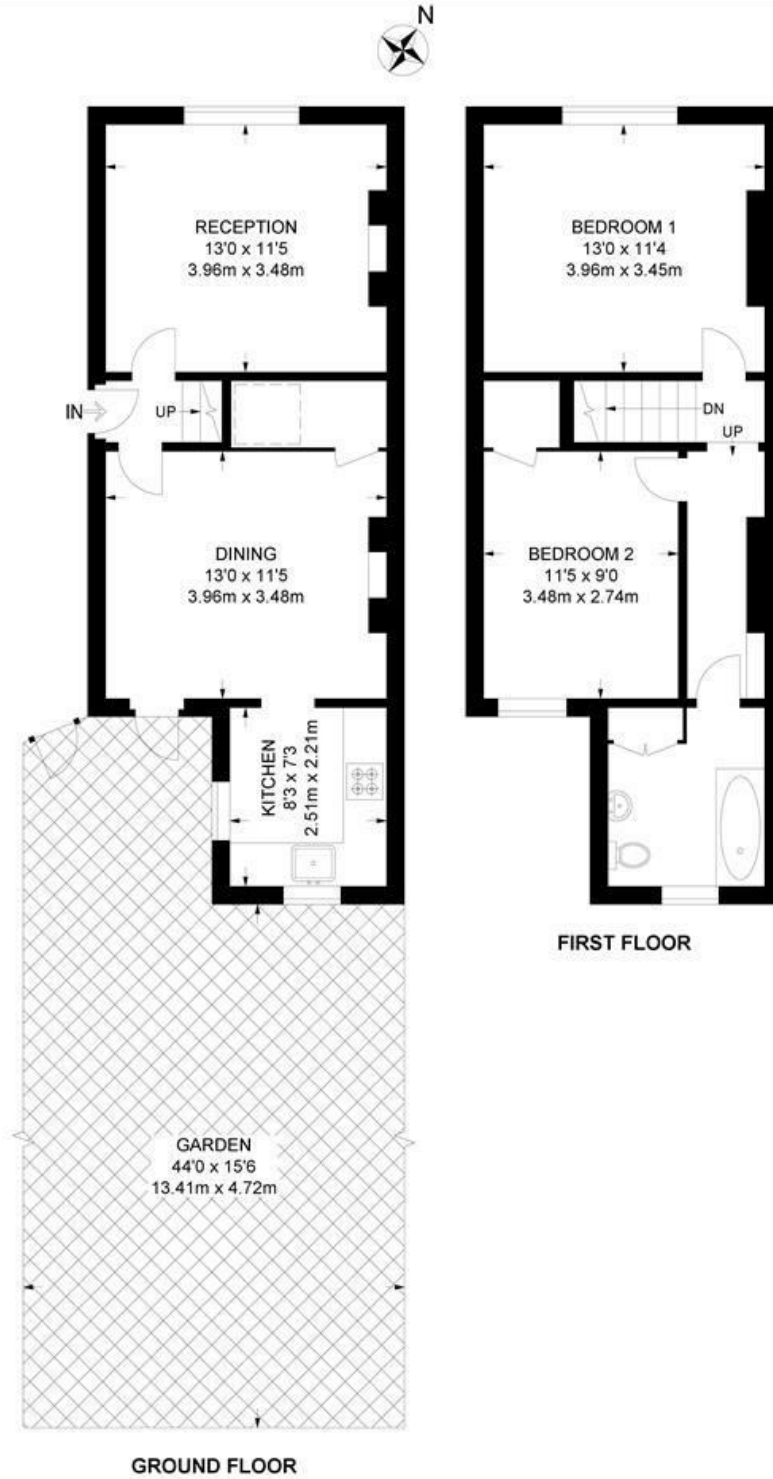
Features

- Two double bedrooms
- Large South-East facing private garden
- Victorian house
- Sought-after close-knit and tranquil community
- Local amenities on the doorstep
- Brockwell Park a short stroll away
- Walking distance to Brixton and Herne Hill
- Access to the Victoria Line, Thameslink and Overground
- Regular day and night buses
- Freehold and chain-free



Archbishops Place, SW2
2 Bedroom House

APPROXIMATE GROSS INTERNAL AREA: **814 SQ FT / 75.6 SQ M**



While we try our very best, floor plans are produced as a guide only and we take no responsibility for the precise accuracy with which any property is represented.

Archbishop's Place, Brixton, SW2

