



**St Saviour's Road, London, SW2**

**£750,000**

3 bedroom flat for sale

## Property Details

This exceptional, split-level, three double bedroom flat occupies the first and second floors of a grand detached Victorian house on St Saviour's Road, a quiet residential street conveniently located off Brixton Hill. With over 1300 square feet of internal living space and access to a private garden, this flat is a rare find. The property is split over various levels which amplifies the feeling of space and with three comfortable double bedrooms plus a smaller fourth bedroom, the layout is versatile. The separate reception room is superb and the modern kitchen diner is spacious. Chain free.

## Features

- Private garden
- Victorian
- Bright and airy throughout
- Ample storage with access to the loft
- Close to Brockwell Park

Council tax band D    EPC rating E (47)



St Saviour's Road, London, SW2

# St. Saviours Road

# K

## 3 Bed flat

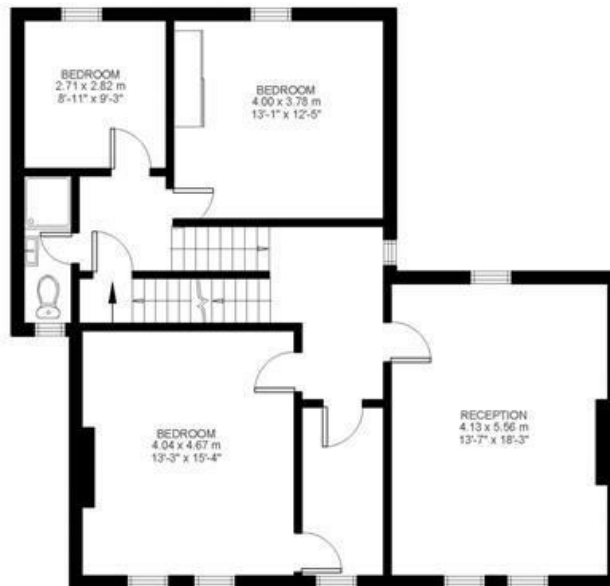
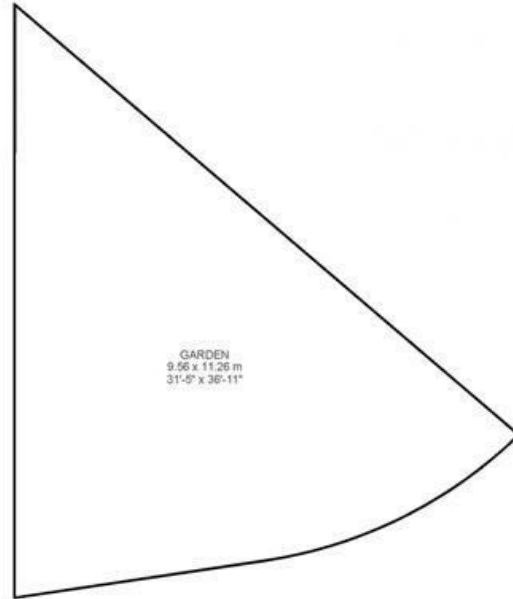
Approx internal area:

**1345 sqft 125 sqm**

While we do try our very best, floor plans are produced as a guide only and we take no responsibility for the precise accuracy with which any property is represented



Second Floor



First Floor



St Saviour's Road, London, SW2

