



**Leander Road, Brixton, SW2**

2 bedroom flat - conversion to let

**£475 Per Week**

Furnished

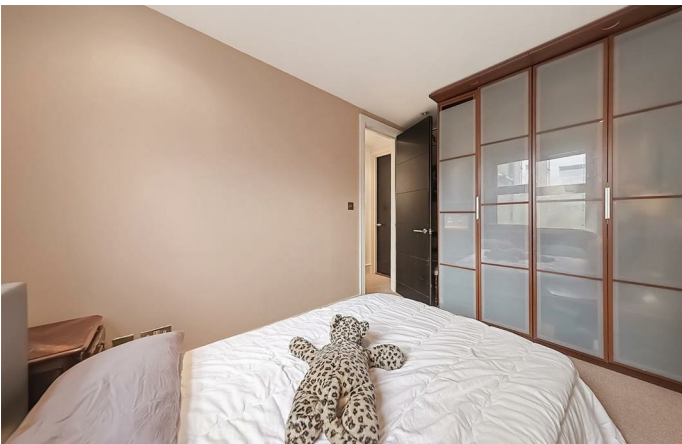
## Property Details

A fantastic two bedroom flat located on a popular residential street, located in the heart of the Josephine Avenue conservation area. The property comprises a open-plan kitchen and living room to the front of the flat is a lovely space, with ample room to relax and dine. The kitchen is contemporary with plenty of storage and worktop space. The master bedroom is a spacious double room situated at the rear of the building. The second bedroom, unusually, is similar in size. The bedrooms are separated by a spacious modern bathroom down the hallway. The property is located and benefits from all that Brixton offers, from the celebrated cuisine within Brixton Village to the music venues and nightlife the area is famous for. This particular road is highly sought after for its character and short distance to Brockwell Park, Brixton town centre and Herne Hill beyond. Within a ten minute walk down Effra Road you are situated at Brixton tube station, the first stop on the Victoria Line. Multiple buses run through Brixton and towards central London. Early viewings are recommended.

## Features

- Two bedrooms
- Open plan
- Modern
- Victorian conversion
- Bright and airy throughout
- Close to Brockwell Park
- Twelve minute walk from Central Brixton

Council tax band C    EPC rating C (79)

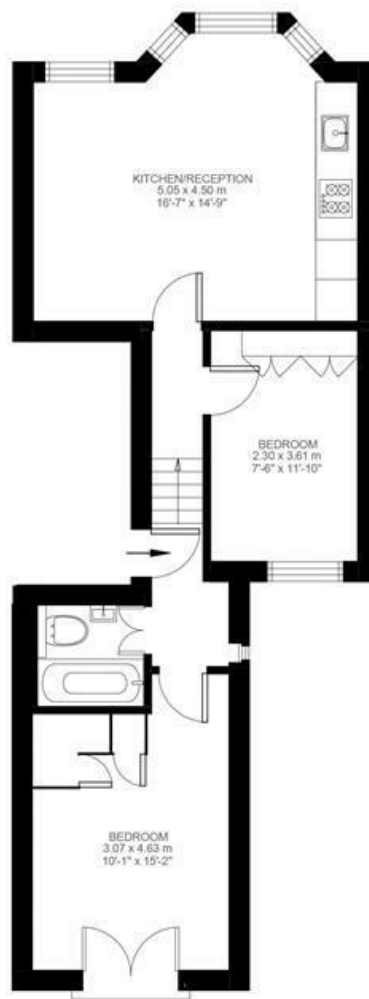


Leander Road, Brixton, SW2

Leander Road, Brixton, SW2

2 Bedroom Flat

Approximate internal area: 554 sqft 51 sqm



First Floor



While we do try our very best, floor plans are produced as a guide only and we take no responsibility for the precise accuracy with which any property is represented.

Leander Road, Brixton, SW2

