

**Stansfield Road, Brixton, SW9**

4 bedroom house - terraced for sale

**£900,000**

Freehold

## Property Details

A fantastic opportunity to extend and completely refurbish this four-bedroom Victorian terraced house on Stansfield Road, a desirable residential one-way street located in central Brixton within walking distance to Clapham and Stockwell. This three-storey Victorian house is in need of complete modernisation and boasts nearly 1700 square feet of living space. It could also be extended subject to the necessary permissions. Purchasers will find themselves with the best of both worlds, located between Brixton, Clapham and Stockwell, appealing to purchasers contemplating moving to all three areas.

Council tax band F      EPC rating (null)

## Features

- Four double bedrooms
- Victorian terraced house
- Chain-free
- Close to transport links
- Development potential
- In need of complete refurbishment
- Walking distance to three separate tube stations



Stansfield Road

**K**

4 Bed House

Approx internal area:

**1673 sqft 155 sqm**

(EXCLUDING EAVES STORAGE)

While we do try our very best, floor plans are produced as a guide only and we take no responsibility for the precise accuracy with which any property is represented



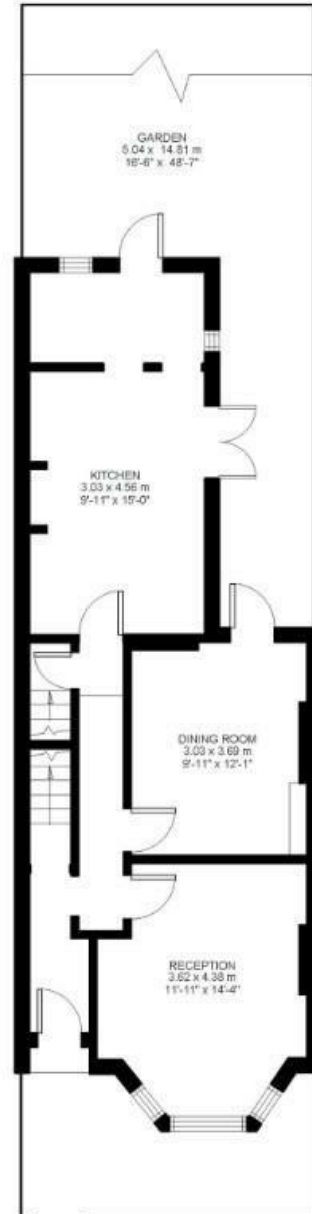
Basement



Second Floor



First Floor



Ground Floor



Stansfield Road, Brixton, SW9

