



## Helix Road, Brixton, SW2

2 bedroom flat to let

**£450 Per Week**

Furnished

### Property Details

This wonderful two double bedroom first floor flat located on a quiet residential street close to Brockwell Park and a great selection of pubs and restaurants. The flat comprises of a light and airy open plan kitchen reception area with enough space for a dining table - ideal for inviting friends over for drinks or dinner. A family size bathroom, two spacious double bedrooms, one of which has access to a private balcony which you can enjoy through the summer months. Living here you'll be around an eight minute walk to the beloved open green spaces of Brockwell park and around a sixteen minute walk to Herne Hill station.

### Features

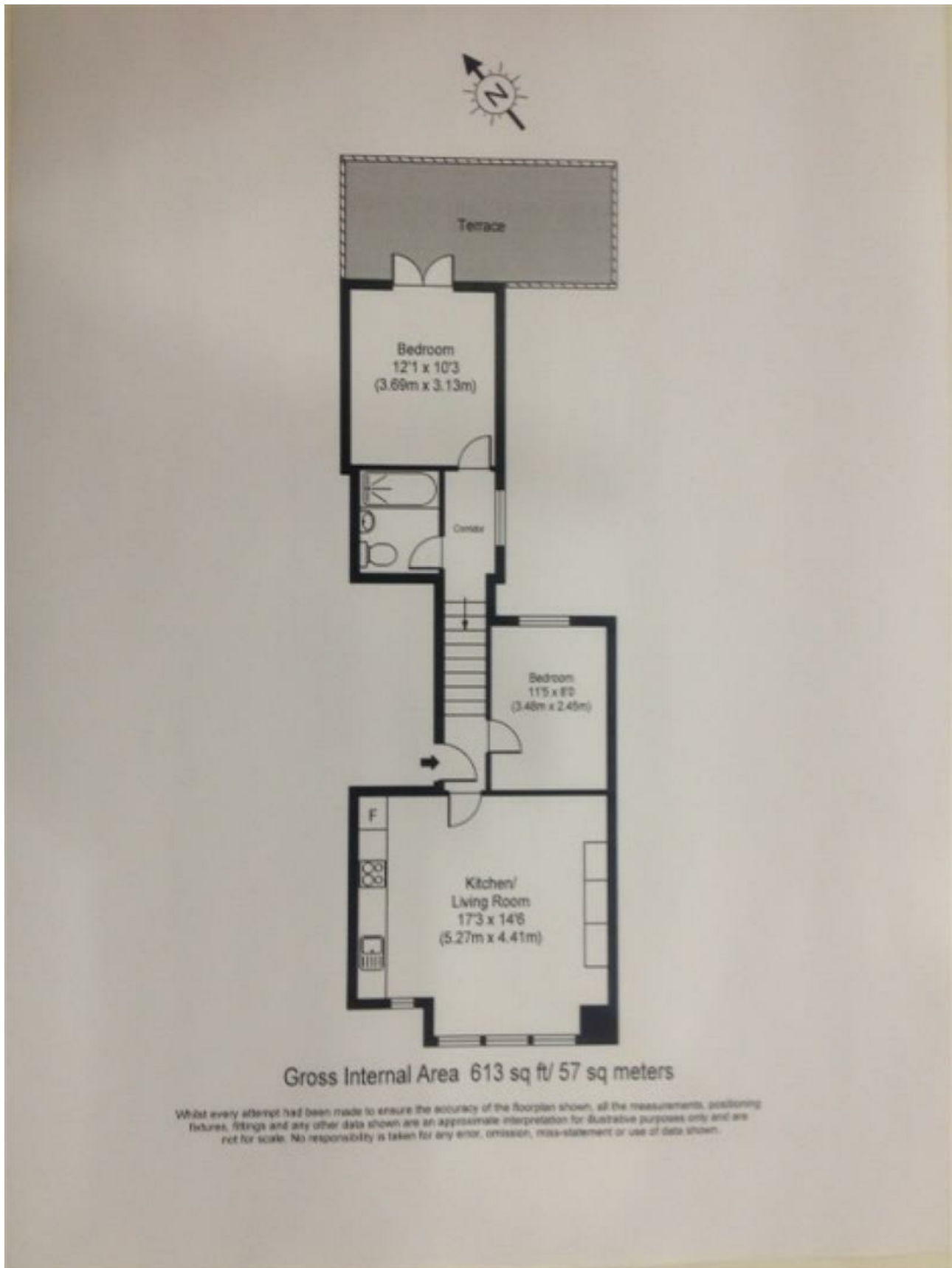
- Around an 8 minute walk to Brockwell park
- Around a 16 minute walk to Brixton underground
- Two bedrooms
- Open plan kitchen and reception
- Bright and airy
- One bathroom

Council tax band C      EPC rating C (78)





Helix Road, Brixton, SW2



Helix Road, Brixton, SW2

