



Christchurch Road, Brixton, SW2

1 bedroom flat - purpose built for sale

£315,000

Share of Freehold

Property Details

A tastefully decorated one double bedroom apartment with a private terrace boasting sunset views. Set within an Art Deco gated mansion building with lift access, concierge, communal grounds, bike storage and off-street parking subject to availability. The third floor setting ensures additional light and privacy creating a bright ambience, raising the flat above street level to offer views across the landscape including spectacular sunsets. The reception has high ceilings and characterful parquet flooring, with great dimensions and space to relax and dine. The South-West facing covered terrace is a fantastic spot to dine al-fresco come rain or shine. Contemporary and ergonomic, the kitchen has storage within sleek cabinetry, wrapping around to maximise worktop and storage space with leafy views. The bedroom is a comfortable double with large double-glazed windows and a spacious fitted wardrobe, with plush, cosy carpets. The bathroom is bright and tastefully presented, equipped with a bathtub plus overhead rain shower, complete with storage. This secure well-maintained Art Deco building has recently undergone extensive refurbishments which are now completed.

Council tax band B

EPC rating C (69)

Features

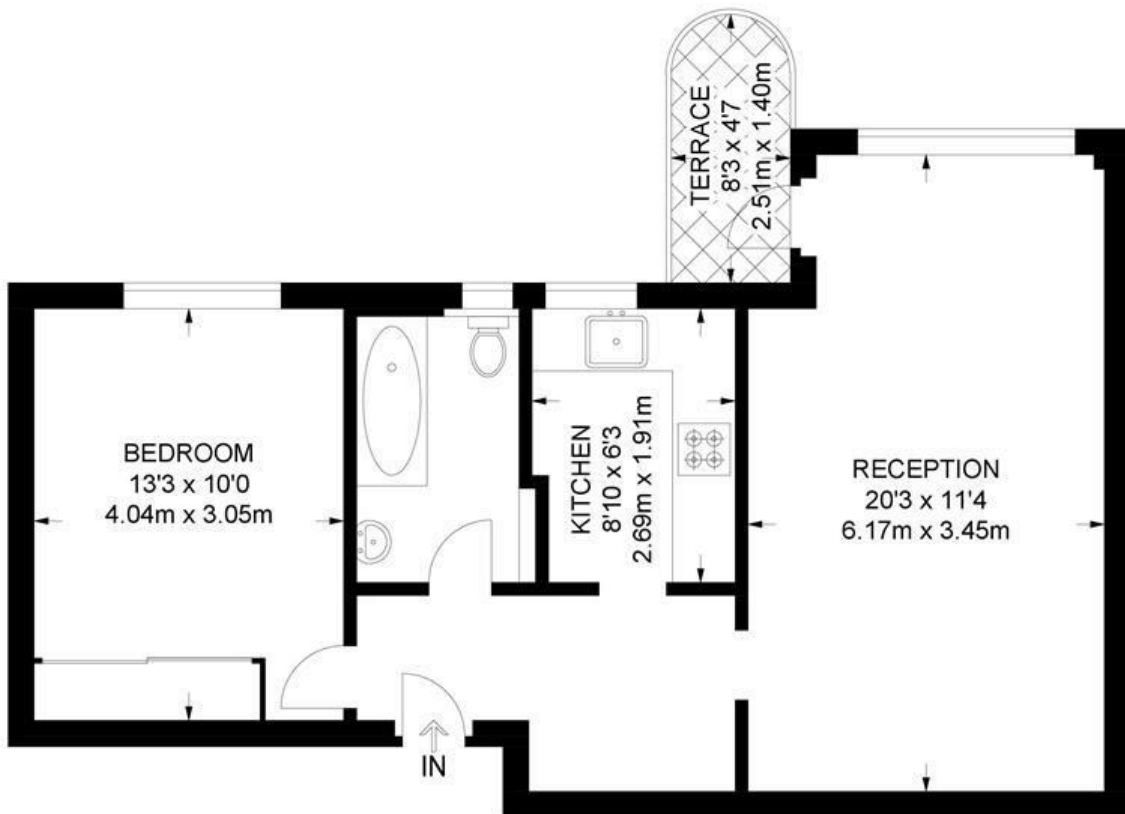
- One double bedroom
- South-West facing private terrace with sunset views
- Recently refurbished Art Deco building
- 540 square feet of internal space
- Communal grounds, lift and bike storage
- Streatham High Street a six-minute stroll
- Ten-minute walk to the station
- Brixton, Clapham, Balham and Tulse Hill all within walking distance
- Share of freehold



Christchurch Road, Brixton, SW2

Christchurch Road, SW2
1 Bedroom Flat

APPROXIMATE GROSS INTERNAL AREA: **540 SQ FT / 50.2 SQ M**



THIRD FLOOR



While we try our very best, floor plans are produced as a guide only and we take no responsibility for the precise accuracy with which any property is represented.

Christchurch Road, Brixton, SW2

