



## Russell Grove, Oval, SW9

5 bedroom house for sale

£1,150,000

Freehold

### Property Details

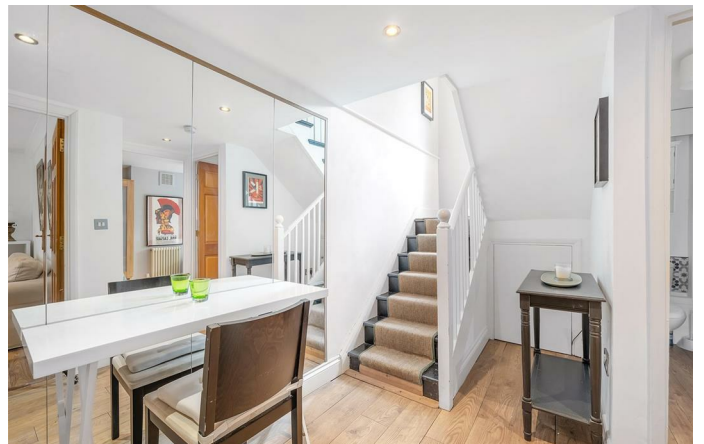
A unique Grade II listed period townhouse boasting five bedrooms and four bathrooms plus a WC, with a beautifully landscaped garden. Nestled on a quiet cul-de-sac moments from Eythorne Park. This beautiful home strikes the balance of period features combined with a layout suited to contemporary living, creating an appealing and unique environment. The raised ground floor comprises a double aspect reception and dine-in kitchen packed with period charm, perfect for entertaining. The kitchen has generous storage within contemporary cabinetry, sweeping along one wall with space for a dining table. Currently set up for a more formal dining experience, the reception boasts an air of grandeur, ideal for lounging in front of the beautiful fireplace. Sliding doors separate the rooms. The garden is attractively manageable with planters adding lush greenery and creating zoned seating areas. Five bedrooms are arranged over the three remaining floors, with the unique appeal of each enjoying access to a bathroom. Bedroom four is currently a second reception, highlighting the versatility that the house offers. The largest bedroom is peacefully atop the home with attractive views.

Council tax band E      EPC rating (null)

### Features

- Five bedrooms
- Four bathrooms plus WC
- Private landscaped garden
- Grade II Listed period townhouse
- Quiet cul-de-sac between Oval, Camberwell and Brixton
- Multiple parks on the doorstep
- Local amenities and eateries
- Northern line a twelve-minute stroll
- Victoria line and Thameslink within walking distance
- Chain-free and freehold









Russell Grove, Oval, SW9

**Russell Grove, SW9**

**5 Bedroom House**

APPROXIMATE GROSS INTERNAL AREA: **1570 SQ FT / 146 SQ M**



While we try our very best, floor plans are produced as a guide only and we take no responsibility for the precise accuracy with which any property is represented.



Russell Grove, Oval, SW9

