



Jeffreys Road, Clapham, SW4

1 bedroom flat to let

£403 Per Week

Part furnished

Property Details

We are proud to offer this charming ground floor period conversion in a prime location on a quiet residential street in Clapham. The open plan kitchen and reception is full of character, with plenty of storage and floor to ceiling windows opening out onto the private courtyard garden. The bedroom is cosy and inviting with built in wardrobes making the most of the space. Across the hall is the bathroom which is a clean and modern white suite. Jeffreys Road is only a short walk from Stockwell Station making this the perfect property for those looking for easy access into the city,

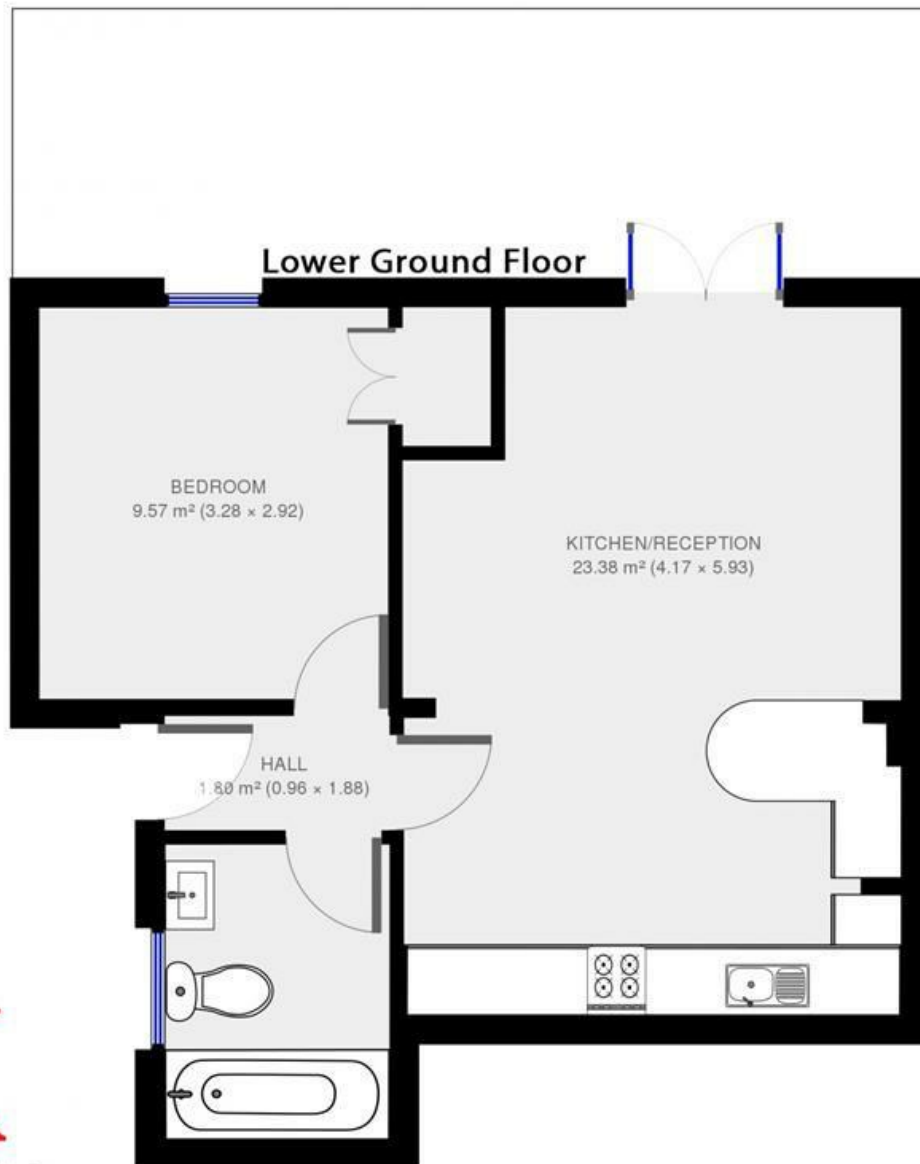
Features

- One double bedroom
- Family bathroom
- Open plan reception and kitchen area
- Private garden
- Characterful features

Council tax band EPC rating C (69)



Jeffreys Road

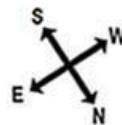


1 bed Flat.

Approx internal area:

463 sqft 43 sqm

While we do try our very best, floor plans are produced as a guide only and we take no responsibility for the precise accuracy with which any property is represented



Jeffreys Road, Clapham, SW4

