

St Matthews Road, Brixton, SW2

2 bedroom flat to let

£500 Per Week

Part furnished

Property Details

This quiet, secluded two double bedroom flat located in Brixton is very spacious as well as being charming in character. The flat comprises of a spacious living room with a dedicated dining space overlooking the garden through wall to wall windows. The long galley kitchen opens off the reception room through double doors. The bedrooms are also spacious and have large windows flooding each bedroom with natural light. The bathroom is family size. To top this beautiful property off a wonderful benefit is that it has a very spacious garden that you can enjoy through the summer months, perfect for having guests and family over. The property is in the heart of Brixton and a stone's throw away from all the pubs, bars and restaurants. You'll never be short of a choice.

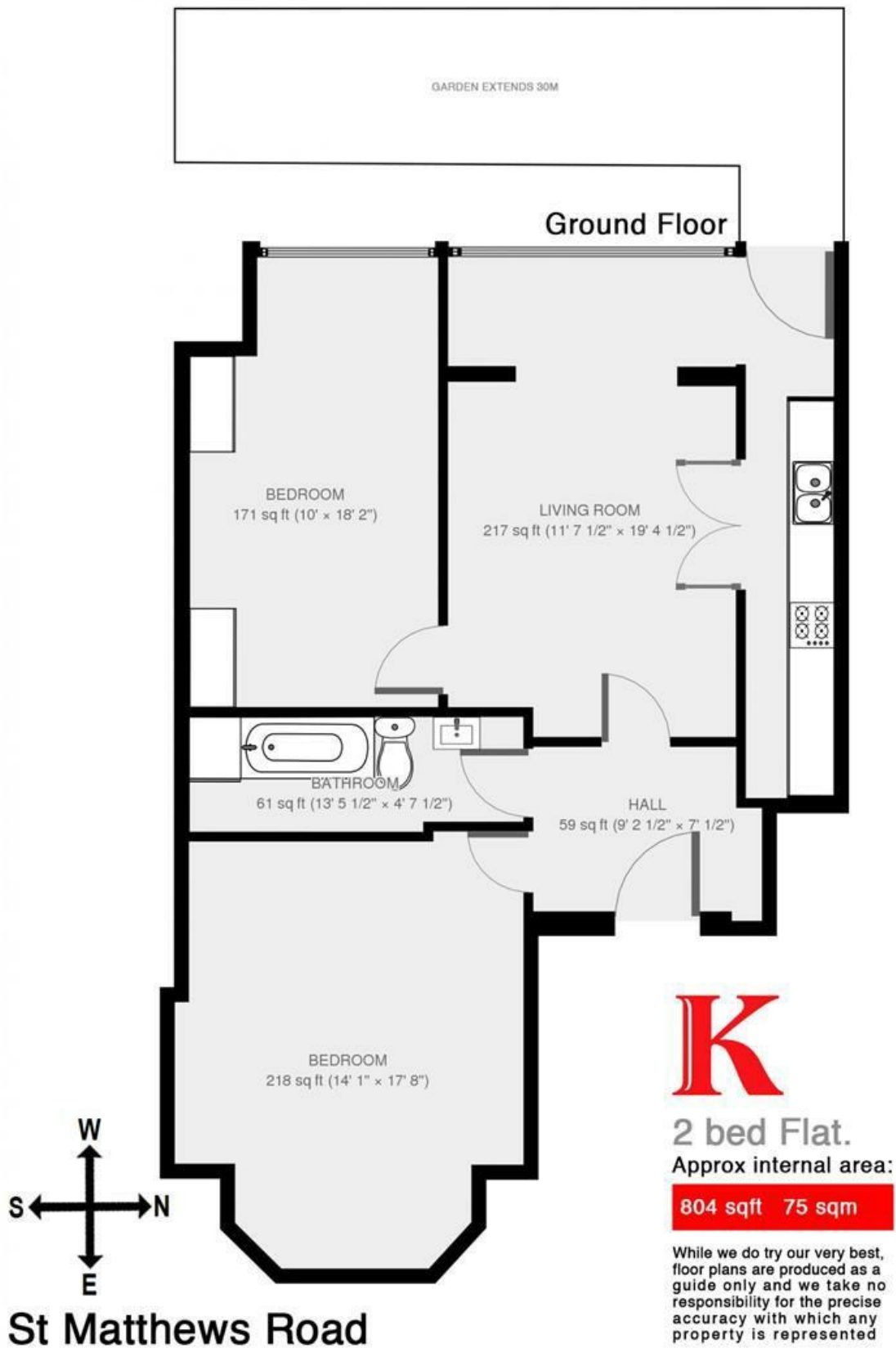
Features

- Private garden
- Bright and airy throughout
- Close to transport links

Council tax band D EPC rating C (69)



St Matthews Road, Brixton, SW2



St Matthews Road, Brixton, SW2

