

Mayall Road, Herne Hill, SE24

3 bedroom flat to let

£670 Per Week

Furnished

Property Details

A stunning, spacious, and bright three bedroom split level conversion flat located on a lovely residential street within walking distance to Central Brixton and Brockwell Park. The flat comes complete with a lovely reception room, separate kitchen which seamlessly flows out onto a tranquil private garden, three large bedrooms, and a modern family size bathroom shared between all three bedrooms. Mayall Road is an attractive terraced street, located between Brixton and Herne Hill. Herne Hill is just a short walk from the flat and known for its cafes, pubs, and restaurants, also very close to Brockwell Park is on your doorstep and a large Sainsbury's and Tesco are a short stroll away.

Council tax band C EPC rating D (67)

Features

- Split level
- Private Garden
- 3 Double bedrooms
- Separate reception
- 1 bathroom
- Close to Herne Hill
- Close to Brixton



K

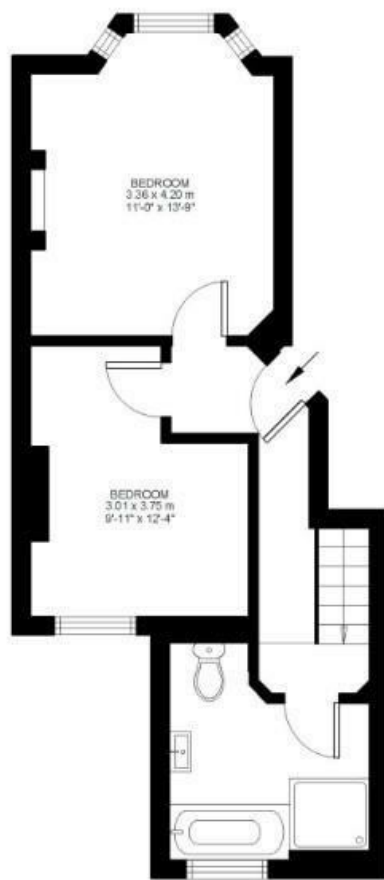
Mayall Road

3 Bed flat

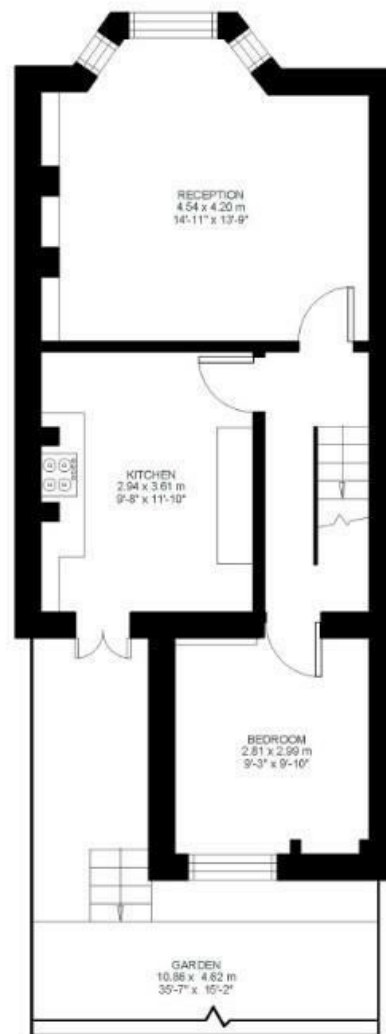
Approx internal area:

887 sqft 82 sqm

While we do try our very best, floor plans are produced as a guide only and we take no responsibility for the precise accuracy with which any property is represented



Ground Floor



Lower Ground Floor



Mayall Road, Herne Hill, SE24

