

Leander Road, Brixton, SW2

1 bedroom flat - conversion to let

£365 Per Week

Part furnished

Property Details

A well presented one double bedroom loft conversion flat located on one of Brixton's most popular roads. The apartment has a spacious open plan reception room with a fully fitted kitchen area off to one side and useful access to large storage areas in the eaves. Walk down the short flight of stairs to the rear of the building to the bottom landing and you will find the bathroom and large double bedroom. Leander Road is located on Brixton Hill which is well situated for easy access to Brixton station, the market and the plethora of excellent bars restaurants - you'll also be a short four minute walk from beloved Brockwell park and a short fourteen minute walk from Herne Hill station.

Council tax band C EPC rating D (55)

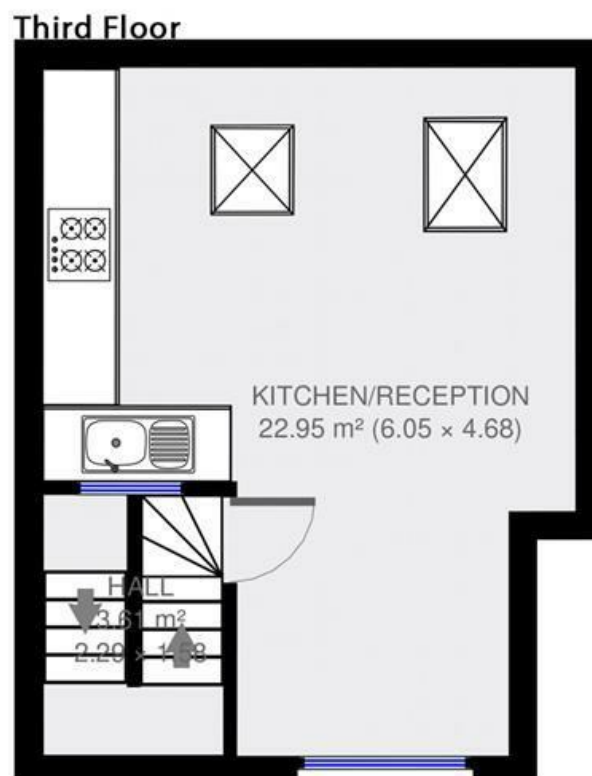
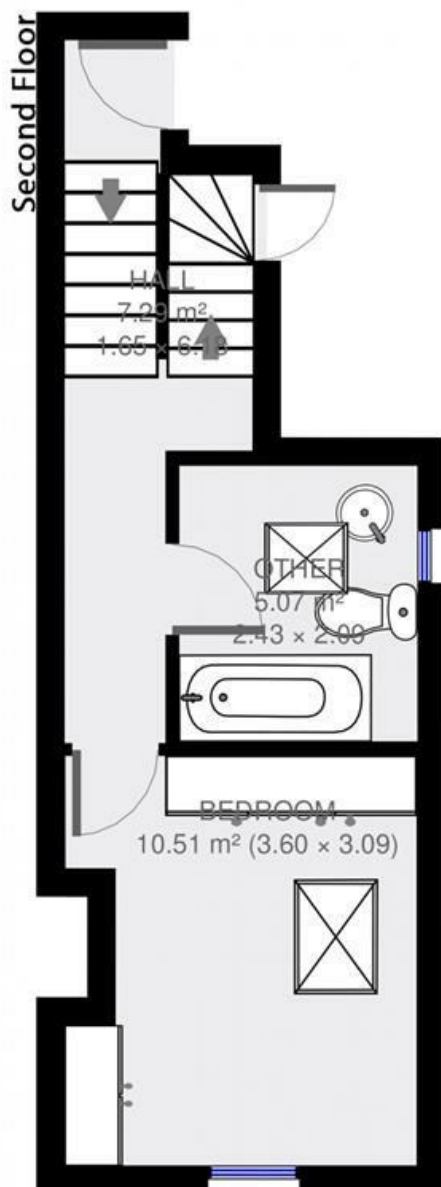
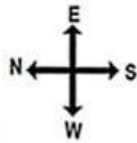
Features

- One double bedroom
- Modern family bathroom
- Open plan reception and kitchen
- Split level
- Around a 4 minute walk to Brockwell park
- Around a 13 minute walk to Herne Hill station
- Around a 16 minute walk to Brixton underground



Leander Road, Brixton, SW2

Leander Road



1 bed Flat.

Approx internal area:

528 sqft 49 sqm

While we do try our very best, floor plans are produced as a guide only and we take no responsibility for the precise accuracy with which any property is represented

Leander Road, Brixton, SW2

