

Ræburn Street, Brixton, SW2

2 bedroom flat to let

£480 Per Week

Furnished

Property Details

A stunning split level two double bedroom Victorian garden flat. Featuring a large eat-in kitchen, two spacious double bedrooms with ample of storage, a bright reception room and modern bathroom. Vibrant and bustling Brixton Village is just around the corner, but the property feels like a million miles away on these quiet, pretty streets. The property is situated in the heart of Brixton, a stone's throw from the restaurants, bars and cafés that make up the culinary Mecca of central Brixton. The property is within 10 minutes' walk of Brixton tube station and with Victoria thirteen minutes away door-to-door and The City only twenty-five minutes away, The Effra Pub is on the next street with its jazz and reggae live nights and the green, open spaces of Brockwell Park are a short stroll away. All in all, a fantastic property in a highly sought-after location.

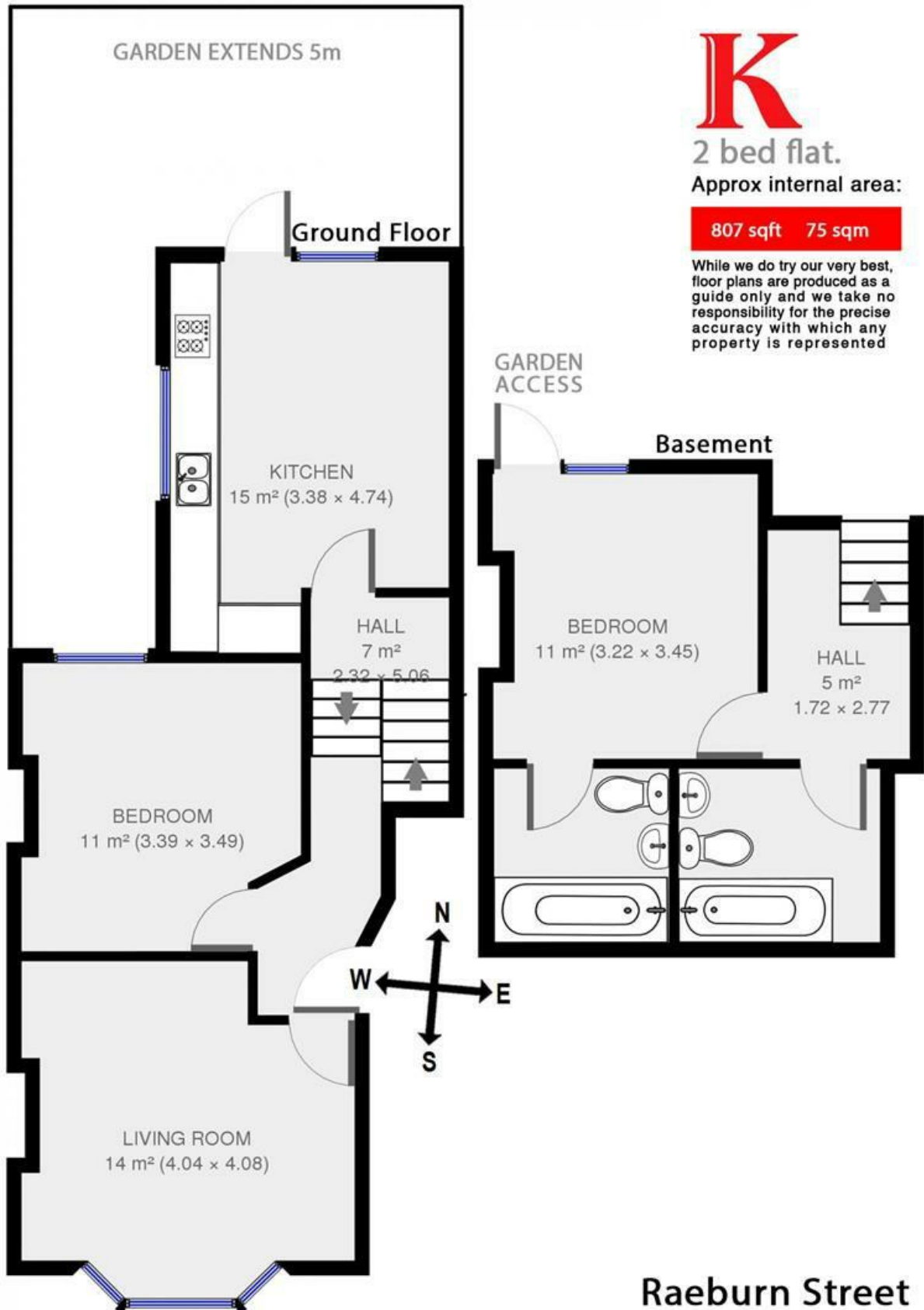
Features

- Two bedroom
- Victorian
- Good transport links
- Furnished
- Split Level
- Light and airy
- Private garden

Council tax band C EPC rating D (65)



Raeburn Street, Brixton, SW2



2 bed flat.

Approx internal area:

807 sqft 75 sqm

While we do try our very best, floor plans are produced as a guide only and we take no responsibility for the precise accuracy with which any property is represented

Raeburn Street

Raeburn Street, Brixton, SW2

