



Maple Close, Clapham, SW4

3 bedroom house - semi-detached for sale

£699,950

Freehold

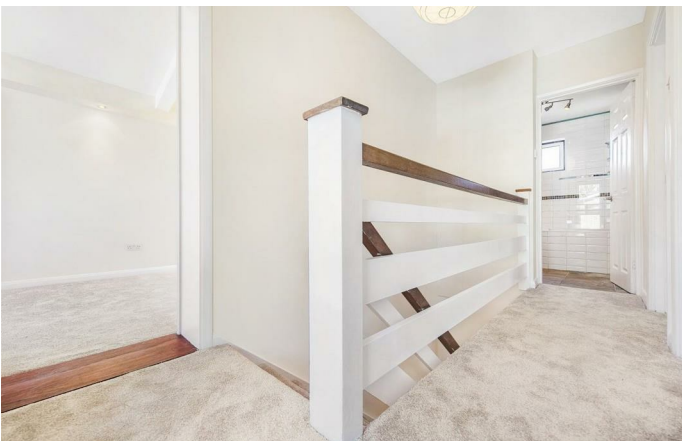
Property Details

A spacious three double bedroom freehold house with a garage, perfectly located close to Abbeville Village and within walking distance to Clapham High Street, Brixton and Balham. Maple Close is a private cul-de-sac, tucked away off leafy Clarence Avenue. The property comprises a spacious reception room, a galley kitchen with a pantry, three comfortable double bedrooms, two bathrooms and a garage. With nearly 1400 square feet of internal space on a private road, a large garage plus a south-west facing garden, the house is a rare find and is sure to appeal to a wide range of purchasers.

Features

- Three double bedrooms
- Chain-free
- Ample storage with access to the loft
- Sought-after location
- Walking distance to the northern and victoria tube lines
- Private road
- Garage
- Freehold

Council tax band E EPC rating D (55)



Maple Close, Clapham, SW4

K

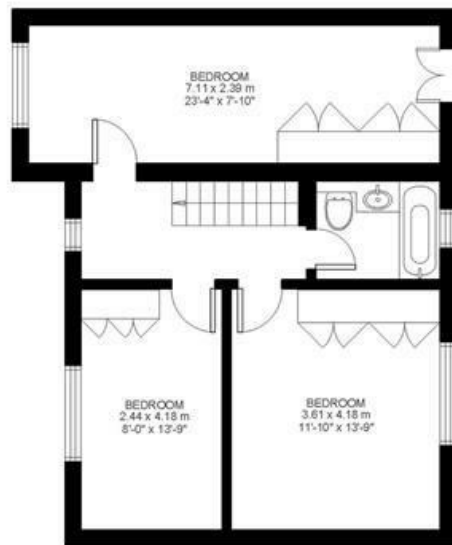
3 Bed House

Approx internal area:

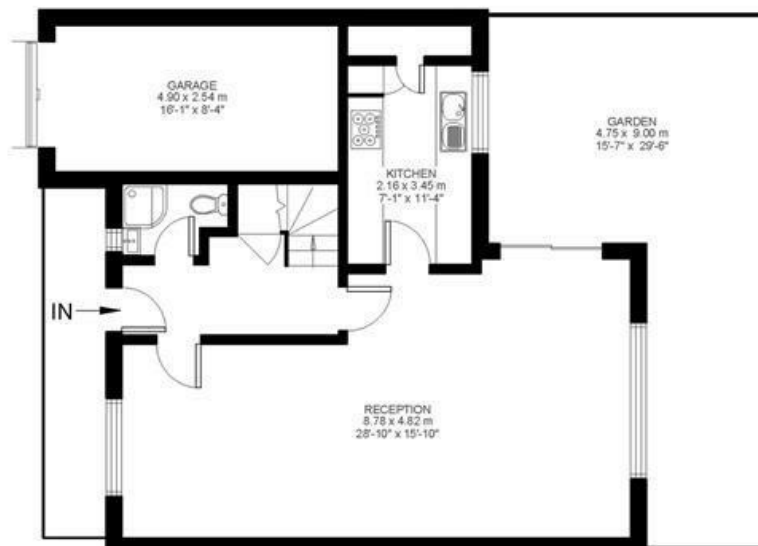
1375 sqft 128 sqm

While we do try our very best, floor plans are produced as a guide only and we take no responsibility for the precise accuracy with which any property is represented

Maple Close



First Floor



Ground Floor



Maple Close, Clapham, SW4

