



**Regis Place, Brixton, SW2**

2 bedroom house - end terrace to let

**£530 Per Week**

Furnished

## Property Details

Keating Estates are proud to present to market this fantastic two double bedroom, two bathroom end-of-terrace house with a private garden and off-street parking, peacefully set back from Acre Lane within a gated mews development. Located within five minutes of the Victoria line and the incredible choice of amenities in central Brixton.

This elegant house is a rare gem packed full of benefits that should not be missed, peacefully position in a central location and will be newly decorated before moving in, highlighting the charming features and bringing this wonderful property to life.

A true heart of the home, the semi-open plan reception room is an expansive space at over ten meters in length, providing cavernous proportions in which to unwind or entertain with a characterful brick fireplace adding to the ambience. The dine-in kitchen boasts plentiful storage within modern cabinetry running down two walls and neatly integrating appliances, catering to both functionality and style. The sweeping curvature of the wall creates the ideal nook for a dining table, with plenty of space for an additional, more formal dining table in the reception if desired.

Large pane patio doors open to the garden, allowing fresh air to breeze through the room whilst providing an easy transition to al-fresco dining in the summer months. The private garden is currently

## Features

- Two double bedrooms
- Two bathrooms
- Private garden
- End-of-terrace freehold house
- Secure gated mews development
- Off-street allocated parking
- Central Brixton a five-minute walk
- Clapham High Street a twelve-minute stroll
- Victoria and Northern lines

Council tax band E      EPC rating C (69)

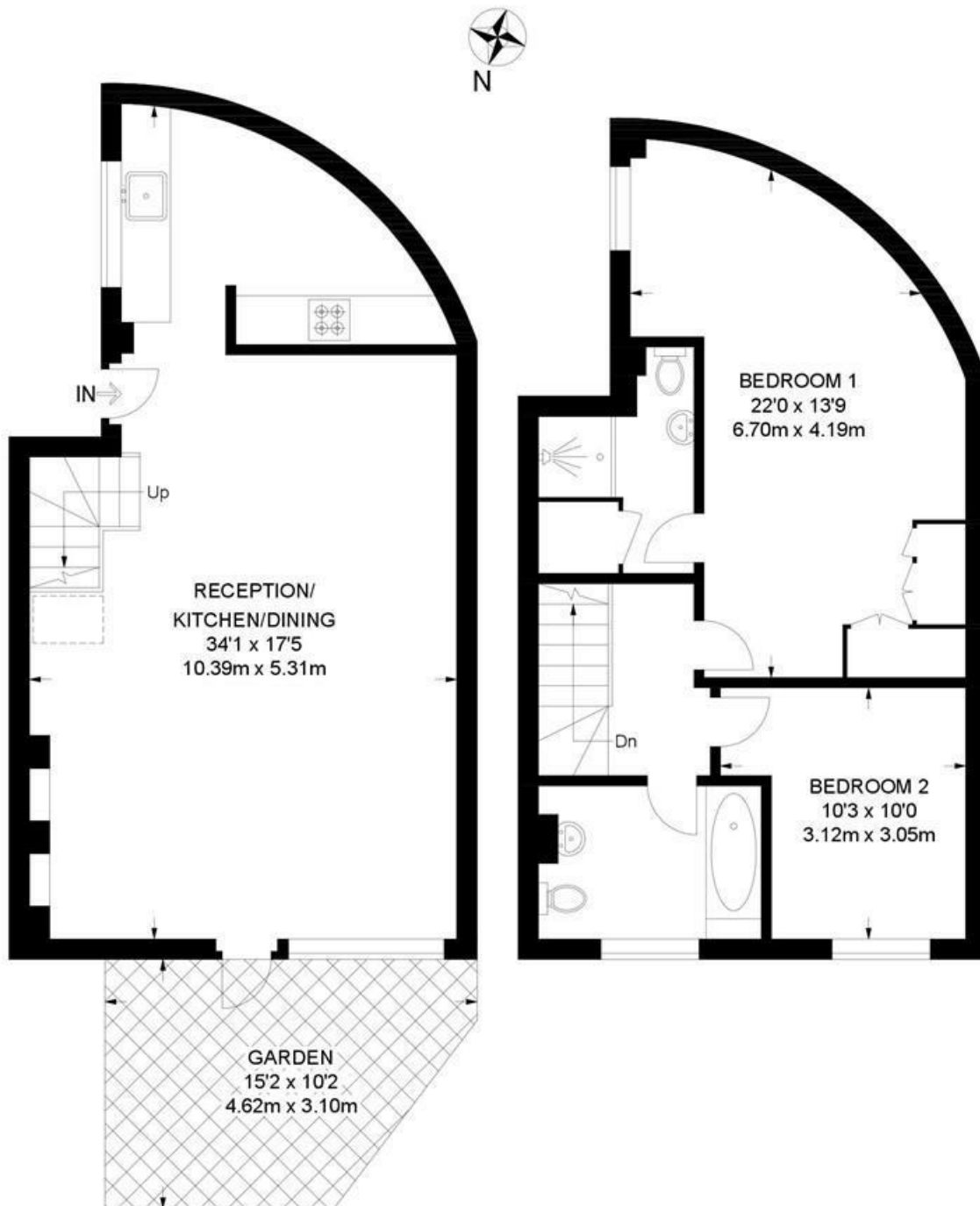




Regis Place, Brixton, SW2

**Regis Place, SW2**  
**2 Bedroom Flat**

APPROXIMATE GROSS INTERNAL AREA: 992 SQ FT / 92.1 SQ M



While we try our very best, floor plans are produced as a guide only and we take no responsibility for the precise accuracy with which any property is represented.



Regis Place, Brixton, SW2

