



**Medwin Street, Brixton, SW4**

2 bedroom maisonette for sale

**£650,000**

Leasehold

## Property Details

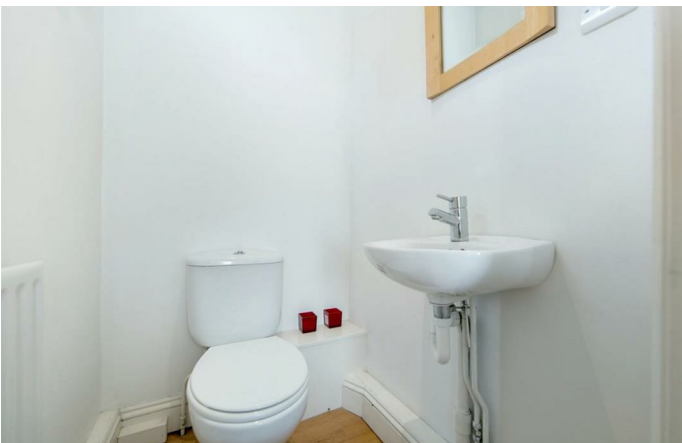
An enticing two-bedroom split-level maisonette with a private roof terrace, set within a charming Victorian property. With over 870 square feet split over two floors, this spacious property feels like home from the moment you step inside the private entrance. The heart of the home is the inviting reception with high ceilings and large windows, enhancing the airy ambience. Double doors connect to the kitchen, offering flexibility for entertaining or creating separate spaces when desired. Adjacent is a convenient downstairs WC, ideal for guests. A standout feature is the private roof terrace, accessible from the kitchen—perfect for al-fresco dining and soaking up the sun during summer. Upstairs, two impressive double bedrooms offer generous space and storage, a rarity in period properties. A well-proportioned family bathroom separates the bedrooms enhancing privacy, the bathroom features a bathtub with an overhead shower. Neutrally presented throughout, this fantastic home provides a blank canvas to personalise to your taste. A prime location with excellent transport links and vibrant local amenities completes this appealing offering.

## Features

- Two double bedrooms
- Private roof terrace
- Split-level Victorian Conversion
- Own front door
- Exciting opportunity to add your own stamp
- Central Brixton a six-minute stroll
- Clapham High street a nine-minute walk
- Victoria and Northern lines
- Chain-free
- Share of freehold will be granted

Council tax band D

EPC rating D (57)





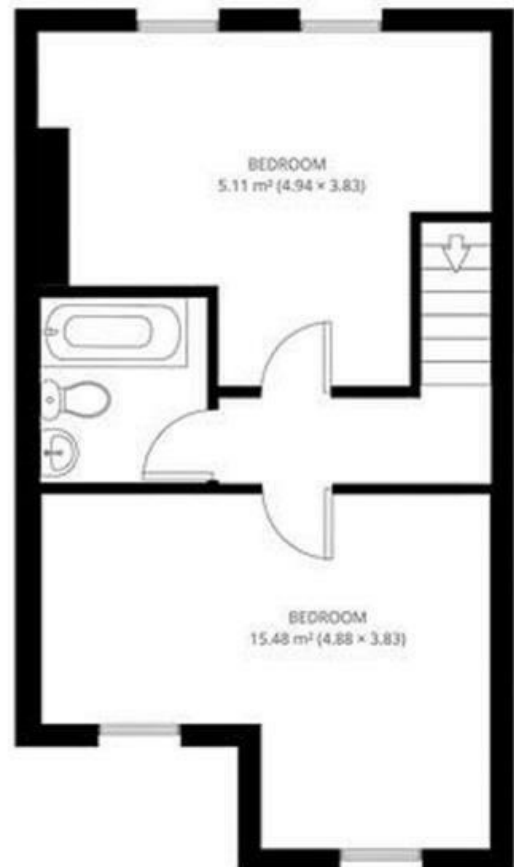
Medwin Street, Brixton, SW4

## Medwin Street, SW4 2 Bedroom Maisonette

APPROXIMATE GROSS INTERNAL AREA: 872 SQ FT / 81 SQ M



GROUND FLOOR



FIRST FLOOR



While we try our very best, floor plans are produced as a guide only and we take no responsibility for the precise accuracy with which any property is represented.

Medwin Street, Brixton, SW4

