



Sainfoin Road, Balham, SW17

1 bedroom flat for sale

£435,000

Leasehold

Property Details

A bright and airy one double bedroom flat, nestled on the top floor of an end-of-terrace Victorian property, a short stroll to the Northern Line and both Tooting Bec and Balham High Streets. A complete blank canvas, the apartment is ready to move into straight away yet with the potential to add your own touches over time, enhancing the lovely features and bringing the home to life. Set to the upper floors the home benefits from a bright and private ambience throughout. The stunning open plan kitchen reception is spacious with plenty of character and room for a dining area and living area, ideal for entertaining or simply unwinding. The kitchen neatly wraps around, maximising storage and worktop space. Multiple skylights and windows allow plenty of natural light to flood in whilst the lofty ceilings add to the charm. Down a small flight of stairs you find the spacious double bedroom, peacefully set to the rear of the home with a tranquil ambience and plenty of space for storage options. Adjacent, the neutral bathroom is equipped with a shower over the bath, ideal for a soak in the bubbles with starry views through the skylight.

Features

- One double bedroom
- Victorian end of terrace conversion
- Recently redecorated
- Bright and airy
- Balham High Street a seven-minute stroll
- Tooting Bec an eight-minute walk
- The Common a ten-minute walk
- Northern Tube Line and trains
- Chain-free
- A share of freehold will be granted

Council tax band C

EPC rating D (57)

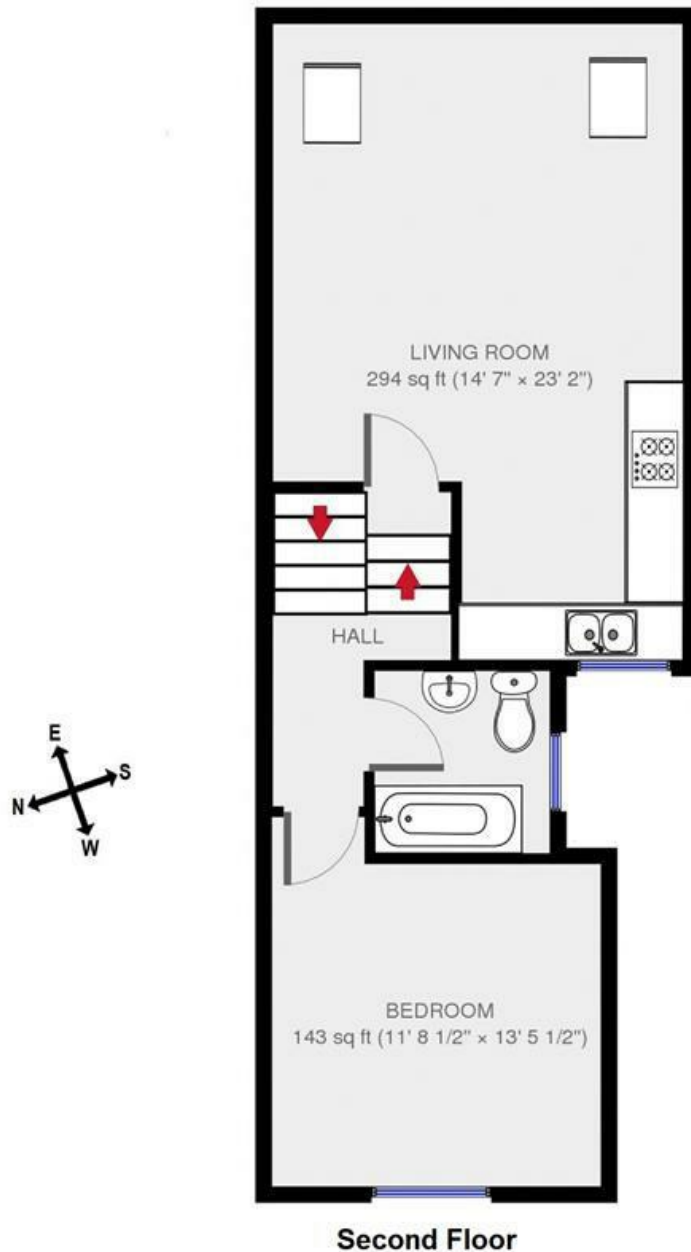


Sainfoin Road, Balham, SW17

Sainfoin Road, SW17

1 Bedroom Flat

APPROXIMATE GROSS INTERNAL AREA: **542 SQ FT / 50 SQ M**



While we try our very best, floor plans are produced as a guide only and we take no responsibility for the precise accuracy with which any property is represented.

Sainfoin Road, Balham, SW17

