



Sudbourne Road, Brixton, SW2

£385,000

1 bedroom flat - conversion for sale

Share of Freehold

Property Details

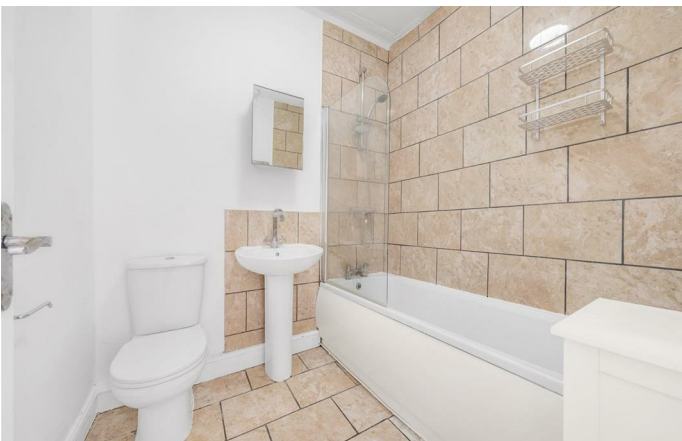
A charming and chain-free one bedroom apartment set over the first floor of a handsome semi-detached Victorian house on a leafy residential street quietly tucked off Brixton Hill. Bathed in natural light with high ceilings and verdant outlooks, this beautifully presented home enjoys an elevated, peaceful position—ideal for first-time buyers or as a stylish London base. The well-considered layout maximises space, with each room flowing seamlessly. The elegant reception room sits centrally, offering a tranquil environment for relaxation or working from home, with a large sash window framing views over mature surrounding gardens. The bright kitchen at the rear features shaker-style cabinetry with copper handles, light worktops, and a leafy outlook, combining practicality with design flair. The spacious double bedroom is flooded with light through two arched sash windows, enhanced by alcove storage and stylish deep-blue accents. A tastefully finished bathroom completes the property, fitted with a full-sized bath and overhead shower.

Council tax band B

EPC rating D (59)

Features

- One double bedroom
- Semi-detached Victorian conversion
- Bright and airy
- Beautifully presented
- Local amenities of Acre Lane and Brixton Hill
- Central Brixton a ten-minute stroll
- Clapham High Street a fourteen-minute walk
- Victoria and Northern lines
- Share of freehold
- Chain-free

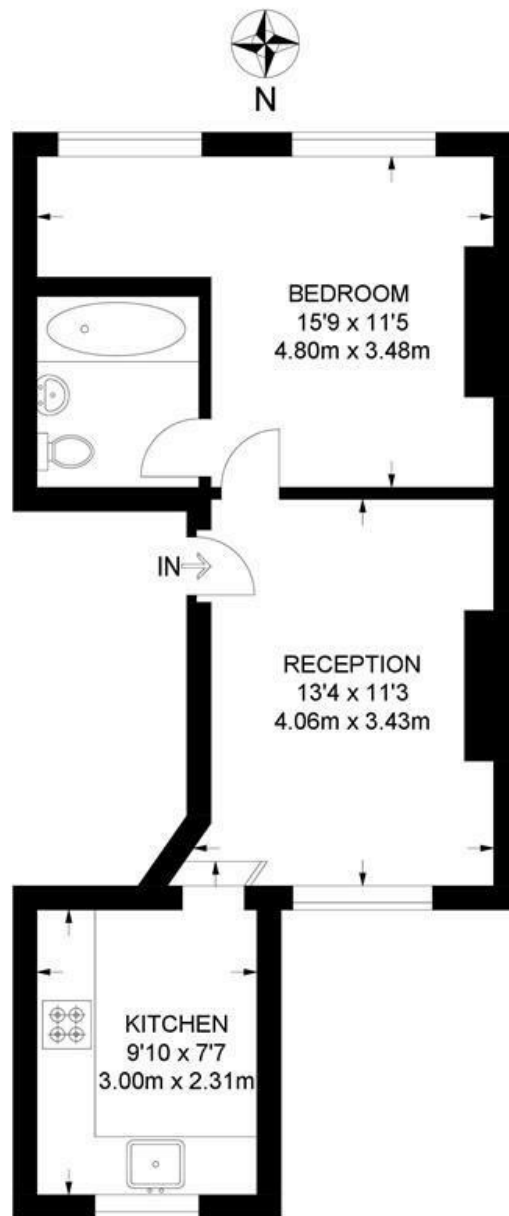


Sudbourne Road, Brixton, SW2

Sudbourne Road, SW2

1 Bedroom Flat

APPROXIMATE GROSS INTERNAL AREA: **393 SQ FT / 36.5 SQ M**



FIRST FLOOR



While we try our very best, floor plans are produced as a guide only and we take no responsibility for the precise accuracy with which any property is represented.

Sudbourne Road, Brixton, SW2

