



Doverfield Road, Brixton, SW2

3 bedroom flat to let

£507 Per Week

Furnished

Property Details

NO HMO - only suitable for single occupant, max two sharers, couple or single family unit tenancy.

A newly decorated split level two double bedroom flat with a charming rear garden and a fantastic open-plan living space. This property, located within a popular residential pocket of Brixton Hill has an attractive period façade and sits virtually equidistant to both Brixton and Clapham, appealing to tenants contemplating both of these sought-after areas.

The reception room is spacious and a comfortable dedicated living space, creating a sociable and airy reception room. The generous master bedroom is spacious, and the second bedroom is also a sizeable double. The additional spare room adds extra value for those tenants who work from home or need some extra space. A contemporary bathroom and a garden for those lovely summer months to enjoy completes this fantastic flat.

The flat is a short walk from Brixton and all that the areas have to offer. Brockwell Park is within close proximity and a wide selection of local transport links which include Brixton tube and rail station (a fifteen-minute walk) and numerous bus links which take you down the hill to Brixton tube within a few minutes and then through and onto Central London. Just around the corner is the lovely Elm Park Tavern and it is only a short stroll to the celebrated amenities in Herne Hill. The diverse Clapham High

Features

- Two Bedrooms
- Additional study room
- Garden
- Newly decorated
- Close to Transport Links
- Close to Central Brixton

Council tax band D **EPC rating E (53)**



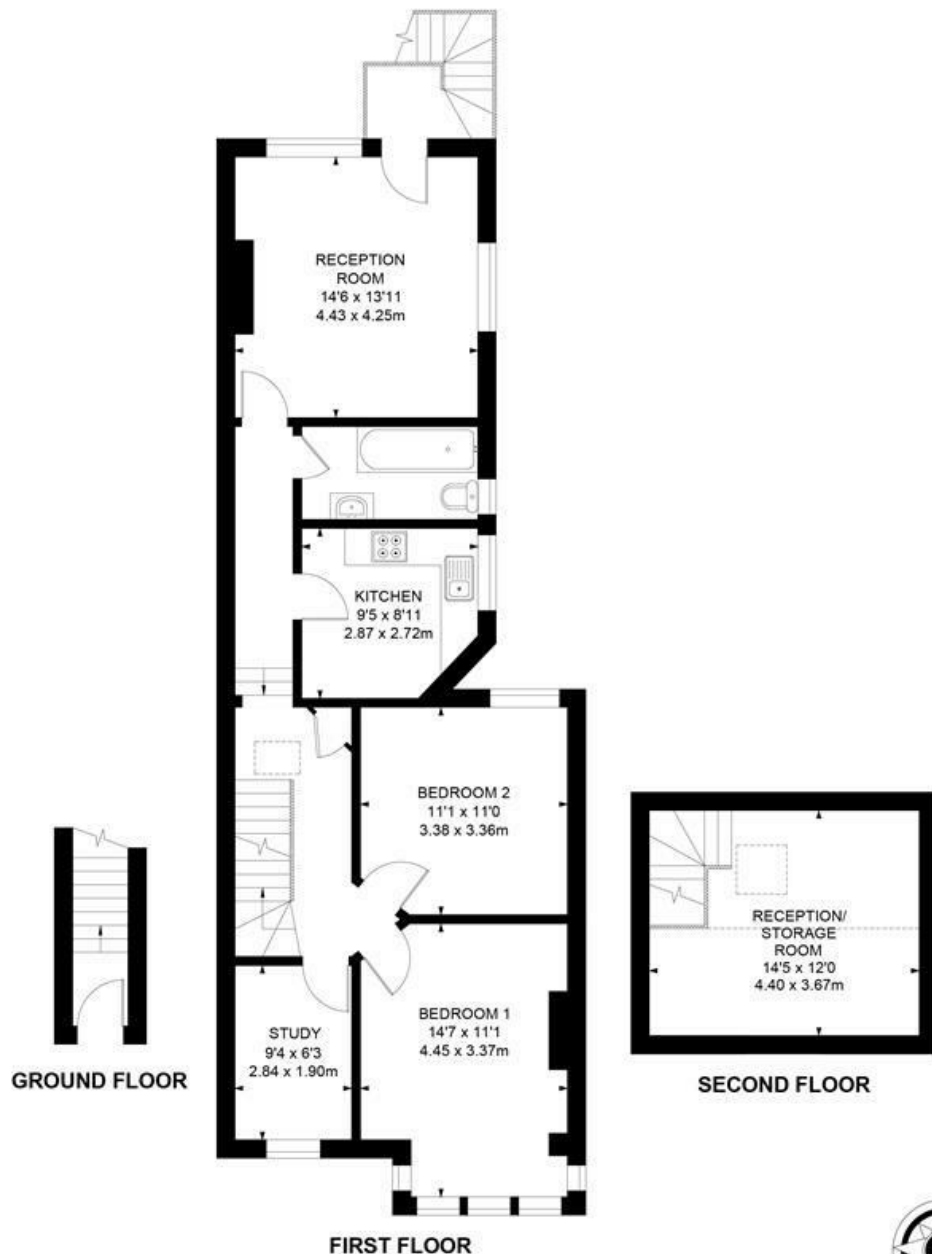
Doverfield Road, Brixton, SW2

Doverfield Road, SW2

4 Bedroom Flat

APPROXIMATE GROSS INTERNAL AREA :

1016 SQ FT / 94.41 SQ M



While we try our very best, floor plans are produced as a guide only and we take no responsibility for the precise accuracy with which any property is represented.



Doverfield Road, Brixton, SW2

