



Drewstead Road, Streatham, SW16

null bedroom flat - studio to let

£288 Per Week

Part furnished

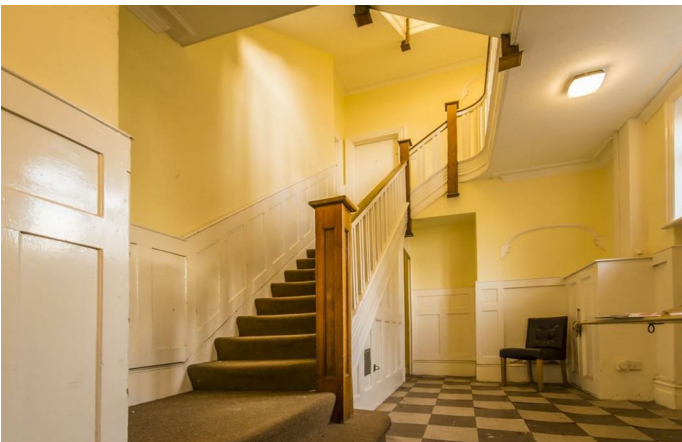
Property Details

This bright, airy studio is as large as many one bed flats and is set in this elegant town house on a corner plot in leafy Streatham. The property comprises a lovely kitchen, separated from the rest of the reception room with a large breakfast bar, a separate living area, and a large bedroom with a massive window seat that can be curtained off from the rest of the space. There is a separate entrance hall, off which leads a large bathroom. The property is a couple of minutes from Streatham Hill station, and all that Streatham has to offer as well as being a 5 min walk from the lovely Tooting Common.

Features

- Light and airy
- Studio flat
- Close to Tooting Common
- Close to Streatham Hill Station

Council tax band A EPC rating D (56)



Drewstead Road, Streatham, SW16

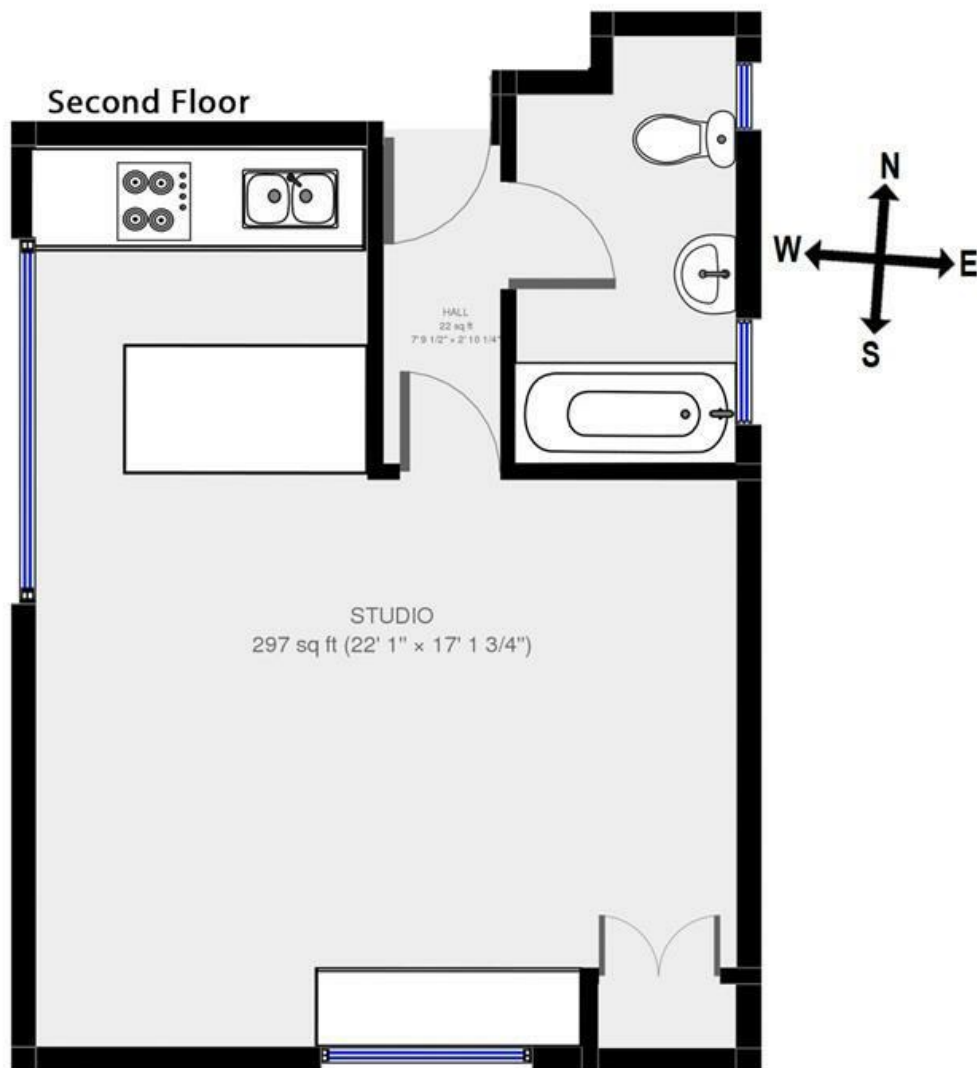


Studio Flat.

Approx internal area:

418sqft 39sqm

While we do try our very best, floor plans are produced as a guide only and we take no responsibility for the precise accuracy with which any property is represented



Drewstead Road, Streatham, SW16

