



Canterbury Crescent, SW9

2 bedroom flat - purpose built for sale

£585,000

Leasehold

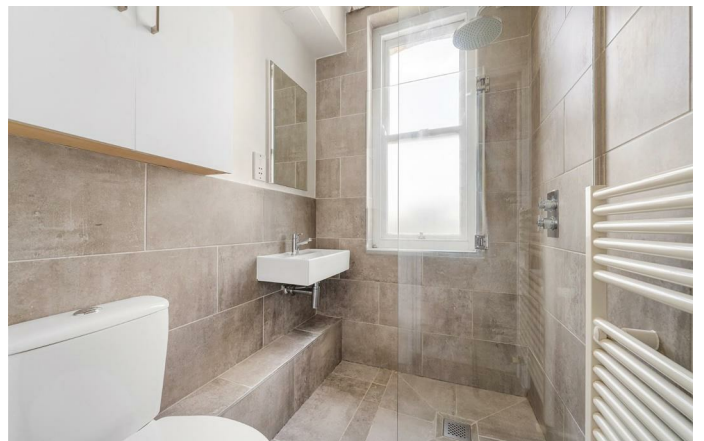
Property Details

This beautifully presented two bedroom, two bathroom apartment is securely set on the third floor of a handsome Victorian mansion block, offering elevated views, abundant natural light, and a superb sense of privacy. Rich in period charm, the semi-open plan reception room is ideal for both relaxing and entertaining, featuring wooden floorboards, a striking double chimney breast with decorative fireplaces, and a built-in window seat beneath three sash windows. The stylish kitchen-diner boasts classic shaker-style cabinetry, generous worktops, and space for a dining table or island—perfect for modern living. Both bedrooms are peacefully positioned to the rear, with plush carpets, built-in wardrobes, and neutral decor. The principal bedroom benefits from a sleek en-suite, while the second bedroom sits next to the main bathroom—ideal for sharers or guests. Additional features include two hallway storage cupboards, secure bike storage in the residents' yard, and high-quality double glazing and sound insulation from a full building renovation 17 years ago. A characterful home moments from Brixton's vibrant restaurants, bars, and transport links.

Features

- Two double bedrooms
- Two bathrooms
- Elegant Victorian mansion building
- Views over the rooftops
- South-facing resident's yard
- Bike storage
- Situated in the heart of Brixton
- A rich variety of local amenities including Brixton Village
- Victoria Line and Overground both a four-minute walk
- Share of freehold. Chain-free

Council tax band C EPC rating C (75)

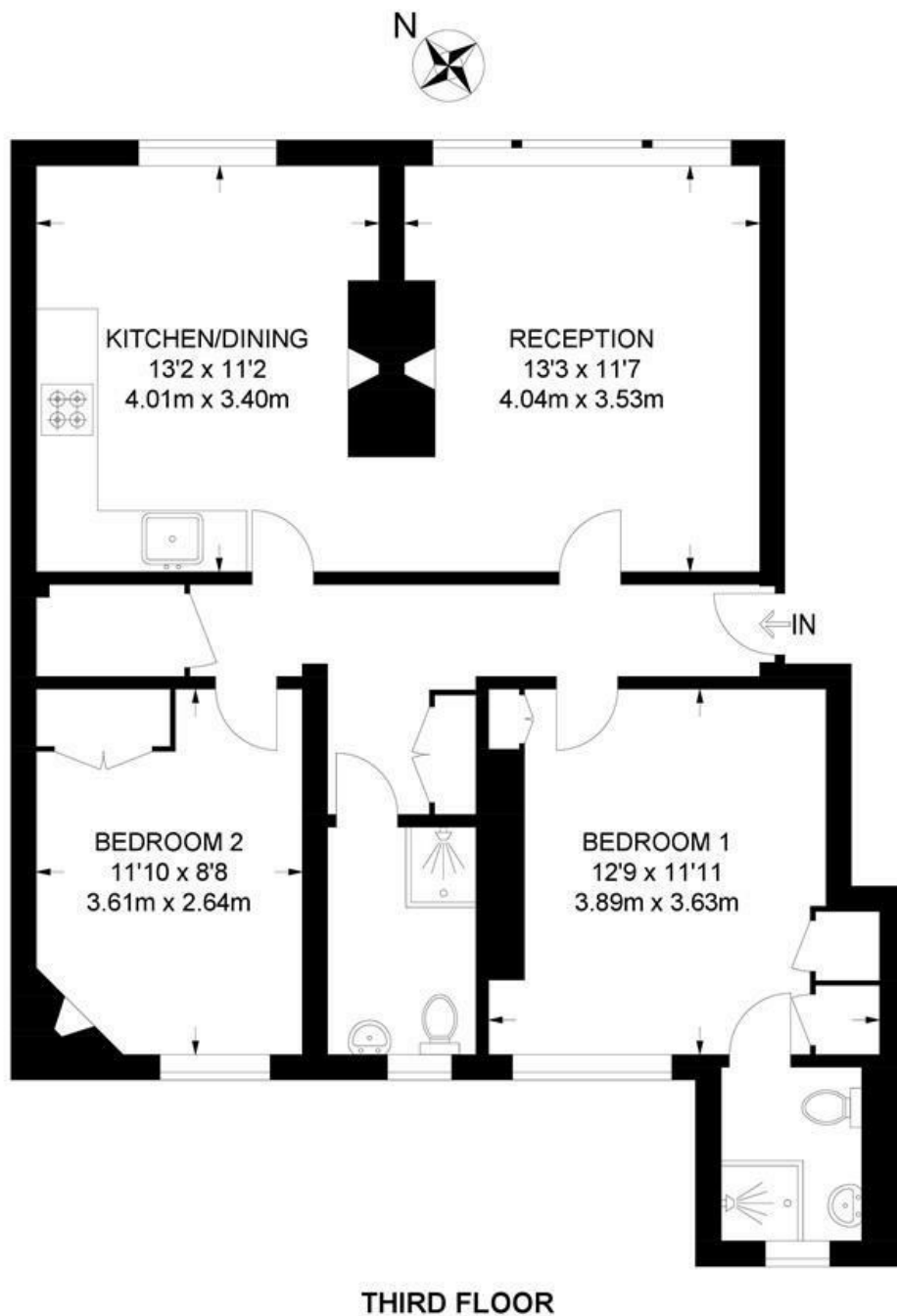




Canterbury Crescent, SW9

Canterbury Crescent, SW9 2 Bedroom Flat

APPROXIMATE GROSS INTERNAL AREA: **749 SQ FT / 69.6 SQ M**



While we try our very best, floor plans are produced as a guide only and we take no responsibility for the precise accuracy with which any property is represented.

Canterbury Crescent, SW9

