



## Canterbury Crescent, Brixton, SW9

2 bedroom flat - conversion for sale

**£585,000**

Leasehold

### Property Details

An appealing two double bedroom, two bathroom apartment, securely positioned on the second floor of a handsome Victorian mansion block, ideally situated just moments from the bustling centre of Brixton. Beautifully arranged, the property enjoys generous proportions and a bright, airy feel throughout. Set back from the road the home maintains a sense of privacy while remaining moments from Brixton's vibrant amenities. The charming semi-open plan reception is bathed in natural light, featuring a bay window, cosy carpets, and a decorative chimney breast dividing living and dining areas. Elegant double doors flow into a spacious hallway, enhancing the sense of space. The stylish kitchen is thoughtfully designed with sleek gloss cabinetry, warm wooden worktops, and a striking turquoise splashback. Both bedrooms are quietly positioned to the rear, each with built-in wardrobes; the principal benefits from a contemporary en-suite. A modern family bathroom and generous storage complete the home, with access to a residents' yard and bike storage. The building was comprehensively renovated 18 years ago to a high standard, blending period elegance with modern comfort.

### Features

- Two double bedrooms
- Two bathrooms
- Elegant Victorian mansion building
- South-facing resident's yard
- Bike storage
- Situated in the heart of Brixton
- A rich variety of local amenities including Brixton Village
- Victoria Line and Overground both a four-minute walk
- Share of freehold
- Chain-free

Council tax band C    EPC rating C (77)

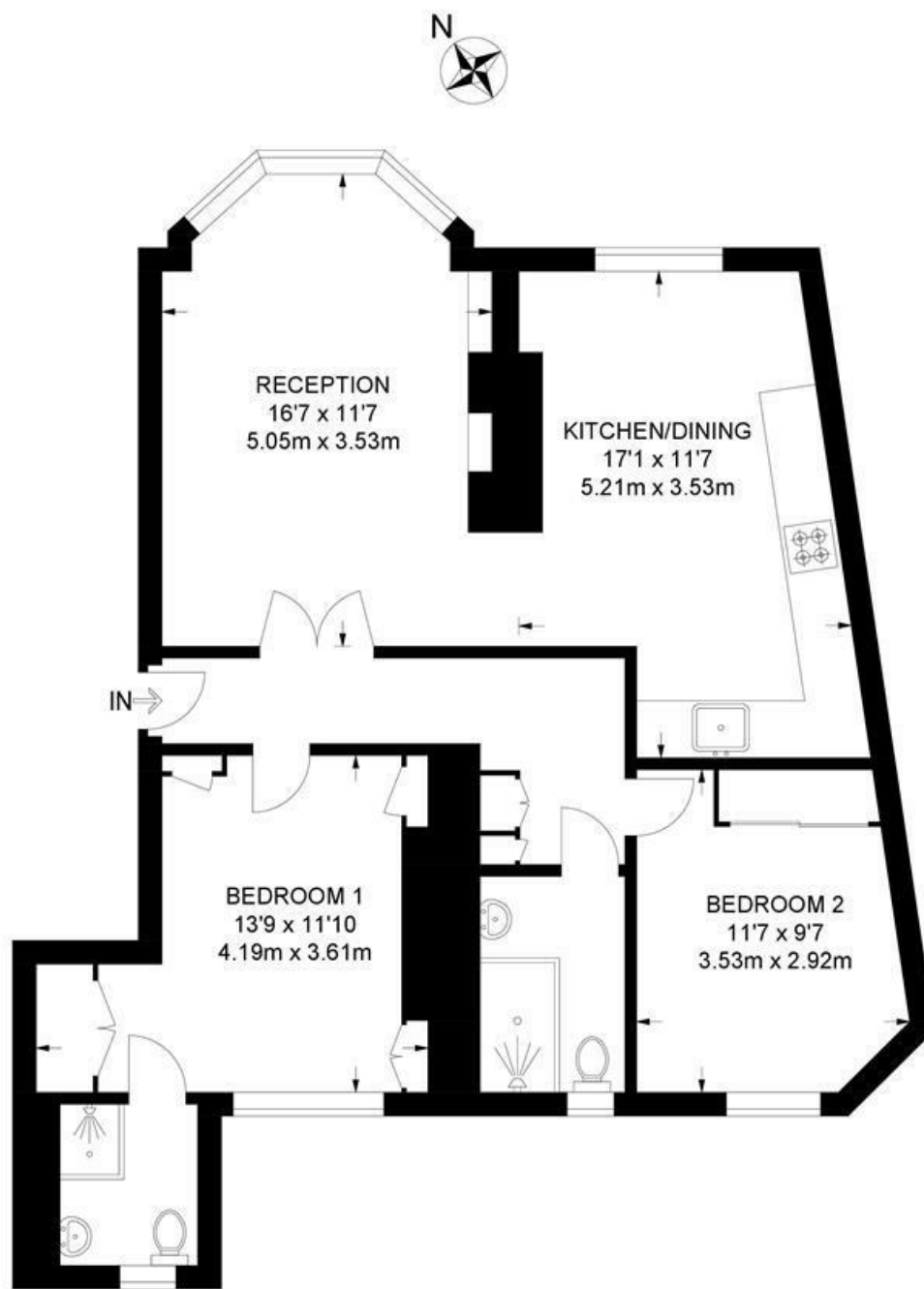




Canterbury Crescent, Brixton, SW9

**Canterbury Crescent, SW9**  
**2 Bedroom Flat**

APPROXIMATE GROSS INTERNAL AREA: **782 SQ FT / 72.6 SQ M**



**SECOND FLOOR**



While we try our very best, floor plans are produced as a guide only and we take no responsibility for the precise accuracy with which any property is represented.

Canterbury Crescent, Brixton, SW9

