



## Mervan Road, Brixton, SW2

2 bedroom flat to let

**£496 Per Week**

Part furnished

### Property Details

This exceptional Victorian conversion flat occupies the upper floors of one of the pretty terraced houses in Mervan Road, situated between Brixton and Herne Hill. There are two comfortable double bedrooms on the first floor, with the master bedroom benefiting from an en-suite bathroom. The main bathroom is modern and stairs lead up to an open plan reception and kitchen with built-in storage. This loft-style reception has ample room to both relax and dine. The kitchen is contemporary with a breakfast bar and easy access to the dining table which fits perfectly into the room. The property benefits from a lovely South facing roof terrace which offers a wonderfully private and secluded outdoor entertaining space. It is located a short walk from all the amenities in both Brixton and Herne Hill. Brixton tube station (Victoria Line) is within a five-minute walk and Herne Hill is a seven-minute walk in the other direction.

### Features

- Two double bedrooms
- Victorian
- Split-level
- Roof terrace
- Period conversion
- Close to Brockwell Park
- Close to Central Brixton

Council tax band C      EPC rating C (76)



Mervan Road, Brixton, SW2

## Mervan Road

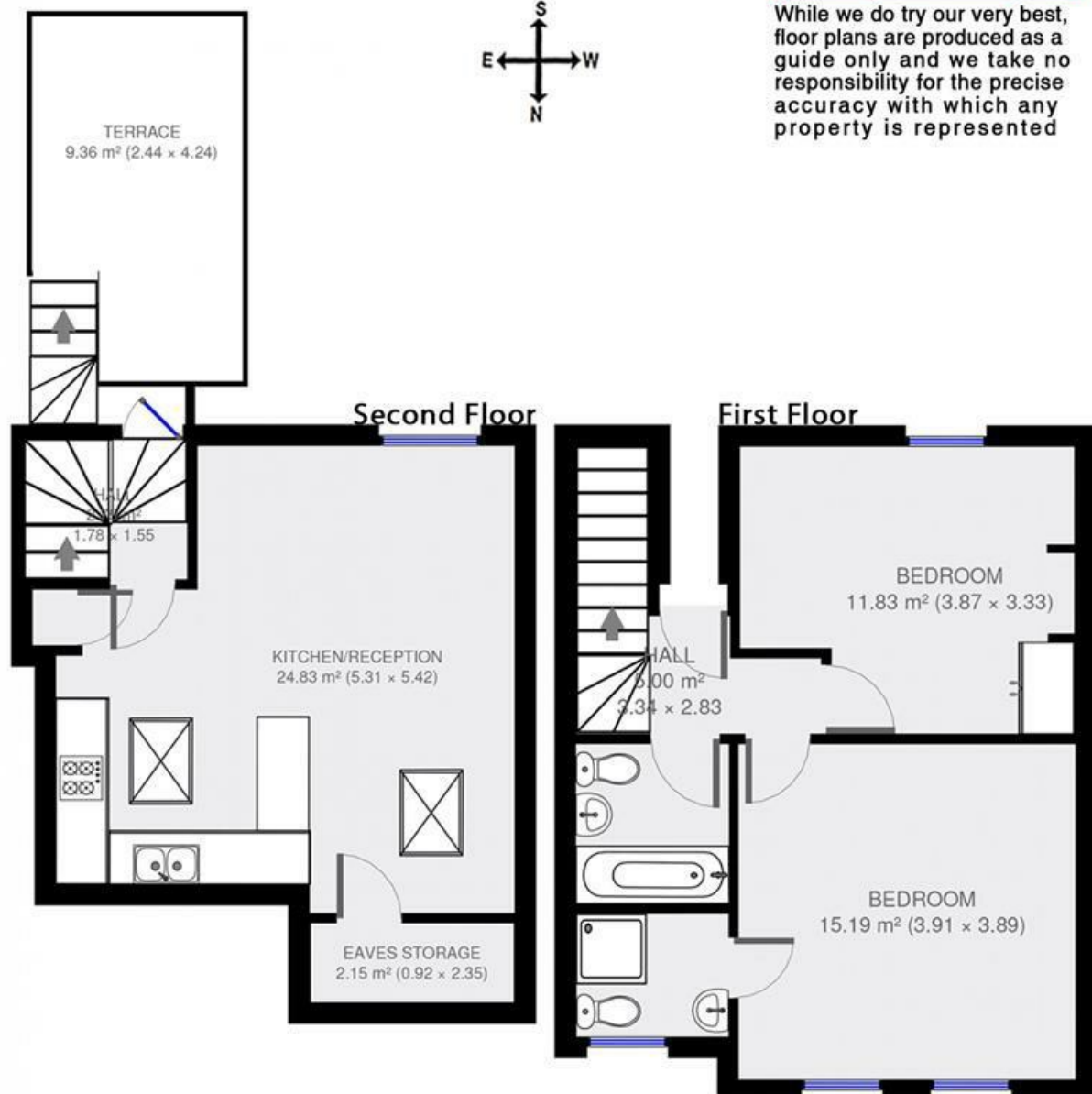
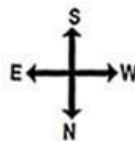


2 bed Flat.

Approx internal area:

**800 sqft 74.4 sqm**

While we do try our very best, floor plans are produced as a guide only and we take no responsibility for the precise accuracy with which any property is represented





Mervan Road, Brixton, SW2

