



## Crescent Grove, Clapham, SW4

1 bedroom flat - purpose built for sale

**£450,000**

Share of Freehold

### Property Details

Located on Crescent Grove, a highly sought-after private road directly opposite Clapham Common, this second floor flat is light and airy, with a spacious reception room that's perfect for relaxing or entertaining, and also offers space for a desk. The galley kitchen is modern and fully equipped with plentiful surface and storage space. The bedroom is a very generous size, benefitting from a quiet positioning within the building and an abundance of natural light, while the modern bathroom has a clean, contemporary feel. Clapham Common is just over the road, offering over 200 acres of beautiful parkland where potential purchasers can an escape from the hustle and bustle of city life, right on the doorstep. Crescent Grove is an exclusive private road full of exquisite Georgian townhouses & attractive greenery. Clapham Common Underground Station (Northern Line) and Clapham High Street Overground Station are both just a short walk away, so getting into central London and beyond couldn't be easier. This flat is ideal for anyone looking to live in a quiet, well-connected area, while still being close to the action.

### Features

- One double bedroom
- Well-maintained building
- Bright and airy throughout
- Private road
- Exclusive location
- Opposite Clapham Common
- A stone's throw from Clapham Common tube station
- Chain free

Council tax band      EPC rating C (76)

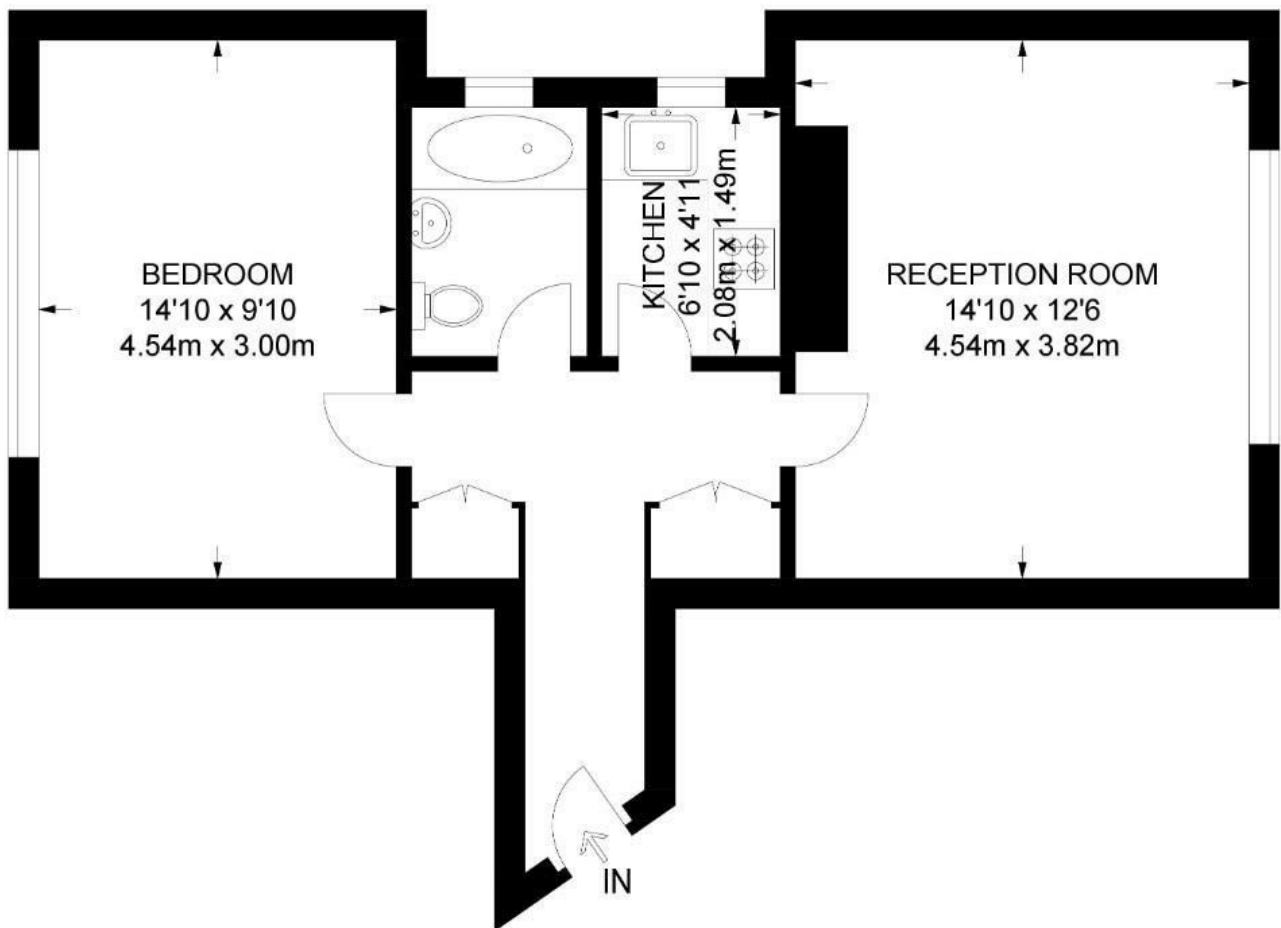




Crescent Grove, Clapham, SW4

## Grove Lodge, SW4 1 Bedroom Flat

APPROXIMATE GROSS INTERNAL AREA: 497 SQ FT / 46.2 SQ M





Crescent Grove, Clapham, SW4

