



**Branksome Road, Brixton, SW2**

1 bedroom flat to let

**£400 Per Week**

Furnished

## Property Details

We are delighted to offer this well presented flat one double bedroom flat, situated in a convenient location only a short distance to local amenities including branded supermarkets pubs, bars and restaurants the choices are endless. The flat comprises of a galley kitchen which leads out onto a spacious open plan reception dining area. There is also a large double bedroom and a great size modern bathroom. Brixton and Clapham town centres are both a short walk away and the extensive bus network on Acre Lane is a thirty second stroll. You will benefit from all the amenities that both areas have to offer, the Northern and Victoria lines within easy reach and the green open spaces of Clapham Common and Brockwell Park.

## Features

- Victorian conversion
- Bright and airy
- Close to transport links
- 11 minute walk to Brixton high street
- One bedroom
- Separate kitchen

Council tax band C      EPC rating C (70)





## Branksome Road

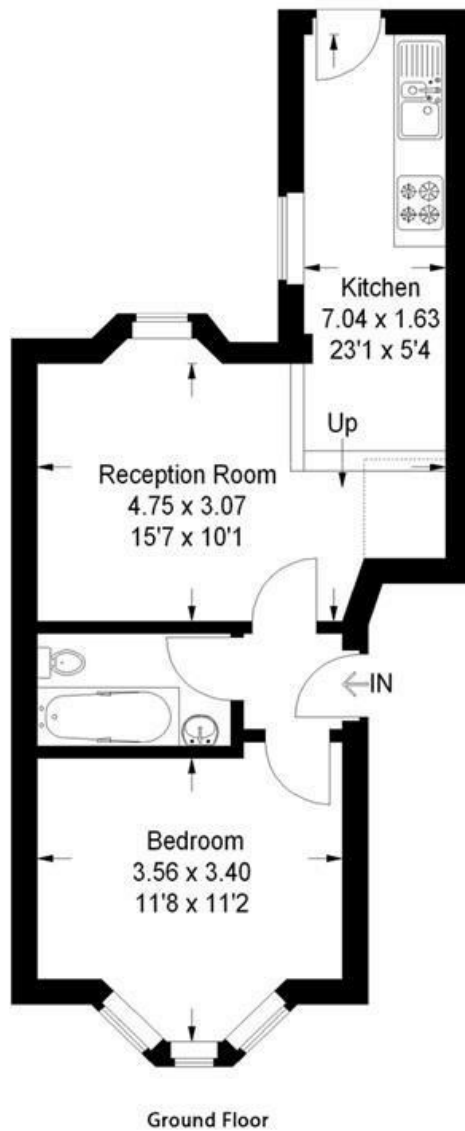
**K**

### 1 Bed Flat

Approx internal area:

**403 sqft 37 sqm**

While we do try our very best, floor plans are produced as a guide only and we take no responsibility for the precise accuracy with which any property is represented





Branksome Road, Brixton, SW2

