



Spenser Road, Herne Hill, SE24

5 bedroom house - end terrace for sale

£1,450,000

Freehold

Property Details

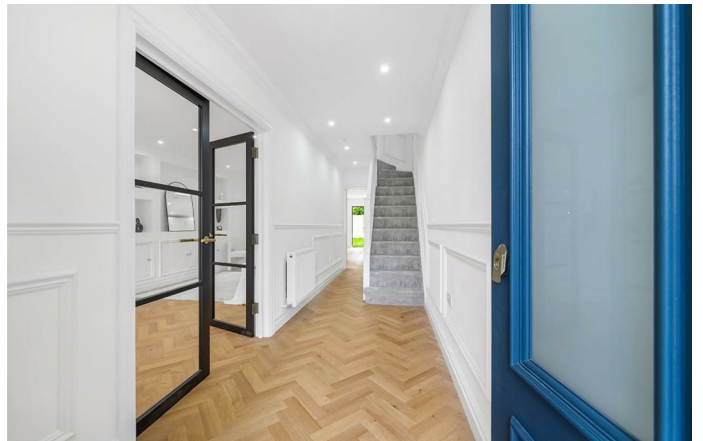
A remarkable five-bedroom Victorian end-of-terrace house within the sought-after Poet's Corner. Set back from the neighbourly street, this home has been luxuriously refurbished within the last 14 months. A double reception boasts entertainment shelving and features of period charm including a bay window. Herringbone flooring sweeps through to the kitchen, allowing the vast living space to flow seamlessly from front to rear and on into the garden, creating a fantastic entertaining space. Dine in elegance with garden views or cook in the superb bespoke kitchen. Contemporary with heritage nods, the integrated kitchen has generous storage down both sides. A sociable island enhances this family hub, providing a more casual dining option. Crittall-style bi-fold doors create a continuous transition to the private garden. This landscaped haven feels worlds away from the bustle of city life, with a lush lawn bordered by raised beds. Five double bedrooms are arranged over the first and second floors, neutrally presented with plush carpets, with two spanning the width of the property. Two family bathrooms feature opulent brass fittings, set against marbled tiles. Occupying the top floor is a versatile loft room, ideal as a home office, artist's studio or yoga space.

Features

- Five double bedrooms plus spacious loft office
- Two bathrooms plus downstairs WC
- Landscaped garden
- Victorian end of terrace house
- Completely renovated within the last 14 months
- Desirably located in Poet's Corner
- Brockwell Park at end of the road
- Herne Hill station in eight minutes
- Central Brixton a seven-minute stroll
- Chain-free. Freehold

Council tax band E

EPC rating D (64)

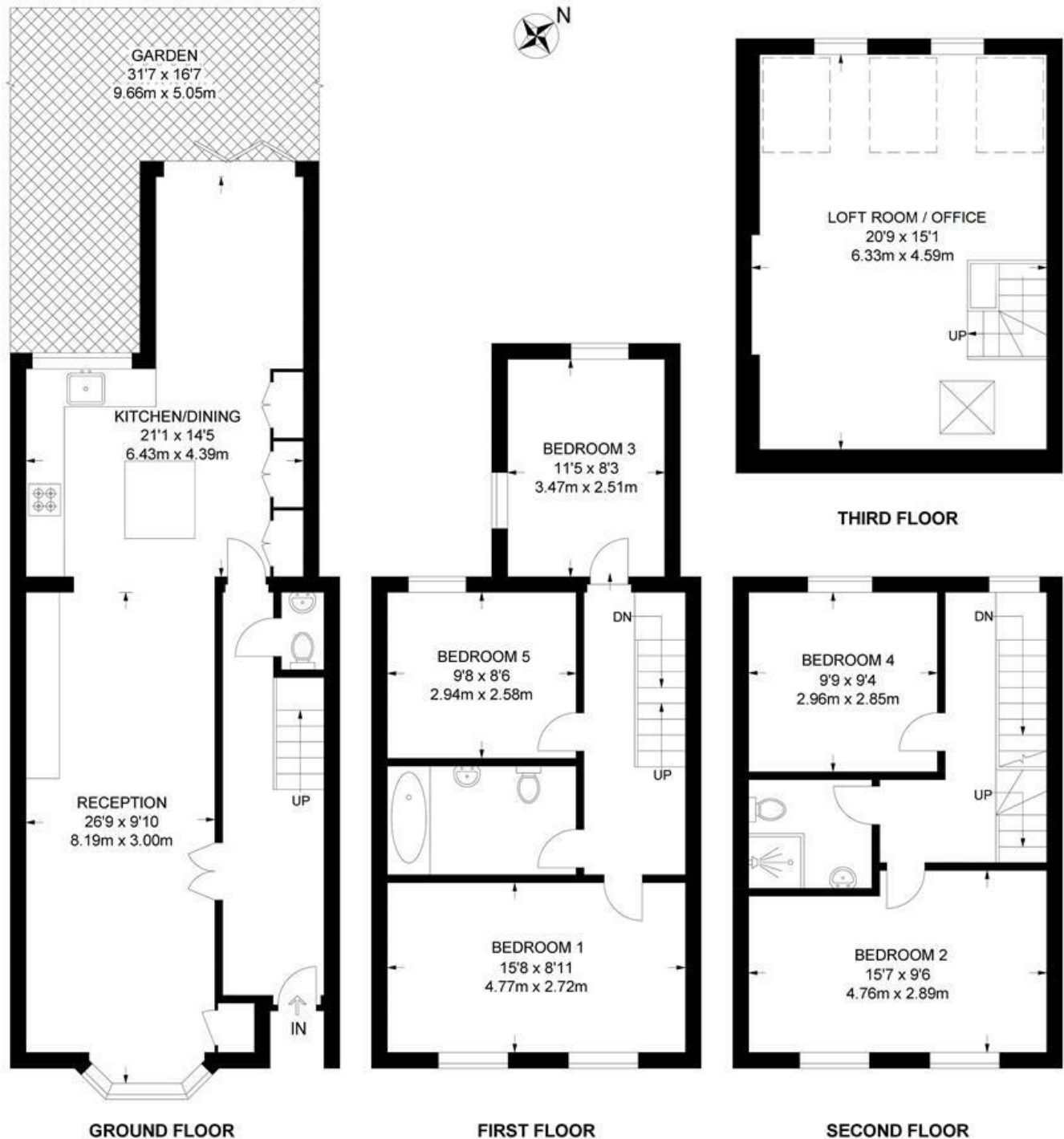




Spenser Road, Herne Hill, SE24

Spenser Road, SE24
5 Bedroom House

APPROXIMATE GROSS INTERNAL AREA: 1768 SQ FT / 164.2 SQ M



While we try our very best, floor plans are produced as a guide only and we take no responsibility for the precise accuracy with which any property is represented.

Spenser Road, Herne Hill, SE24

