

Elm Park, Brixton, SW2

3 bedroom house for sale

£1,050,000

Freehold

Property Details

A beautifully renovated three double bedroom Victorian house with a landscaped private garden, ideally positioned on a quiet residential street. This exceptional home was thoughtfully extended and fully renovated in 2021, blending timeless period character with high-spec contemporary finishes, including underfloor heating throughout the ground floor. The heart of the home is a stunning open-plan kitchen and dining area, illuminated by large skylights and striking tri-fold doors that create a seamless transition to the garden. The kitchen features shaker-style cabinetry, premium appliances, and a central island with breakfast bar. The garden-facing dining area sits below a dramatic waterfall window, ideal for entertaining. The landscaped garden is a peaceful sanctuary with mature planting, outdoor dining area, lighting, and a newly installed tap. The bright living room offers bespoke cabinetry and study area, connecting to a cosy front lounge with plantation shutters and fitted storage. A utility/WC and original staircase complete the ground floor. Upstairs, three double bedrooms and a luxurious family bathroom are finished to a superb standard, creating a stylish and exceptional home.

Council tax band E EPC rating E (40)

Features

- Three double bedrooms
- Bathroom plus downstairs WC
- Landscaped garden
- Victorian house
- Immaculately presented throughout
- Packed with character and contemporary features
- Local parade of shops and cafes moments away
- Sought after street in the LTN
- Short walk to Brockwell Park and central Brixton
- Freehold

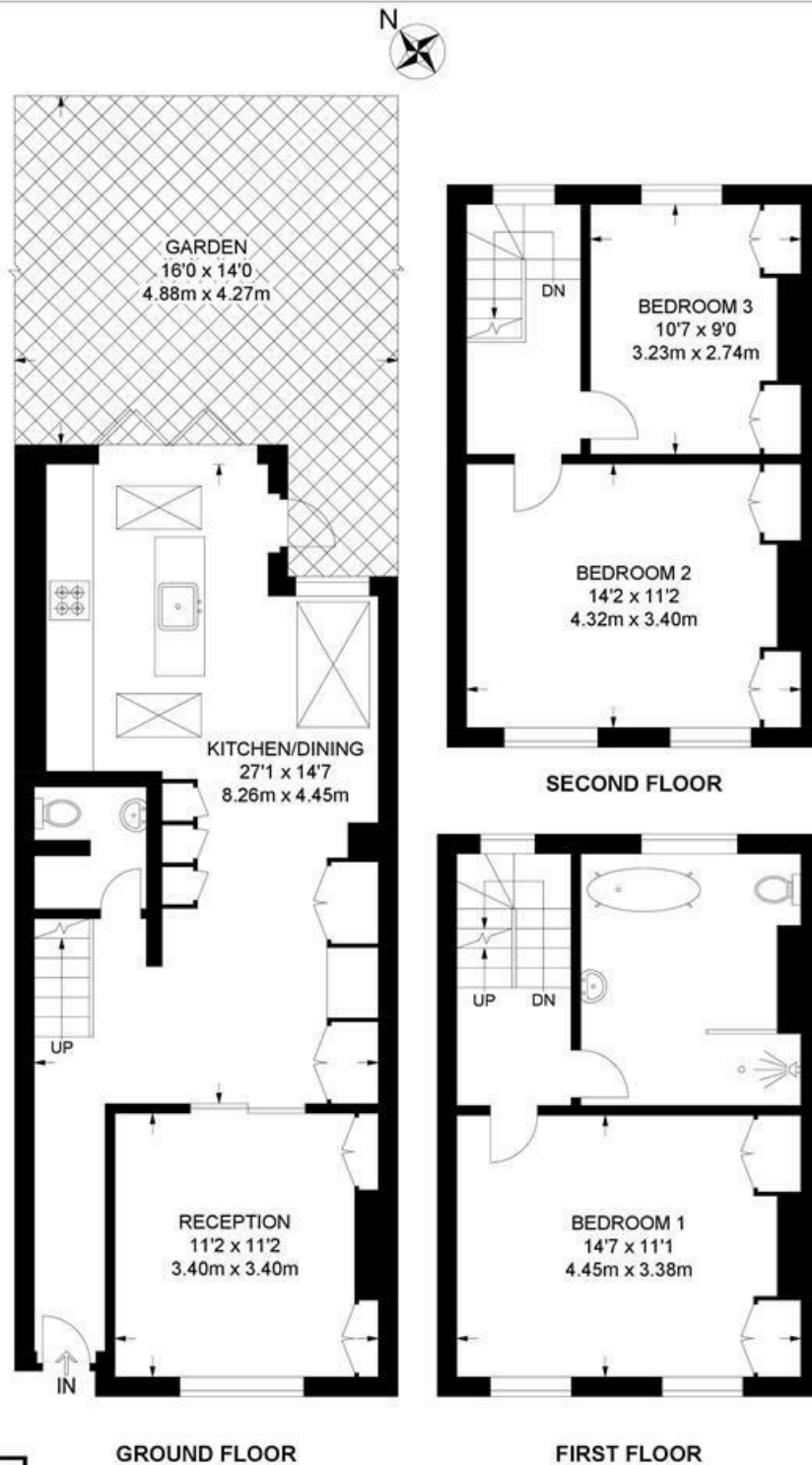




Elm Park, Brixton, SW2

Elm Park, SW2
3 Bedroom House

APPROXIMATE GROSS INTERNAL AREA: 1202 SQ FT / 111.7 SQ M



While we try our very best, floor plans are produced as a guide only and we take no responsibility for the precise accuracy with which any property is represented.

Elm Park, Brixton, SW2

