

Coldharbour Lane, Brixton, SW9

3 bedroom flat - conversion for sale

£635,000

Leasehold

Property Details

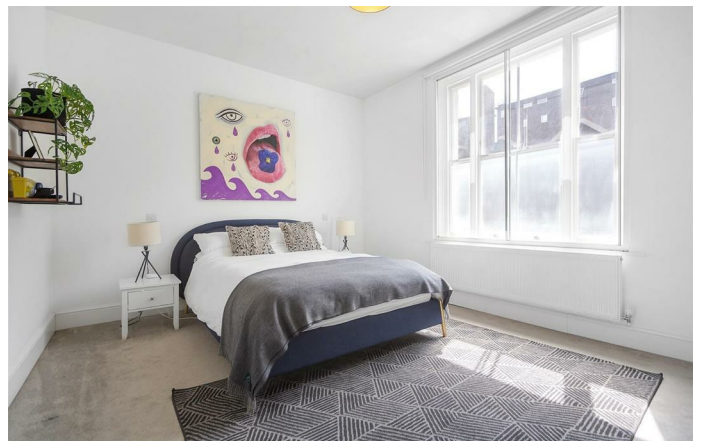
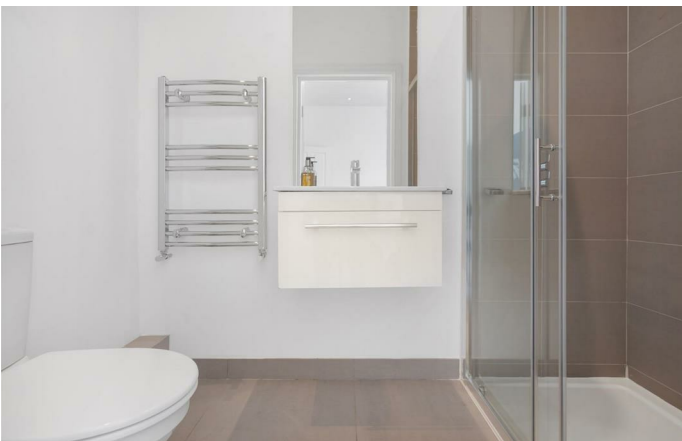
A beautifully finished three bedroom, two bathroom flat split over the first and second floors of a Victorian terrace in the heart of Brixton. Offering over 1,000 square feet of luxurious living space, this split-level home combines modern comfort with classic charm. The open-plan kitchen and reception room is a standout feature, set beneath a skylight that fills the space with natural light. Gloss white cabinetry, crisp worktops, and a breakfast bar under hanging lights create a sociable layout, perfect for casual dining or entertaining. Engineered wooden flooring runs throughout, adding elegance. The largest bedroom spans the width of the first floor, with large windows, bespoke fitted wardrobes, and plush carpeting. The house bathroom offers a luxurious bathtub with an overhead shower and a neatly fitted utility cupboard, keeping the laundry quietly tucked away from the kitchen. Upstairs, two double bedrooms with fitted storage, and the larger of the two boasts an en-suite shower room. The front bedrooms feature secondary glazing to promote a more restful atmosphere.

Features

- Three double bedrooms
- Two bathrooms
- Victorian conversion
- Over 1,000 square feet
- Split over two floors
- Beautifully finished
- Bright and airy
- Located in the heart of Brixton
- Vast array of amenities, eateries and nightlife on the doorstep
- Start of the Victoria Line a short stroll away

Council tax band B

EPC rating D (66)



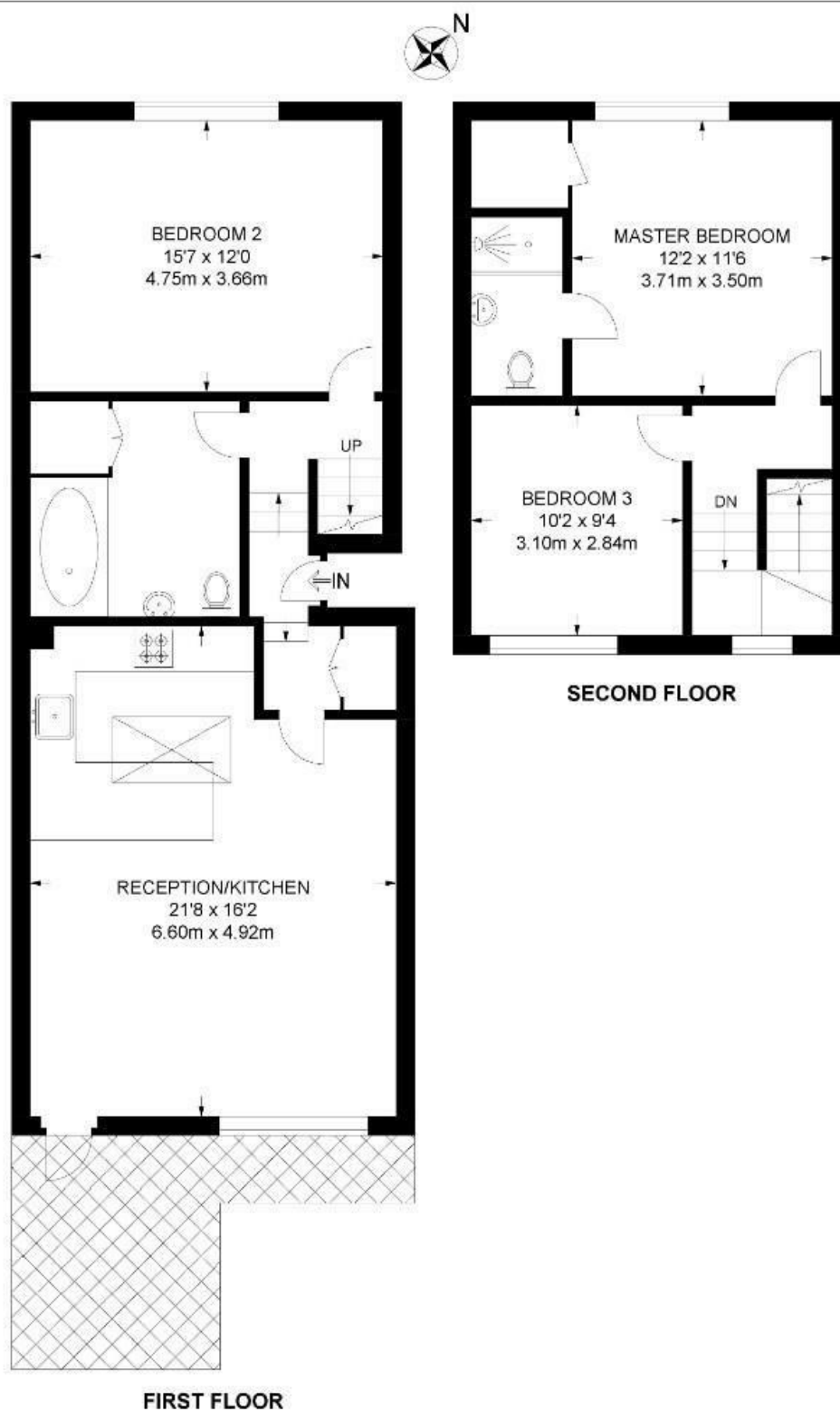


Coldharbour Lane, Brixton, SW9

Coldharbour Lane, SW9

3 Bedroom Flat

APPROXIMATE GROSS INTERNAL AREA: 1045 SQ FT / 97 SQ M



Coldharbour Lane, Brixton, SW9

