

## Stockwell Park Walk, Brixton, SW9

1 bedroom flat - purpose built for sale

£415,000

Leasehold

### Property Details

A pristine one bedroom apartment with a private South-facing terrace off lounge and bedroom. Set in a luxury development this particular apartment is favourably positioned, tucked away on the sixth floor to promote a bright and private ambience. The open plan reception is bathed in light from large-pane windows, a sociable space with built-in speakers and views across the rooftops. The contemporary kitchen boasts generous storage, integrated appliances and worktop lighting. The lovely terrace can be savoured all year round, closing off the bi-folding glass to create a winter garden. Outdoor lighting transitions the terrace into the evenings, maximising the usage of this versatile spot. Also boasting access to the terrace is the tranquil double bedroom with cosy carpets and built-in wardrobes. The spacious bathroom includes a bathtub with overhead shower. There is added storage in deep hallway cupboards. This sociable and secure apartment would make a fantastic first home, complete with underfloor heating and high energy efficiency, reducing bills. Further benefits of this neighbourly development include secure shared bike storage, a communal garden and lift access.

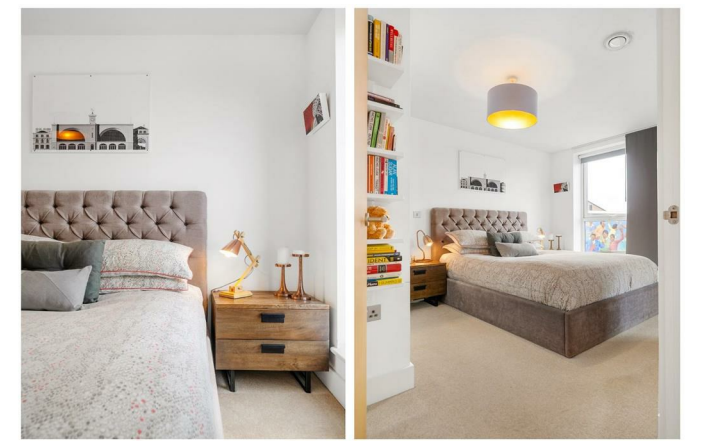
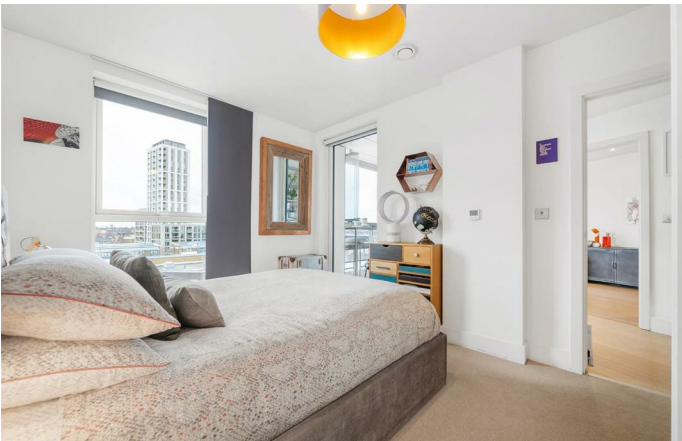
### Features

- One double bedroom
- South-facing private terrace off lounge and bedroom
- Secure modern development
- Bright sixth floor position
- Residents garden and bike storage
- Lift access
- Central location
- Brixton, Stockwell, Clapham triangle
- Short walk to the Victoria and Northern Lines
- Chain-free

Council tax band C

EPC rating B (84)







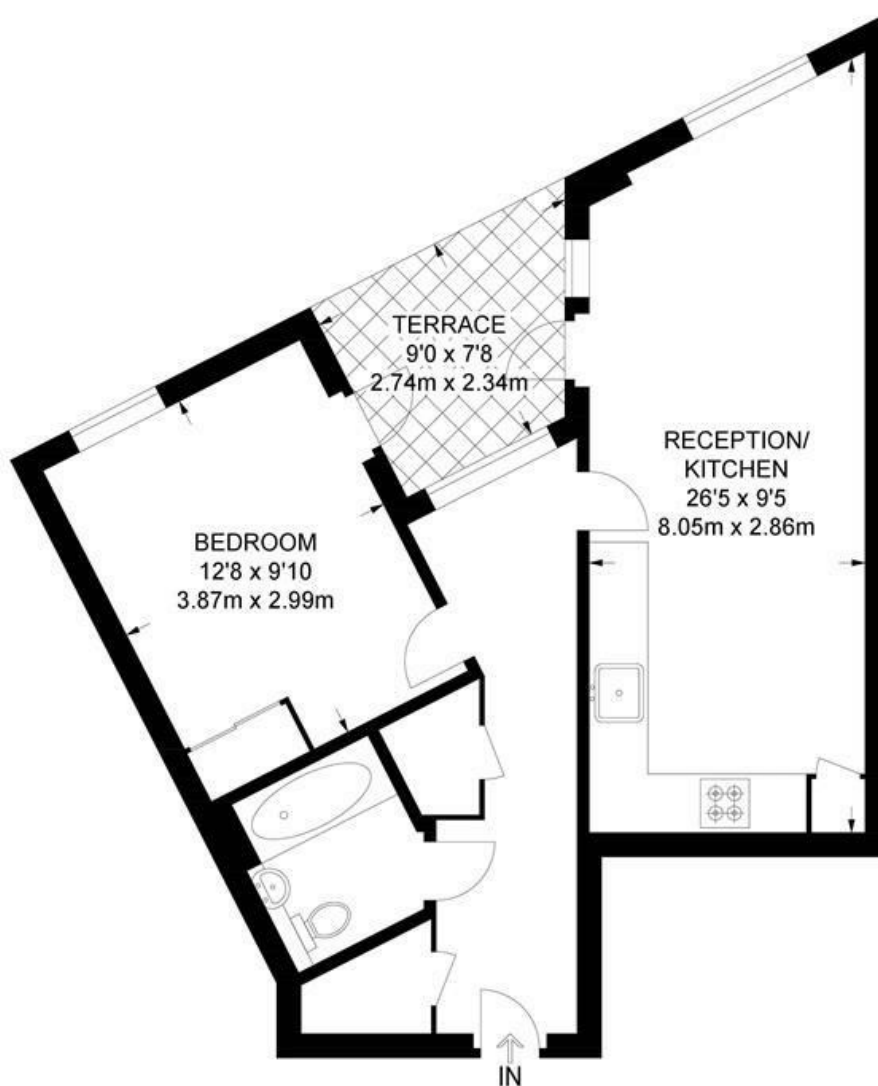


Stockwell Park Walk, Brixton, SW9

## Stockwell Park Walk, SW9

### 1 Bedroom Flat

APPROXIMATE GROSS INTERNAL AREA: 517 SQ FT / 48 SQ M



SIXTH FLOOR



While we try our very best, floor plans are produced as a guide only and we take no responsibility for the precise accuracy with which any property is represented.



Stockwell Park Walk, Brixton, SW9

