

**Morrish Road, Brixton, SW2**

1 bedroom flat to let

**£320 Per Week**

Furnished

## Property Details

Keating Estates are proud to offer this wonderful one bedroom top floor flat located in Brixton. Living in Brixton you can spend your weekends at the Brixton farmers market picking up fresh produce for the week ahead, or kicking a ball around at the infamous Brockwell Park. With so much to offer, Brixton is the place to live. A single train journey links you to the city in minutes. The flat has a separate modern kitchen, a spacious reception room a double bedroom and a bathroom.

## Features

- Light and airy
- One bed
- Spacious reception
- Close to Transport links
- Close to Brockwell Park

Council tax band B      EPC rating D (63)



Morrish Road, Brixton, SW2

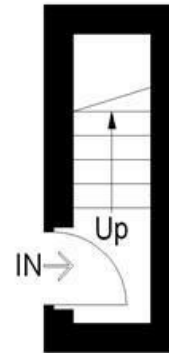
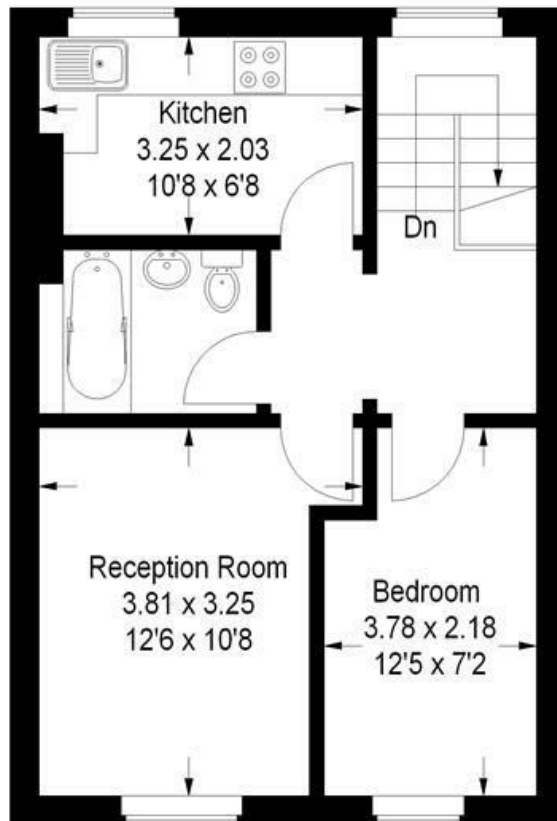
## Morrish Road, SW2

Approximate Gross Internal Area

First Floor = 2.6 sq m / 28 sq ft

Second Floor = 40.4 sq m / 435 sq ft

Total = 43.0 sq m / 463 sq ft



First Floor

## Second Floor

This plan is for layout guidance only. Not drawn to scale unless stated. Windows and door openings are approximate. Whilst every care is taken in the preparation of this plan, please check all dimensions, shapes and compass bearings before making any decisions reliant upon them. (ID201922)



Morrish Road, Brixton, SW2

