

**Shakespeare Road, Herne Hill, SE24**

**£449,950**

2 bedroom flat for sale

## Property Details

A well-appointed two bedroom flat, on the upper ground floor of a Victorian converted house. Shakespeare Road is located in Poets' Corner, equidistant to both Brixton and Herne Hill, with Brockwell Park at the end of the road. The property comprises an open plan kitchen/reception room, two double bedrooms and a modern bathroom. Herne Hill station is a six minute walk with access to Canary Wharf in thirty-eight minutes and Victoria within seventeen minutes, door to door. The restaurants within the lauded Brixton Village and Brixton Station are an eleven minute stroll.

## Features

- Victorian
- Characterful features
- Sought after location
- Close to Brockwell Park

Council tax band C    EPC rating C (69)







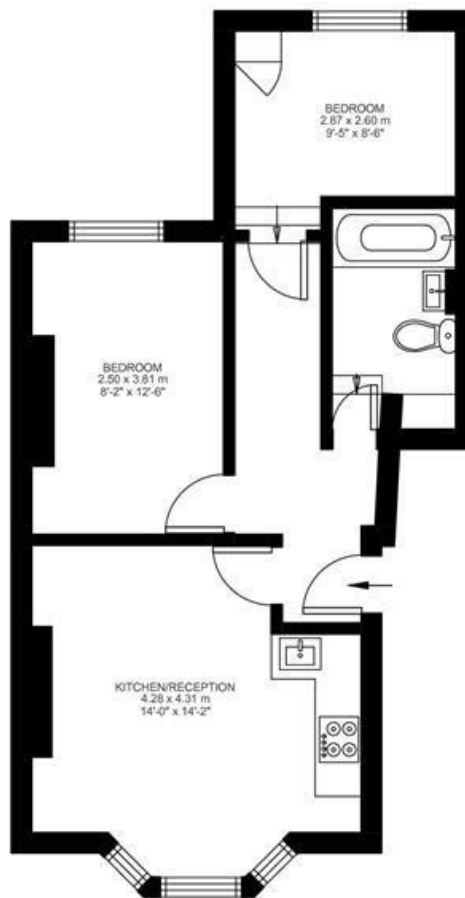
## Shakespeare Road

### 2 Bed flat

Approx internal area:

**491 sqft 46 sqm**

While we do try our very best, floor plans are produced as a guide only and we take no responsibility for the precise accuracy with which any property is represented



Ground Floor





Shakespeare Road, Herne Hill, SE24

