

Brixton Road, Brixton, SW9

2 bedroom flat to let

£520 Per Week

Furnished

Property Details

Presenting this stunning, sizable two bedroom flat with access to a communal terrace. The property offers a separate reception and eat-in kitchen diner, a luxury bathroom and two substantial double bedrooms. The secure gated entrance that leads to a spacious roof garden allows you to relax whilst being a short walk from vibrant Brixton. The tube is only two minutes away, the famous Ritzy Cinema, POP Brixton, Windrush Square and Brixton Village are a minutes' walk and the green open spaces of Brockwell Park are also within walking distance.

Features

- Characterful features
- Central location
- Close to transport links
- Roof garden
- Separate kitchen & dining

Council tax band B EPC rating D (55)



Brixton Road, Brixton, SW9



2 Bed Flat

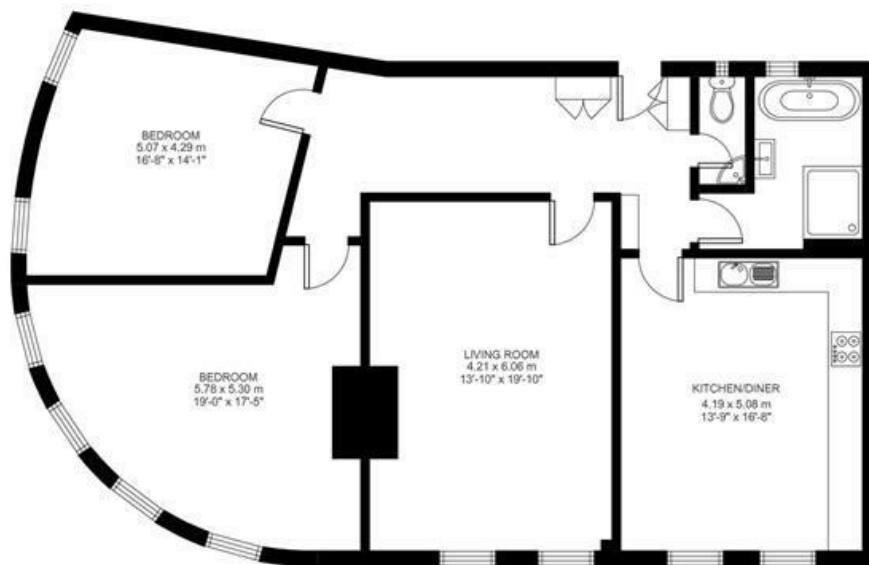
Approx internal area:

1253 sqft 116 sqm

While we do try our very best, floor plans are produced as a guide only and we take no responsibility for the precise accuracy with which any property is represented

Brixton Road

Second Floor



Brixton Road, Brixton, SW9

