



Smedley Street, Stockwell, SW8

3 bedroom flat to let

£715 Per Week

Furnished

Property Details

A three-bedroom flat in a modern development finished to an excellent standard throughout. The property comprises of three double bedrooms, a modern open plan kitchen/reception room, and a modern bathroom all of which are decorated in a tasteful manner. There is also a shared garden for you to enjoy. Smedley Street is located within 8 minutes of Wandsworth Road train station and has the added benefit of being within walking distance to Clapham North tube station and Clapham High street train station as well.

Features

- Garden
- Modern development
- Three Bedrooms
- Spacious Reception
- Two Bathrooms
- Close To Transport Links
- Bright And Airy Throughout

Council tax band E EPC rating B (82)



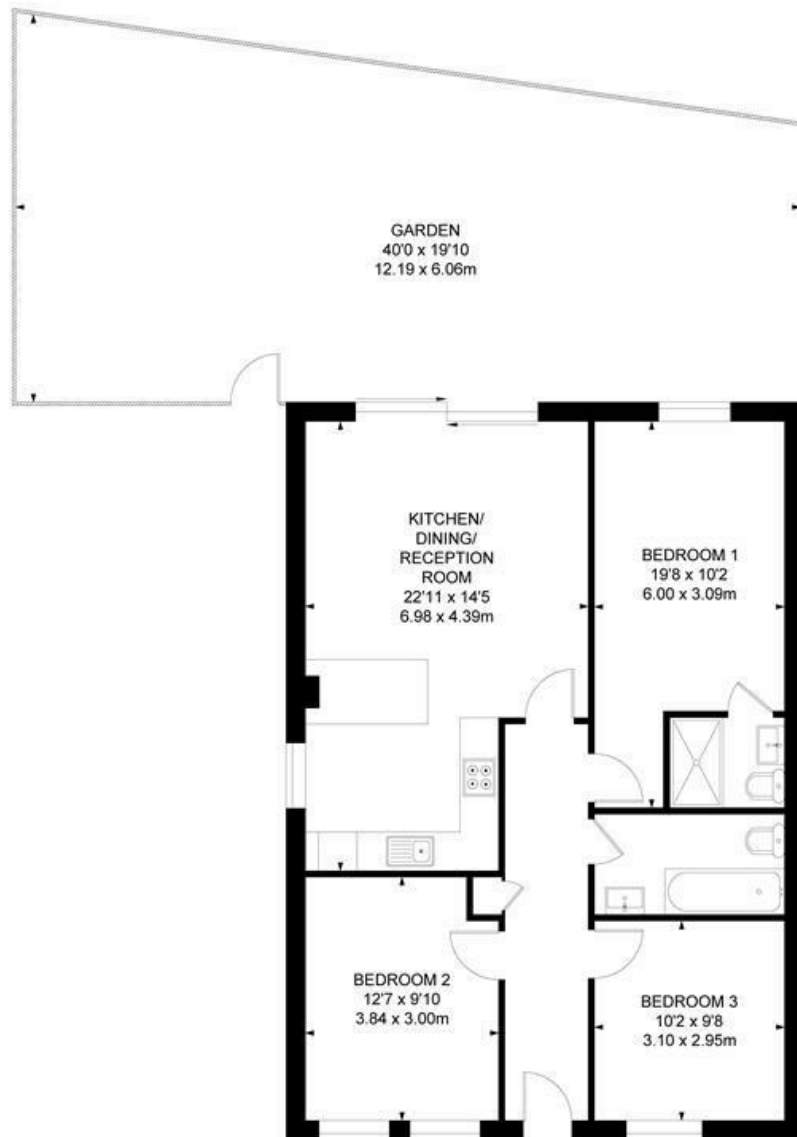
Smedley Street, Stockwell, SW8

Smedley Street, SW4

3 Bedroom Flat

APPROXIMATE GROSS INTERNAL AREA :

870 SQ FT / 80.79 SQ M



GROUND FLOOR



While we try our very best, floor plans are produced as a guide only and we take no responsibility for the precise accuracy with which any property is represented.

Smedley Street, Stockwell, SW8

