



## Hayter Road, Brixton, SW2

3 bedroom flat - conversion for sale

**£730,000**

Share of Freehold

### Property Details

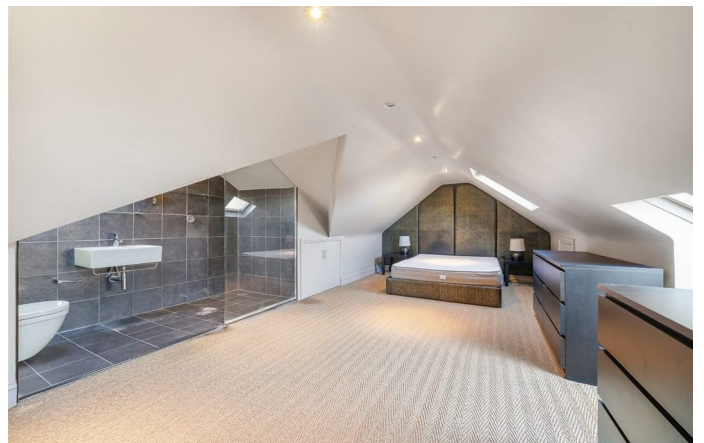
A unique three double bedroom, split-level period apartment rivalling the proportions of many houses, with a lovely rustic style which makes the most of its large rooms. Split over multiple upper floors, the home benefits from an abundance of light, with an open stairwell adding to the airy feel and sense of grandeur. The dine-in kitchen is a charming space in which to cook and host with corniced ceilings and original wooden floorboards, drenched in light from almost floor-to-ceiling French doors ready to be thrown open to allow fresh air to breeze in. The separate reception spans the width of the home, a pleasant spot to unwind with the focal point of a feature fireplace. All three bedrooms enjoy the solace of their own floor, affording privacy. The principal is peacefully atop the home with a walk-in en-suite and skylights boasting views across the rooftops. The further two double bedrooms have fitted wardrobes, with seagrass flooring and leafy views. Completing this beautiful property, the main bathroom is contemporary, featuring a bathtub with overhead rain shower. All in all, a versatile home with a balance of contemporary design and preserved features.

### Features

- Three double bedrooms
- Victorian conversion
- Over 1,350 square feet, rivalling the proportions of many houses
- Preserved character with contemporary touches
- Desirable residential street
- Central Brixton a seven-minute stroll
- Clapham a fifteen-minute walk
- Victoria and Northern Lines
- Share of freehold
- Chain-free

Council tax band D

EPC rating E (54)







Hayter Road, Brixton, SW2

**Hayter Road, SW2**  
**3 Bedroom Flat**

APPROXIMATE GROSS INTERNAL AREA: 1355 SQ FT / 125.9 SQ M



While we try our very best, floor plans are produced as a guide only and we take no responsibility for the precise accuracy with which any property is represented.

Hayter Road, Brixton, SW2

