



Coldharbour Lane, Brixton, SW9

1 bedroom flat - purpose built for sale

£350,000

Leasehold

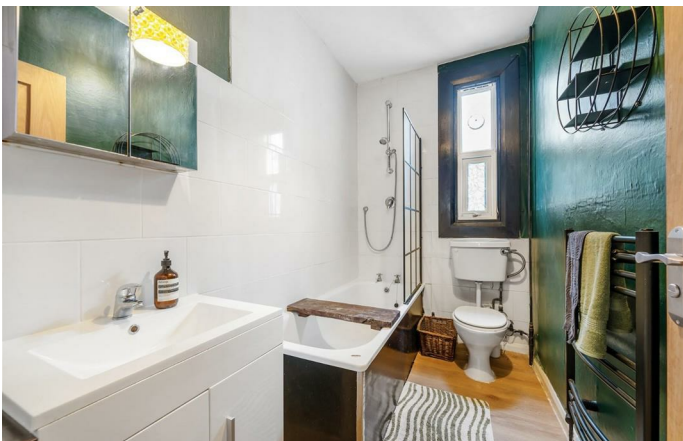
Property Details

A bright one double bedroom flat within a popular Victorian Mansion building in the heart of Brixton. This secure apartment is perfect for anyone who wants to have the wide range of Brixton's amenities within close proximity but would like to remain tucked away quietly in the rear of the building. A bright reception boasts a large bay window with plenty of space to relax, as well as dine at the table. The separate kitchen offers storage within shaker style cabinetry painted pink, equipped with a gas hob plus sink under the window. Subject to the necessary permissions, there is the potential to combine the two rooms should open plan living be preferred. Also featuring a large bay window, the bedroom is a generous double, quietly set away from the social spaces. A spacious bathroom is conveniently set in the centre of this charming property, with a bathtub plus overhead shower. The icing on the cake is the sizeable communal roof terrace offering 360 degree views across Brixton and to the City beyond. Recently refurbished, this exceptional sun trap brings a wholesome sense of community to the building. A new boiler and radiators are currently being installed.

Features

- One double bedroom
- Victorian mansion building
- Communal roof terrace
- Quiet setting located at the back of the building
- Bright and airy throughout
- Bike storage
- Central Brixton on the doorstep
- Three minute walk to Brixton Station
- Brockwell Park in walking distance
- Chain free

Council tax band C EPC rating D (59)



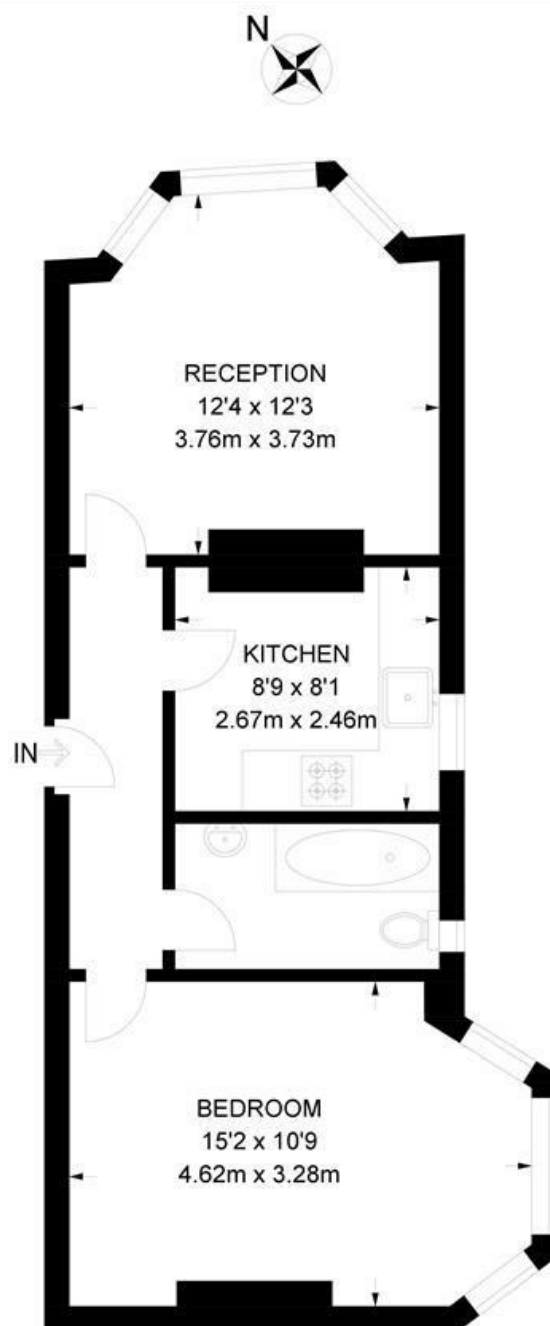


Coldharbour Lane, Brixton, SW9

Coldharbour Lane, SW9

1 Bedroom Flat

APPROXIMATE GROSS INTERNAL AREA: **475 SQ FT / 44 SQ M**



SECOND FLOOR



While we try our very best, floor plans are produced as a guide only and we take no responsibility for the precise accuracy with which any property is represented.

Coldharbour Lane, Brixton, SW9

